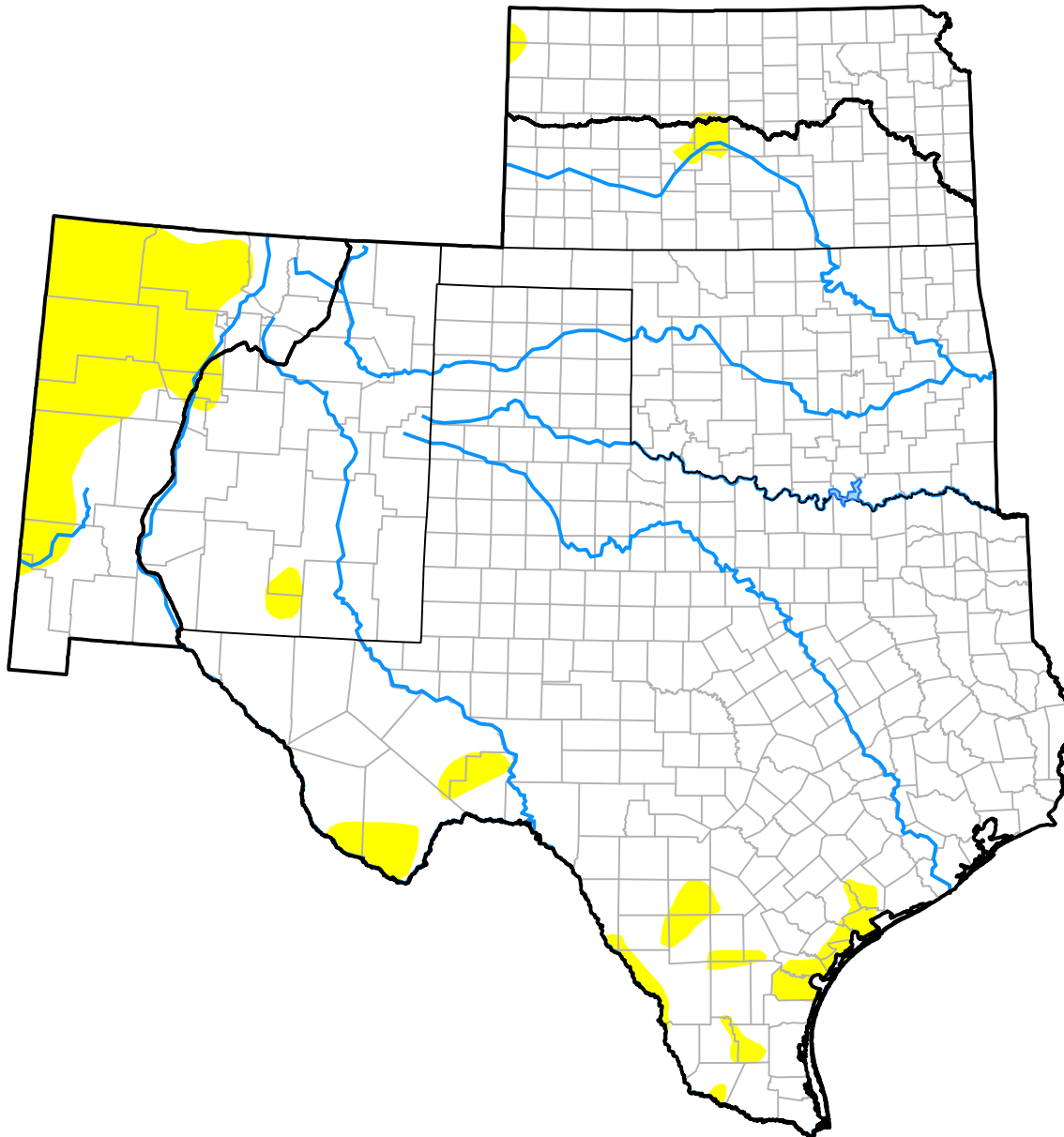


# U.S. Drought Monitor

## Southern Plains RDEWS

**December 29, 2015**  
 (Released Thursday, Dec. 31, 2015)  
 Valid 7 a.m. EST



*Drought Conditions (Percent Area)*

	None	D0-D4	D1-D4	D2-D4	D3-D4	D4
<b>Current</b>	90.39	9.61	0.00	0.00	0.00	0.00
<b>Last Week</b> <i>12-24-2015</i>	90.73	9.27	0.00	0.00	0.00	0.00
<b>3 Months Ago</b> <i>10-01-2015</i>	43.19	56.81	26.94	11.17	3.79	0.00
<b>Start of Calendar Year</b> <i>12-31-2014</i>	27.08	72.92	52.85	28.94	11.11	2.72
<b>Start of Water Year</b> <i>10-01-2015</i>	43.19	56.81	26.94	11.17	3.79	0.00
<b>One Year Ago</b> <i>12-31-2014</i>	27.08	72.92	52.85	28.94	11.11	2.72

***Intensity:***

- None
- D0 Abnormally Dry
- D1 Moderate Drought
- D2 Severe Drought
- D3 Extreme Drought
- D4 Exceptional Drought

*The Drought Monitor focuses on broad-scale conditions. Local conditions may vary. For more information on the Drought Monitor, go to <https://droughtmonitor.unl.edu/About.aspx>*

***Author:***

Chris Fenimore  
 NCEI/NESDIS/NOAA

