

U.S. Drought Monitor

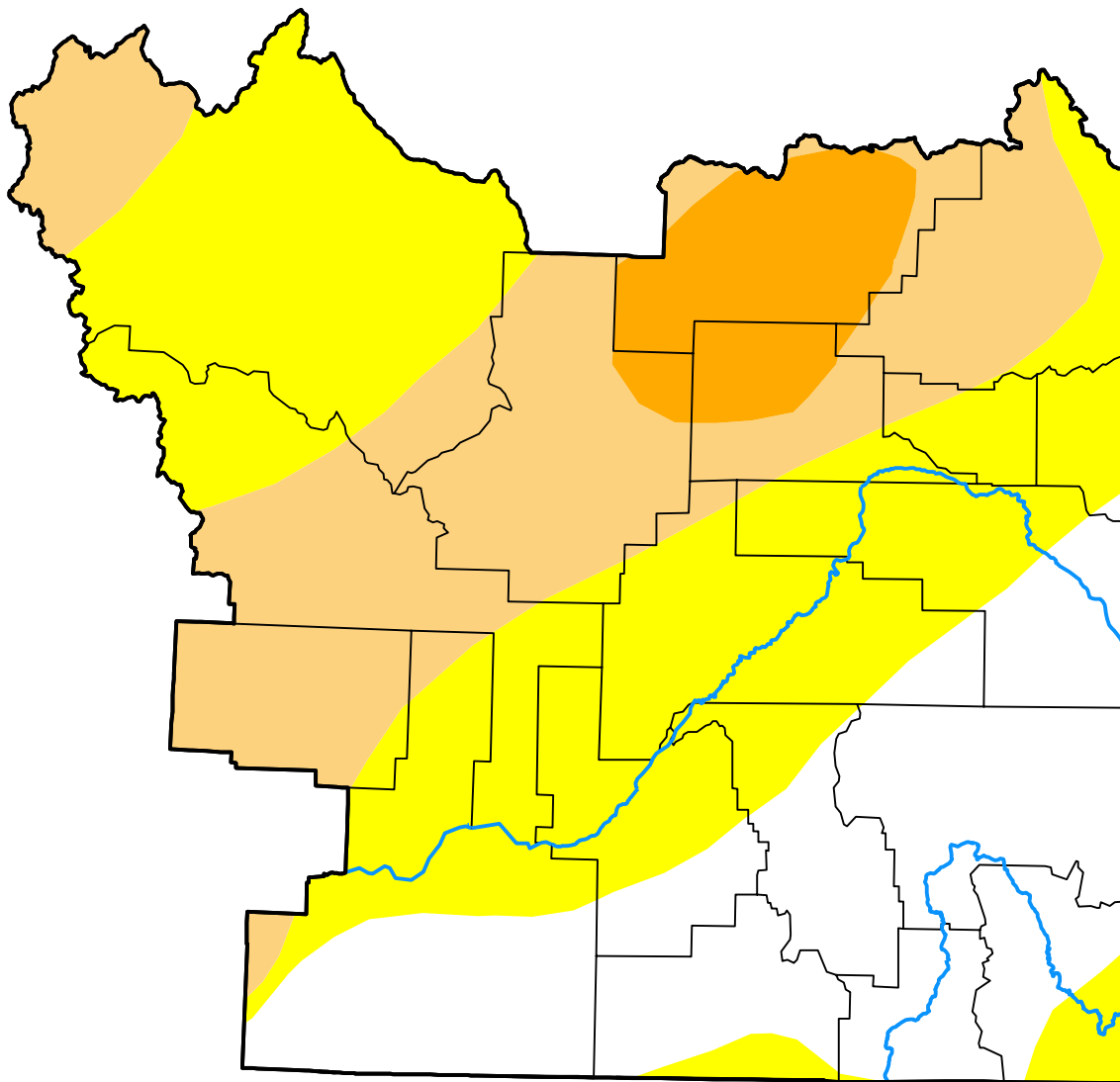
Pocatello, ID WFO

December 29, 2015
 (Released Thursday, Dec. 31, 2015)

Valid 7 a.m. EST

Drought Conditions (Percent Area)

	None	D0-D4	D1-D4	D2-D4	D3-D4	D4
Current	26.38	73.62	32.90	6.52	0.00	0.00
Last Week <i>12-24-2015</i>	26.38	73.62	32.90	6.52	0.00	0.00
3 Months Ago <i>10-01-2015</i>	0.00	100.00	69.22	12.73	0.00	0.00
Start of Calendar Year <i>12-31-2014</i>	27.88	72.12	45.36	15.33	0.84	0.00
Start of Water Year <i>10-01-2015</i>	0.00	100.00	69.22	12.73	0.00	0.00
One Year Ago <i>12-31-2014</i>	27.88	72.12	45.36	15.33	0.84	0.00



Intensity:

- None
- D0 Abnormally Dry
- D1 Moderate Drought
- D2 Severe Drought
- D3 Extreme Drought
- D4 Exceptional Drought

The Drought Monitor focuses on broad-scale conditions. Local conditions may vary. For more information on the Drought Monitor, go to <https://droughtmonitor.unl.edu/About.aspx>

Author:

Chris Fenimore
 NCEI/NESDIS/NOAA



droughtmonitor.unl.edu