

# U.S. Drought Monitor

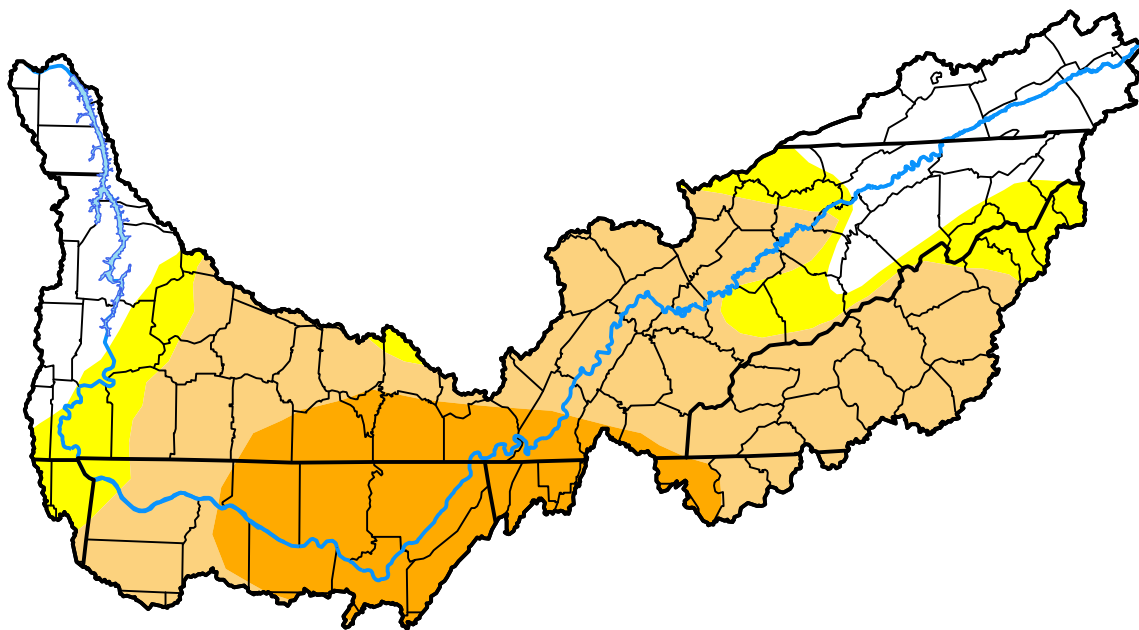
## Tennessee Watershed

**June 14, 2016**  
*(Released Thursday, Jun. 16, 2016)*

Valid 8 a.m. EDT

### Drought Conditions (Percent Area)

	None	D0	D1	D2	D3	D4
<b>Current</b>	23.23	13.89	43.10	19.77	0.00	0.00
<b>Last Week</b> <i>06-09-2016</i>	25.79	15.04	48.42	10.75	0.00	0.00
<b>3 Months Ago</b> <i>03-17-2016</i>	100.00	0.00	0.00	0.00	0.00	0.00
<b>Start of Calendar Year</b> <i>12-31-2015</i>	100.00	0.00	0.00	0.00	0.00	0.00
<b>Start of Water Year</b> <i>10-01-2015</i>	73.40	23.81	2.79	0.00	0.00	0.00
<b>One Year Ago</b> <i>06-18-2015</i>	68.71	19.14	12.15	0.00	0.00	0.00



### Intensity:



The Drought Monitor focuses on broad-scale conditions. Local conditions may vary. For more information on the Drought Monitor, go to <https://droughtmonitor.unl.edu/About.aspx>

### Author:

Chris Fenimore  
 NCEI/NESDIS/NOAA



[droughtmonitor.unl.edu](https://droughtmonitor.unl.edu)