

U.S. Drought Monitor

Tennessee Watershed

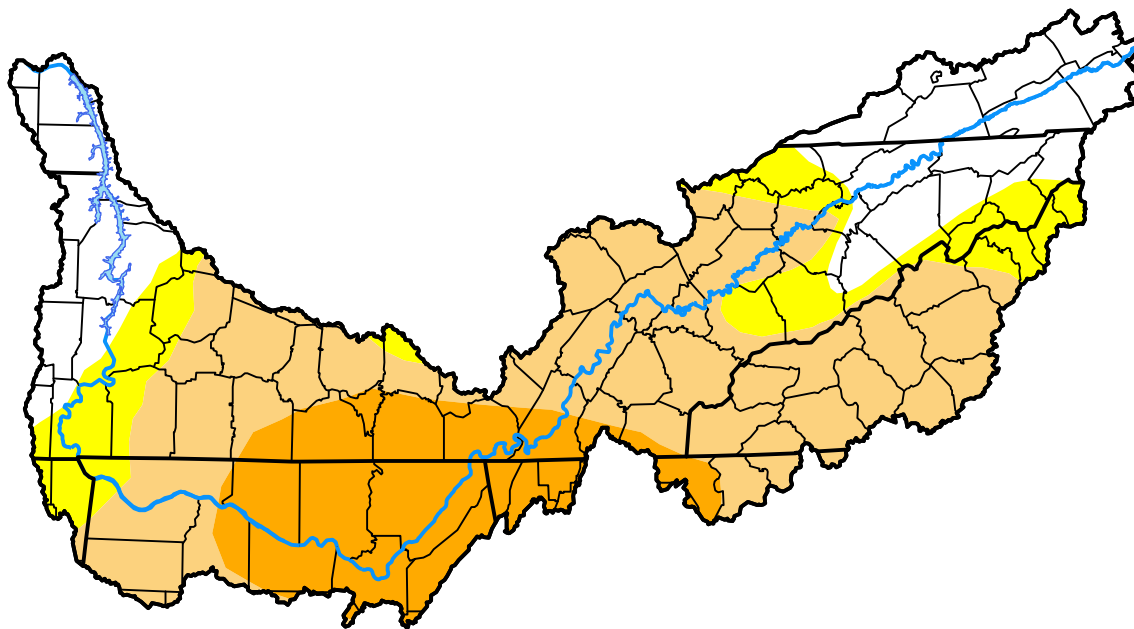
June 14, 2016

(Released Thursday, Jun. 16, 2016)

Valid 8 a.m. EDT

Drought Conditions (Percent Area)

	None	D0-D4	D1-D4	D2-D4	D3-D4	D4
Current	23.23	76.77	62.88	19.77	0.00	0.00
Last Week <i>06-09-2016</i>	25.79	74.21	59.17	10.75	0.00	0.00
3 Months Ago <i>03-17-2016</i>	100.00	0.00	0.00	0.00	0.00	0.00
Start of Calendar Year <i>12-31-2015</i>	100.00	0.00	0.00	0.00	0.00	0.00
Start of Water Year <i>10-01-2015</i>	73.40	26.60	2.79	0.00	0.00	0.00
One Year Ago <i>06-18-2015</i>	68.71	31.29	12.15	0.00	0.00	0.00



Intensity:



The Drought Monitor focuses on broad-scale conditions. Local conditions may vary. For more information on the Drought Monitor, go to <https://droughtmonitor.unl.edu/About.aspx>

Author:

Chris Fenimore
NCEI/NESDIS/NOAA



droughtmonitor.unl.edu