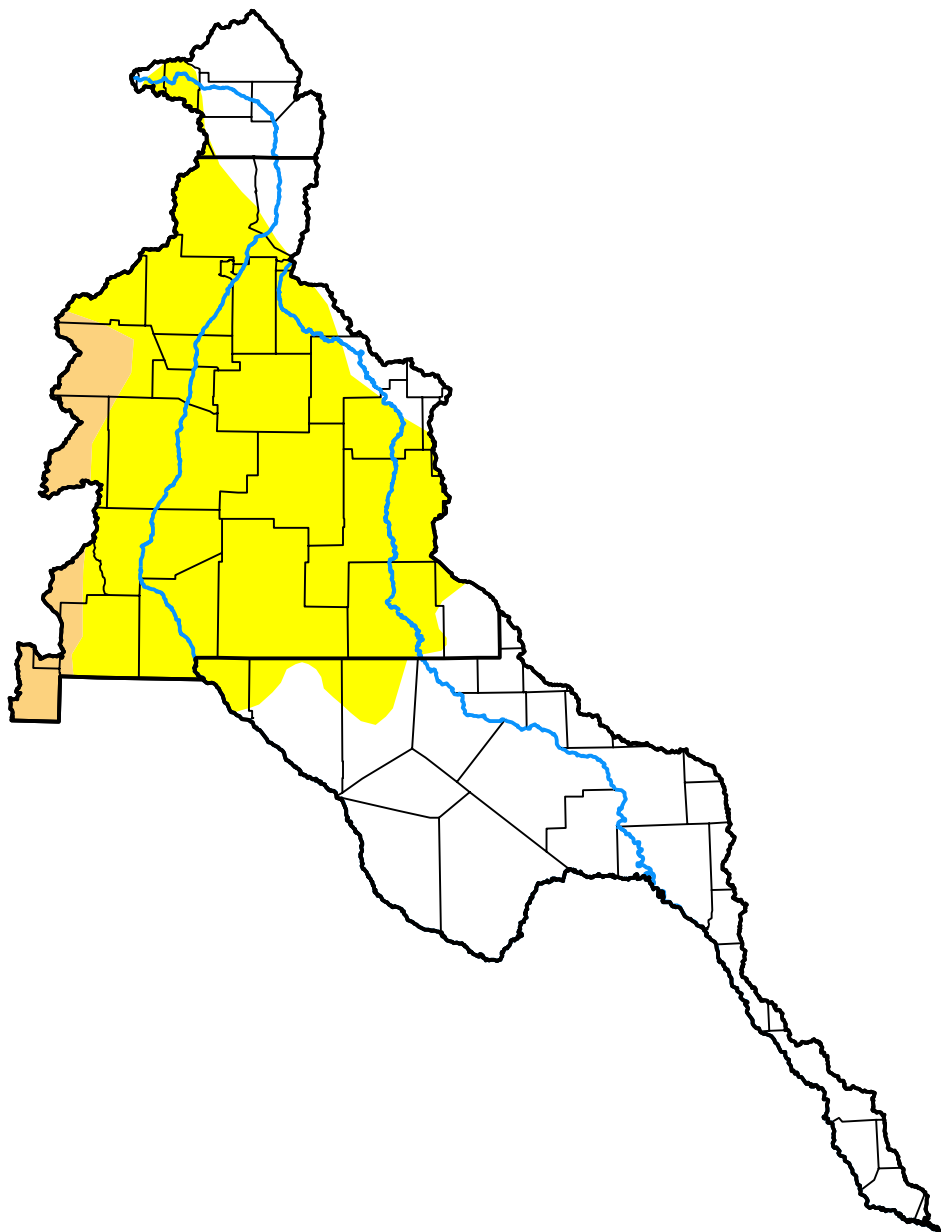


U.S. Drought Monitor

Rio Grande Watershed

June 14, 2016
 (Released Thursday, Jun. 16, 2016)
 Valid 8 a.m. EDT



Drought Conditions (Percent Area)

	None	D0	D1	D2	D3	D4
Current	44.77	50.17	5.06	0.00	0.00	0.00
Last Week <i>06-09-2016</i>	44.77	32.23	23.00	0.00	0.00	0.00
3 Months Ago <i>03-17-2016</i>	68.61	29.86	1.53	0.00	0.00	0.00
Start of Calendar Year <i>12-31-2015</i>	85.78	14.22	0.00	0.00	0.00	0.00
Start of Water Year <i>10-01-2015</i>	59.44	35.64	4.92	0.00	0.00	0.00
One Year Ago <i>06-18-2015</i>	68.49	17.32	14.10	0.09	0.00	0.00

Intensity:

- None
- D0 Abnormally Dry
- D1 Moderate Drought
- D2 Severe Drought
- D3 Extreme Drought
- D4 Exceptional Drought

The Drought Monitor focuses on broad-scale conditions. Local conditions may vary. For more information on the Drought Monitor, go to <https://droughtmonitor.unl.edu/About.aspx>

Author:

Chris Fenimore
 NCEI/NESDIS/NOAA

