

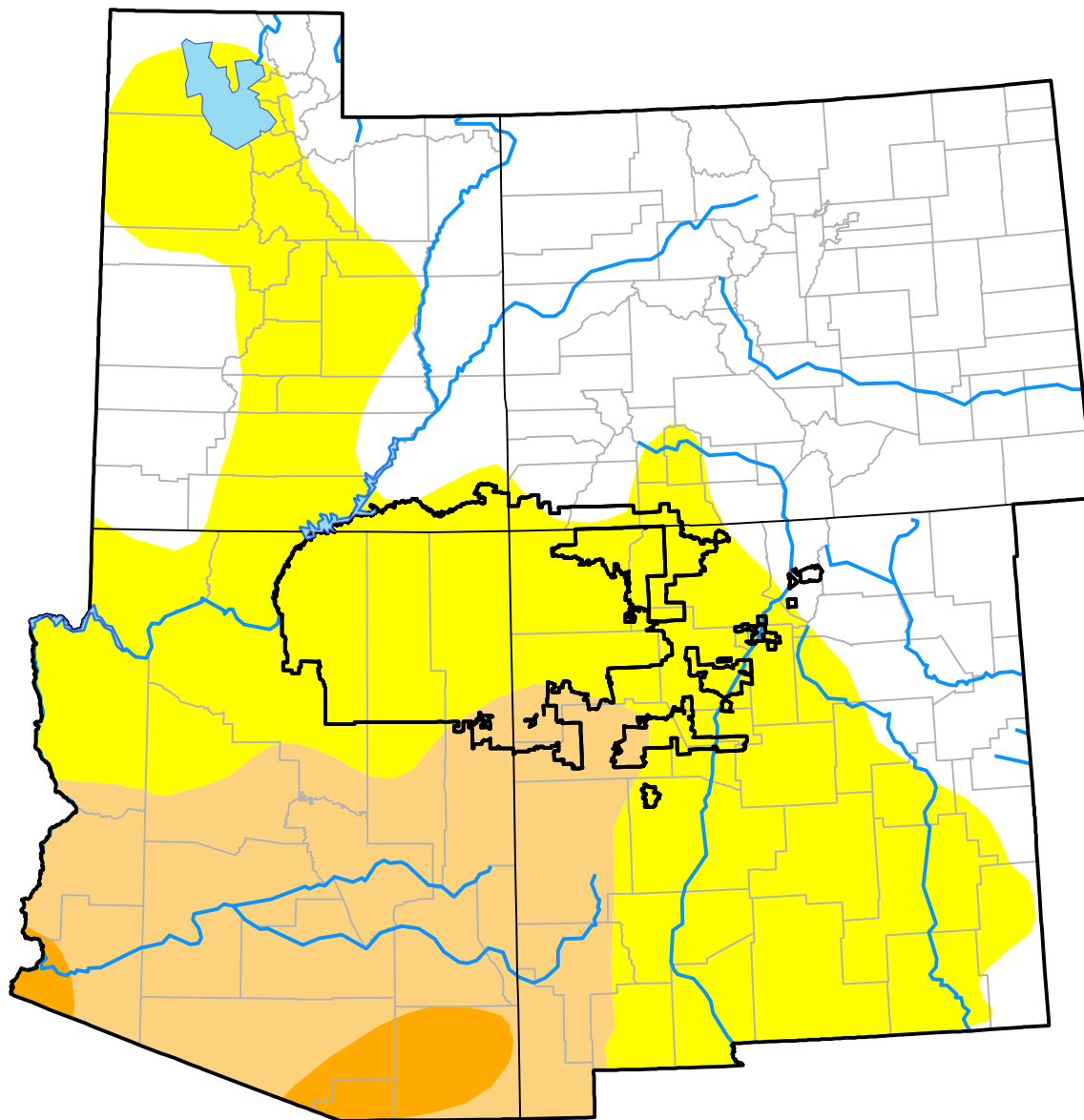
Corners RDEWS and Surrounding Areas

(Released Thursday, Jun. 16, 2016)

Valid 8 a.m. EDT

Drought Conditions (Percent Area)

	None	D0-D4	D1-D4	D2-D4	D3-D4	D4
Current	40.82	59.18	20.43	2.15	0.00	0.00
Last Week <i>06-09-2016</i>	40.82	59.18	26.08	2.15	0.00	0.00
3 Months Ago <i>03-17-2016</i>	42.20	57.80	13.87	2.67	0.00	0.00
Start of Calendar Year <i>12-31-2015</i>	51.56	48.44	18.69	4.81	0.00	0.00
Start of Water Year <i>10-01-2015</i>	38.97	61.03	31.68	6.24	0.00	0.00
One Year Ago <i>06-18-2015</i>	36.20	63.80	43.27	13.92	0.00	0.00



Intensity:

- None
- D0 Abnormally Dry
- D1 Moderate Drought
- D2 Severe Drought
- D3 Extreme Drought
- D4 Exceptional Drought

The Drought Monitor focuses on broad-scale conditions. Local conditions may vary. For more information on the Drought Monitor, go to <https://droughtmonitor.unl.edu/About.aspx>

Author:

Chris Fenimore
NCEI/NESDIS/NOAA

