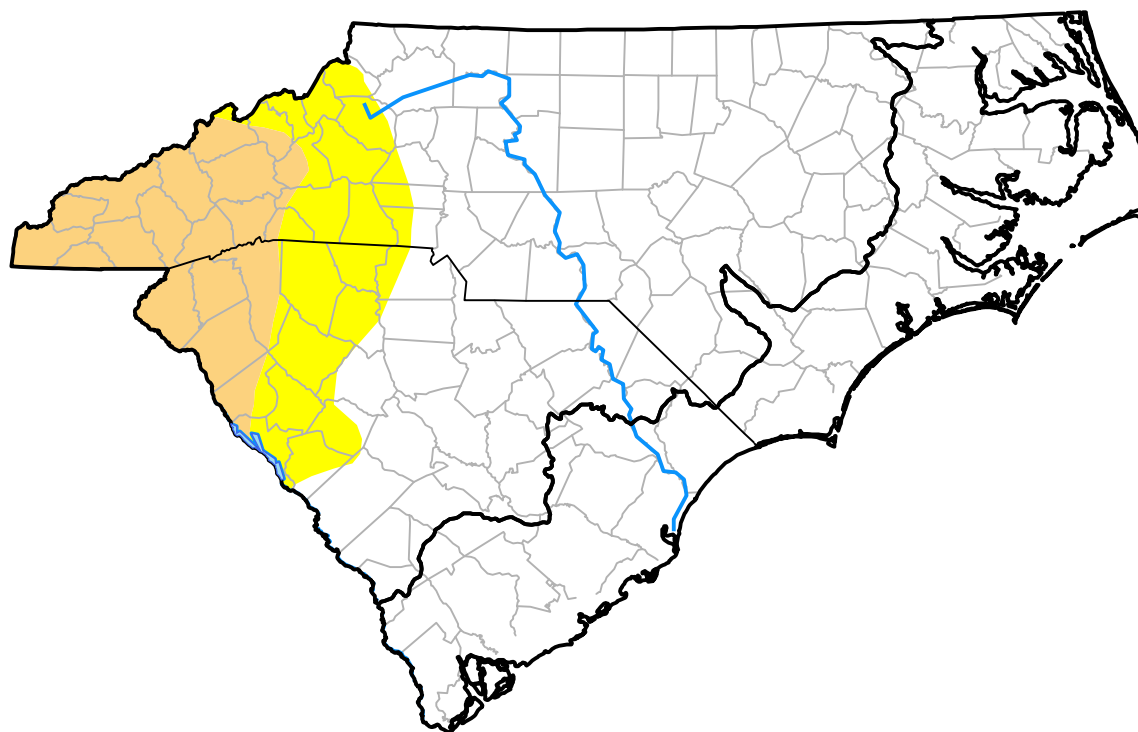


U.S. Drought Monitor

Coastal Carolinas RDEWS

June 14, 2016
 (Released Thursday, Jun. 16, 2016)
 Valid 8 a.m. EDT



Drought Conditions (Percent Area)

	None	D0-D4	D1-D4	D2-D4	D3-D4	D4
Current	100.00	0.00	0.00	0.00	0.00	0.00
Last Week <i>06-09-2016</i>	100.00	0.00	0.00	0.00	0.00	0.00
3 Months Ago <i>03-17-2016</i>	99.50	0.50	0.00	0.00	0.00	0.00
Start of Calendar Year <i>12-31-2015</i>	99.36	0.64	0.00	0.00	0.00	0.00
Start of Water Year <i>10-01-2015</i>	75.74	24.26	7.44	2.10	0.00	0.00
One Year Ago <i>06-18-2015</i>	89.69	10.31	0.00	0.00	0.00	0.00

Intensity:



The Drought Monitor focuses on broad-scale conditions. Local conditions may vary. For more information on the Drought Monitor, go to <https://droughtmonitor.unl.edu/About.aspx>

Author:

Chris Fenimore
 NCEI/NESDIS/NOAA



droughtmonitor.unl.edu