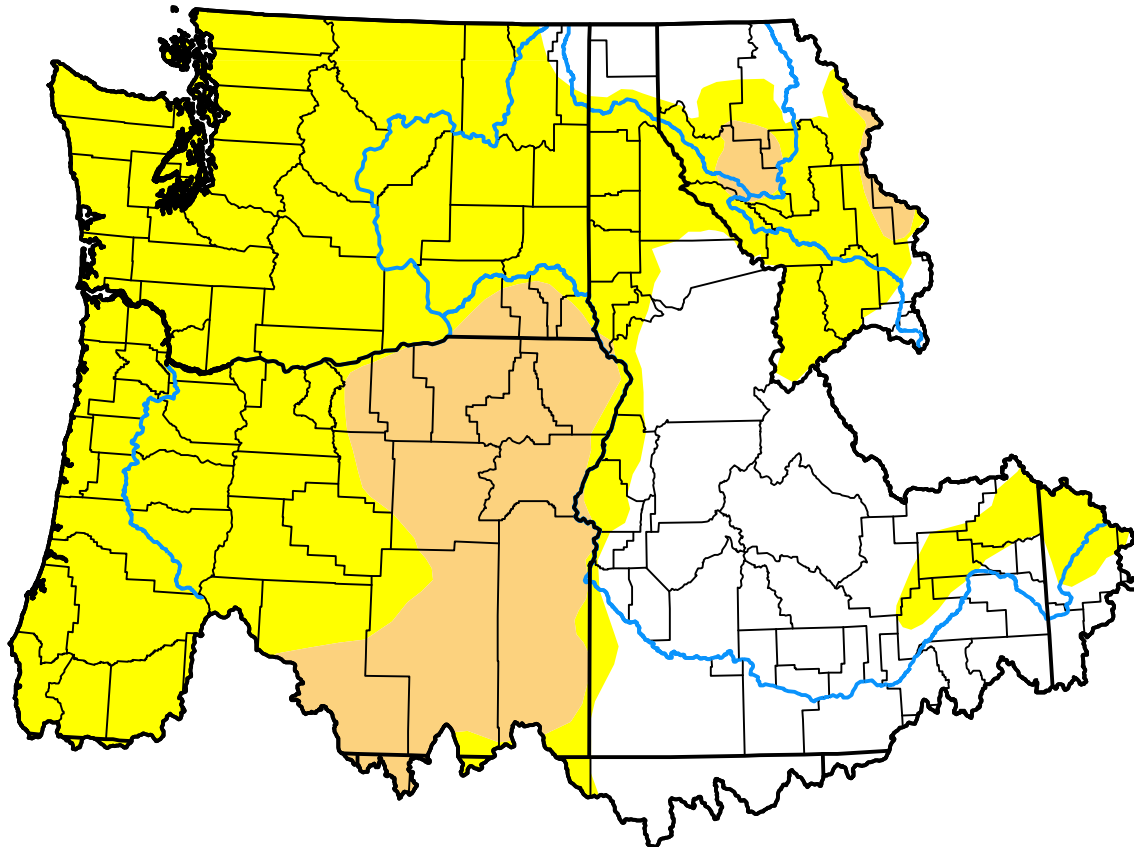


U.S. Drought Monitor Northwest RFC

June 14, 2016
(Released Thursday, Jun. 16, 2016)
Valid 8 a.m. EDT



Drought Conditions (Percent Area)

	None	D0	D1	D2	D3	D4
Current	29.01	54.24	16.74	0.00	0.00	0.00
Last Week <i>06-09-2016</i>	34.99	54.53	10.48	0.00	0.00	0.00
3 Months Ago <i>03-17-2016</i>	42.04	37.55	13.19	7.22	0.00	0.00
Start of Calendar Year <i>12-31-2015</i>	24.36	13.47	23.84	24.00	14.33	0.00
Start of Water Year <i>10-01-2015</i>	0.03	5.88	12.16	26.68	55.25	0.00
One Year Ago <i>06-18-2015</i>	2.51	19.22	37.57	28.45	12.26	0.00

Intensity:

- None
- D0 Abnormally Dry
- D1 Moderate Drought
- D2 Severe Drought
- D3 Extreme Drought
- D4 Exceptional Drought

The Drought Monitor focuses on broad-scale conditions. Local conditions may vary. For more information on the Drought Monitor, go to <https://droughtmonitor.unl.edu/About.aspx>

Author:

Chris Fenimore
NCEI/NESDIS/NOAA

