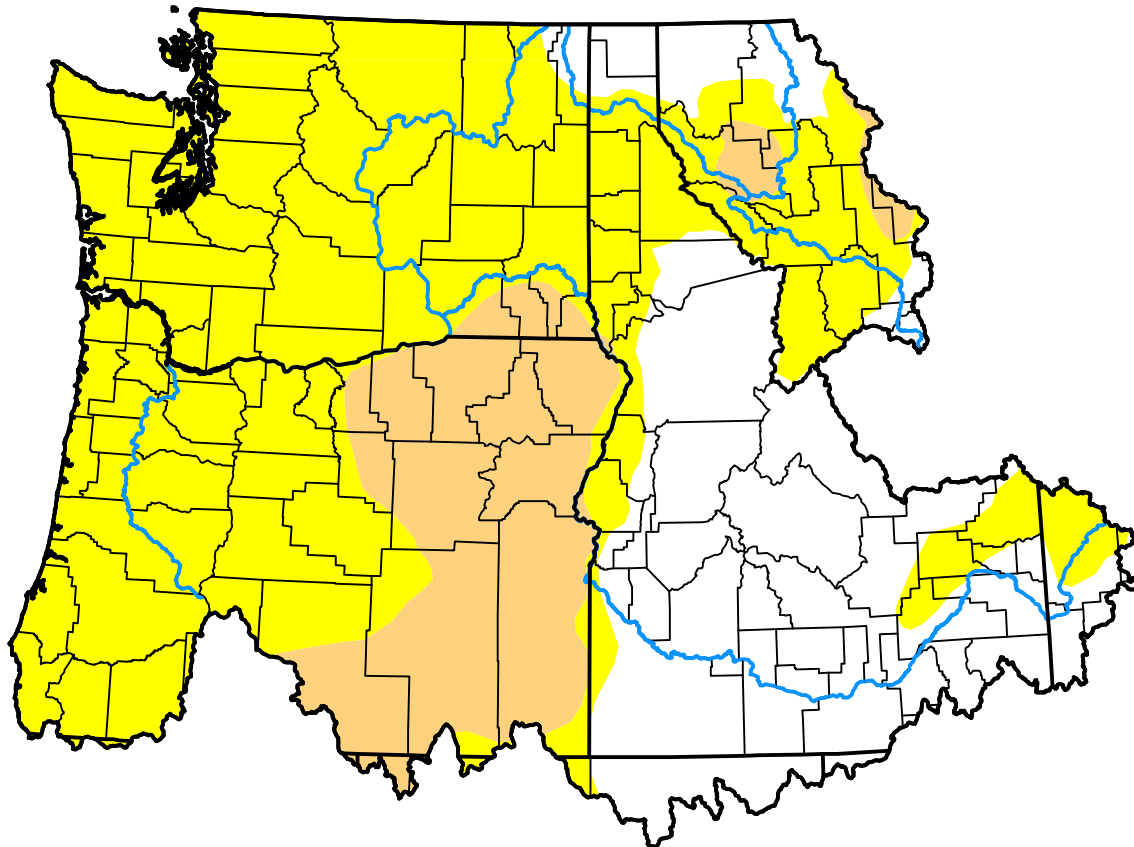


U.S. Drought Monitor Northwest RFC

June 14, 2016
(Released Thursday, Jun. 16, 2016)
Valid 8 a.m. EDT

Drought Conditions (Percent Area)

	None	D0-D4	D1-D4	D2-D4	D3-D4	D4
Current	29.01	70.99	16.74	0.00	0.00	0.00
Last Week <i>06-09-2016</i>	34.99	65.01	10.48	0.00	0.00	0.00
3 Months Ago <i>03-17-2016</i>	42.04	57.96	20.41	7.22	0.00	0.00
Start of Calendar Year <i>12-31-2015</i>	24.36	75.64	62.17	38.33	14.33	0.00
Start of Water Year <i>10-01-2015</i>	0.03	99.97	94.09	81.93	55.25	0.00
One Year Ago <i>06-18-2015</i>	2.51	97.49	78.27	40.71	12.26	0.00



Intensity:



The Drought Monitor focuses on broad-scale conditions. Local conditions may vary. For more information on the Drought Monitor, go to <https://droughtmonitor.unl.edu/About.aspx>

Author:

Chris Fenimore
NCEI/NESDIS/NOAA



droughtmonitor.unl.edu