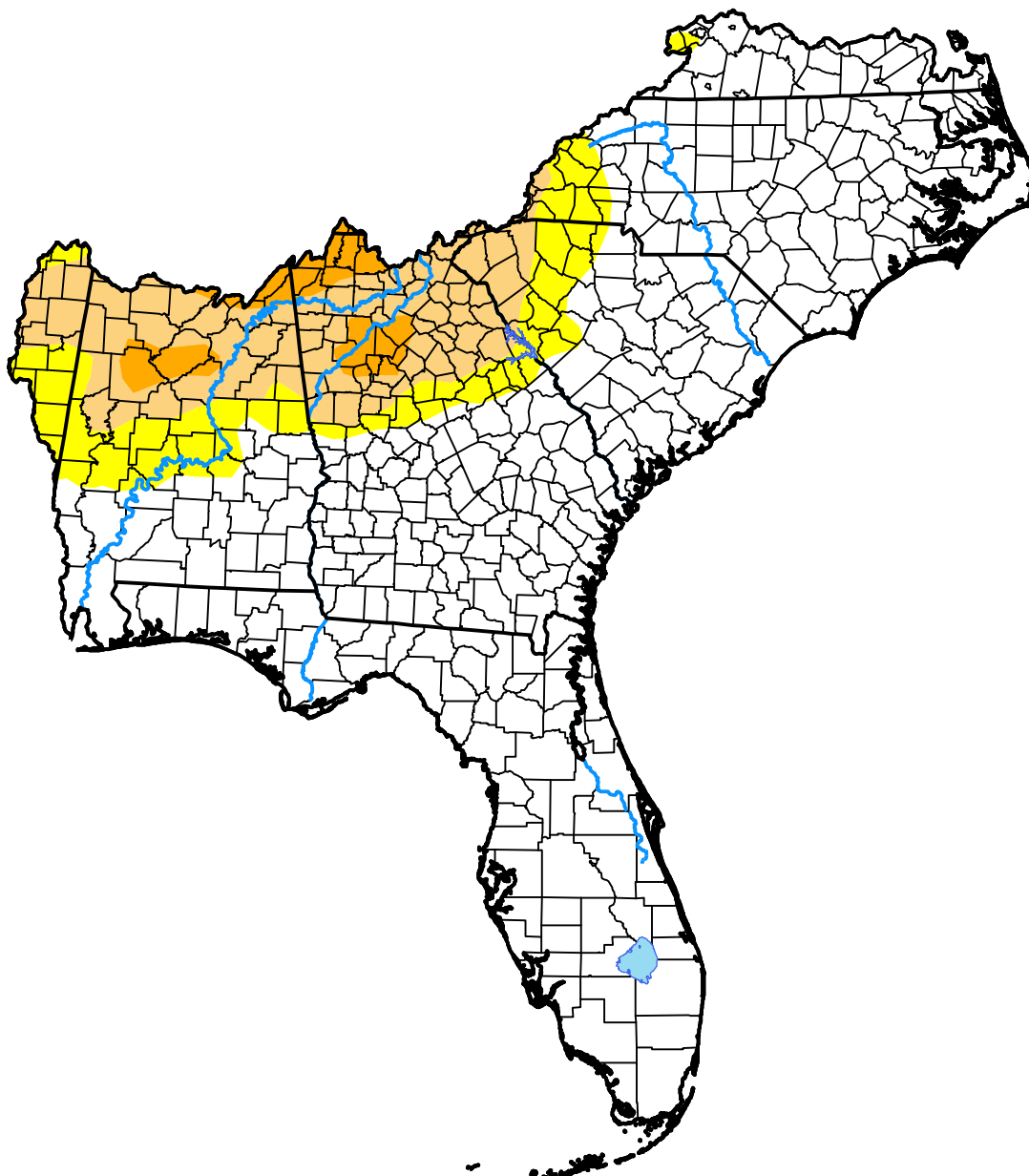


U.S. Drought Monitor Southeast RFC

June 14, 2016
(Released Thursday, Jun. 16, 2016)
Valid 8 a.m. EDT



Drought Conditions (Percent Area)

	None	D0-D4	D1-D4	D2-D4	D3-D4	D4
Current	74.81	25.19	15.76	2.97	0.00	0.00
Last Week <i>06-09-2016</i>	77.59	22.41	12.11	1.09	0.00	0.00
3 Months Ago <i>03-17-2016</i>	90.90	9.10	0.00	0.00	0.00	0.00
Start of Calendar Year <i>12-31-2015</i>	94.27	5.73	0.00	0.00	0.00	0.00
Start of Water Year <i>10-01-2015</i>	53.12	46.88	13.09	2.01	0.00	0.00
One Year Ago <i>06-18-2015</i>	68.45	31.55	4.65	0.29	0.00	0.00

Intensity:



The Drought Monitor focuses on broad-scale conditions. Local conditions may vary. For more information on the Drought Monitor, go to <https://droughtmonitor.unl.edu/About.aspx>

Author:

Chris Fenimore
NCEI/NESDIS/NOAA

