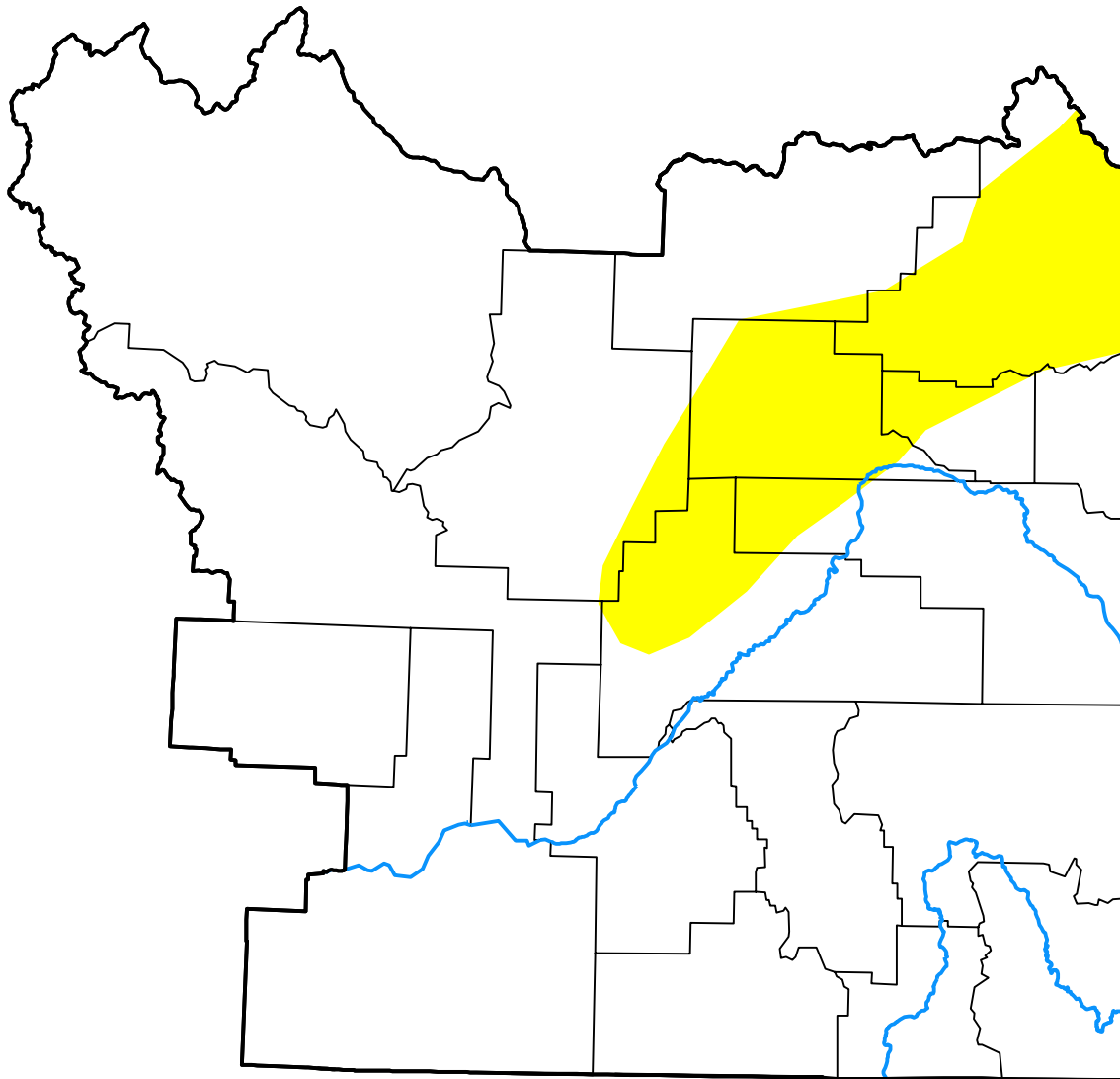


U.S. Drought Monitor

Pocatello, ID WFO

June 14, 2016
 (Released Thursday, Jun. 16, 2016)
 Valid 8 a.m. EDT



Drought Conditions (Percent Area)

	None	D0	D1	D2	D3	D4
Current	87.75	12.25	0.00	0.00	0.00	0.00
Last Week <i>06-09-2016</i>	90.37	9.63	0.00	0.00	0.00	0.00
3 Months Ago <i>03-17-2016</i>	27.80	72.20	0.00	0.00	0.00	0.00
Start of Calendar Year <i>12-31-2015</i>	26.38	40.72	26.38	6.52	0.00	0.00
Start of Water Year <i>10-01-2015</i>	0.00	30.78	56.49	12.73	0.00	0.00
One Year Ago <i>06-18-2015</i>	0.00	46.60	26.97	26.43	0.00	0.00

Intensity:

- None
- D0 Abnormally Dry
- D1 Moderate Drought
- D2 Severe Drought
- D3 Extreme Drought
- D4 Exceptional Drought

The Drought Monitor focuses on broad-scale conditions. Local conditions may vary. For more information on the Drought Monitor, go to <https://droughtmonitor.unl.edu/About.aspx>

Author:

Chris Fenimore
 NCEI/NESDIS/NOAA

