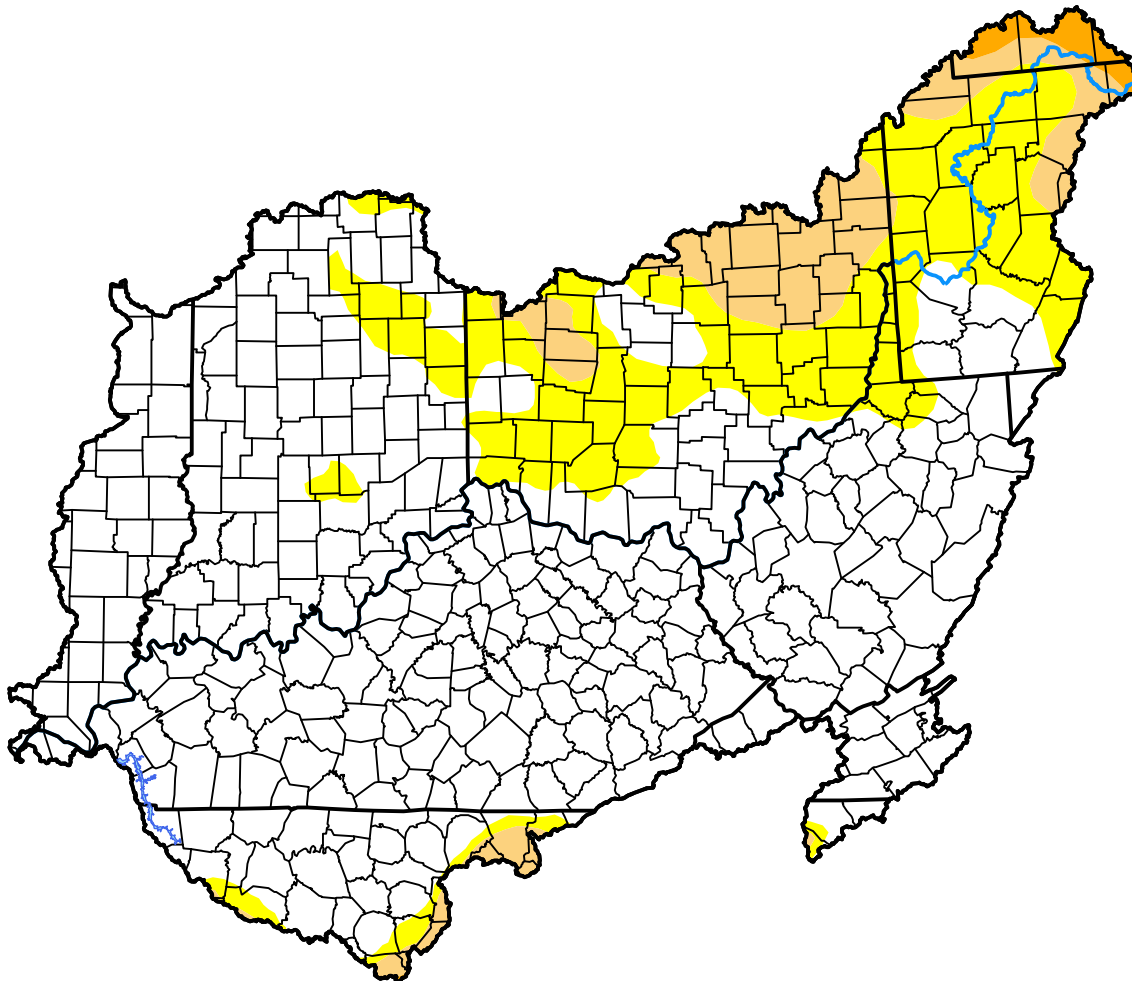


U.S. Drought Monitor Ohio Watershed

July 26, 2016
(Released Thursday, Jul. 28, 2016)
Valid 8 a.m. EDT

Drought Conditions (Percent Area)

	None	D0-D4	D1-D4	D2-D4	D3-D4	D4
Current	74.37	25.63	7.77	0.81	0.00	0.00
Last Week <i>07-21-2016</i>	77.39	22.61	5.87	0.52	0.00	0.00
3 Months Ago <i>04-28-2016</i>	65.44	34.56	5.36	0.00	0.00	0.00
Start of Calendar Year <i>12-31-2015</i>	80.44	19.56	1.76	0.00	0.00	0.00
Start of Water Year <i>10-01-2015</i>	52.32	47.68	2.68	0.00	0.00	0.00
One Year Ago <i>07-30-2015</i>	99.97	0.03	0.00	0.00	0.00	0.00



Intensity:



The Drought Monitor focuses on broad-scale conditions. Local conditions may vary. For more information on the Drought Monitor, go to <https://droughtmonitor.unl.edu/About.aspx>

Author:

Brad Rippey
U.S. Department of Agriculture



droughtmonitor.unl.edu