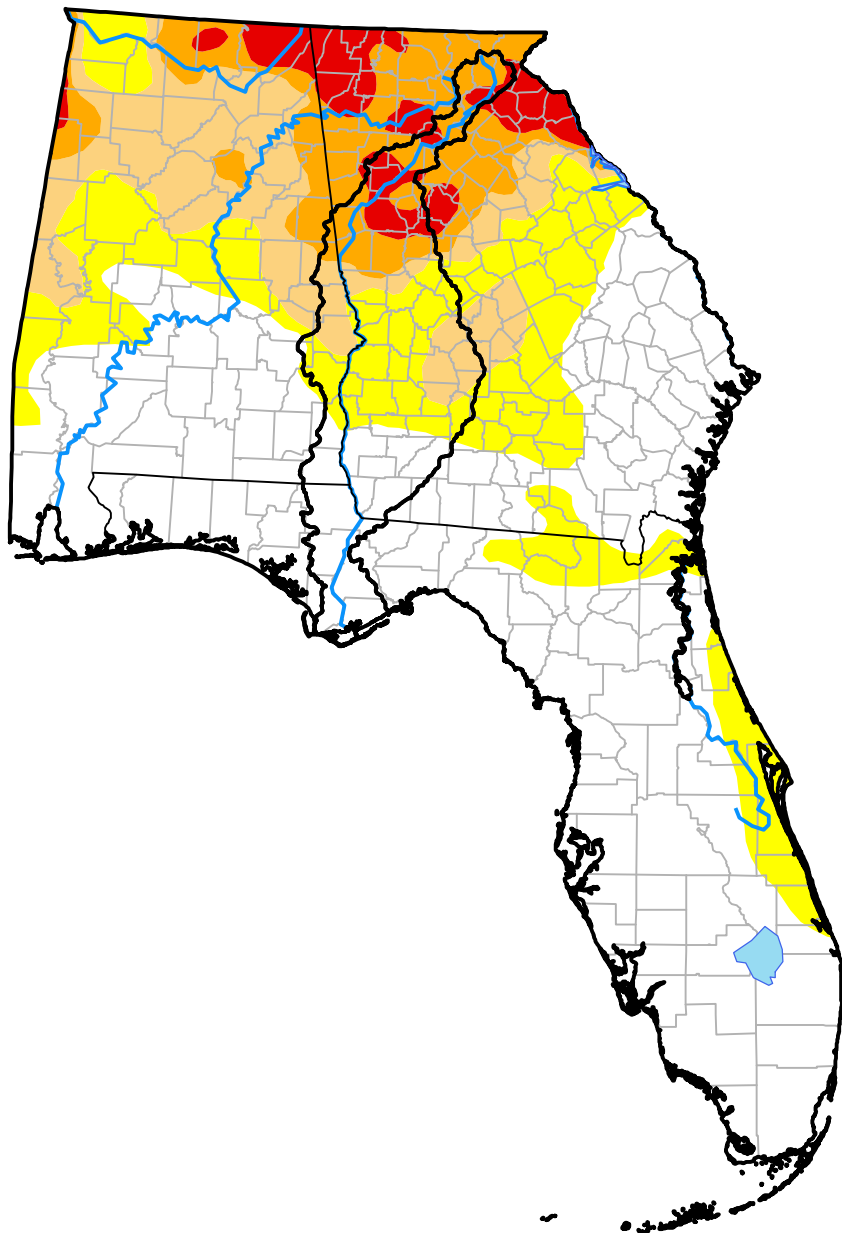


Upper Basin RDEWS and Surrounding Areas

(Released Thursday, Jul. 28, 2016)

7:58 a.m. EDT



Drought Conditions (Percent Area)

	None	D0-D4	D1-D4	D2-D4	D3-D4	D4
Current	53.91	46.09	25.78	13.73	4.59	0.00
Last Week <i>07-21-2016</i>	56.34	43.66	26.09	14.56	4.24	0.00
3 Months Ago <i>04-28-2016</i>	85.97	14.03	2.48	0.00	0.00	0.00
Start of Calendar Year <i>12-31-2015</i>	91.49	8.51	0.00	0.00	0.00	0.00
Start of Water Year <i>10-01-2015</i>	61.81	38.19	9.10	0.42	0.00	0.00
One Year Ago <i>07-30-2015</i>	53.62	46.38	16.77	3.24	0.41	0.00

Intensity:

- None
- D0 Abnormally Dry
- D1 Moderate Drought
- D2 Severe Drought
- D3 Extreme Drought
- D4 Exceptional Drought

The Drought Monitor focuses on broad-scale conditions. Local conditions may vary. For more information on the Drought Monitor, go to <https://droughtmonitor.unl.edu/About.aspx>

Author:

Brad Rippey
U.S. Department of Agriculture

