

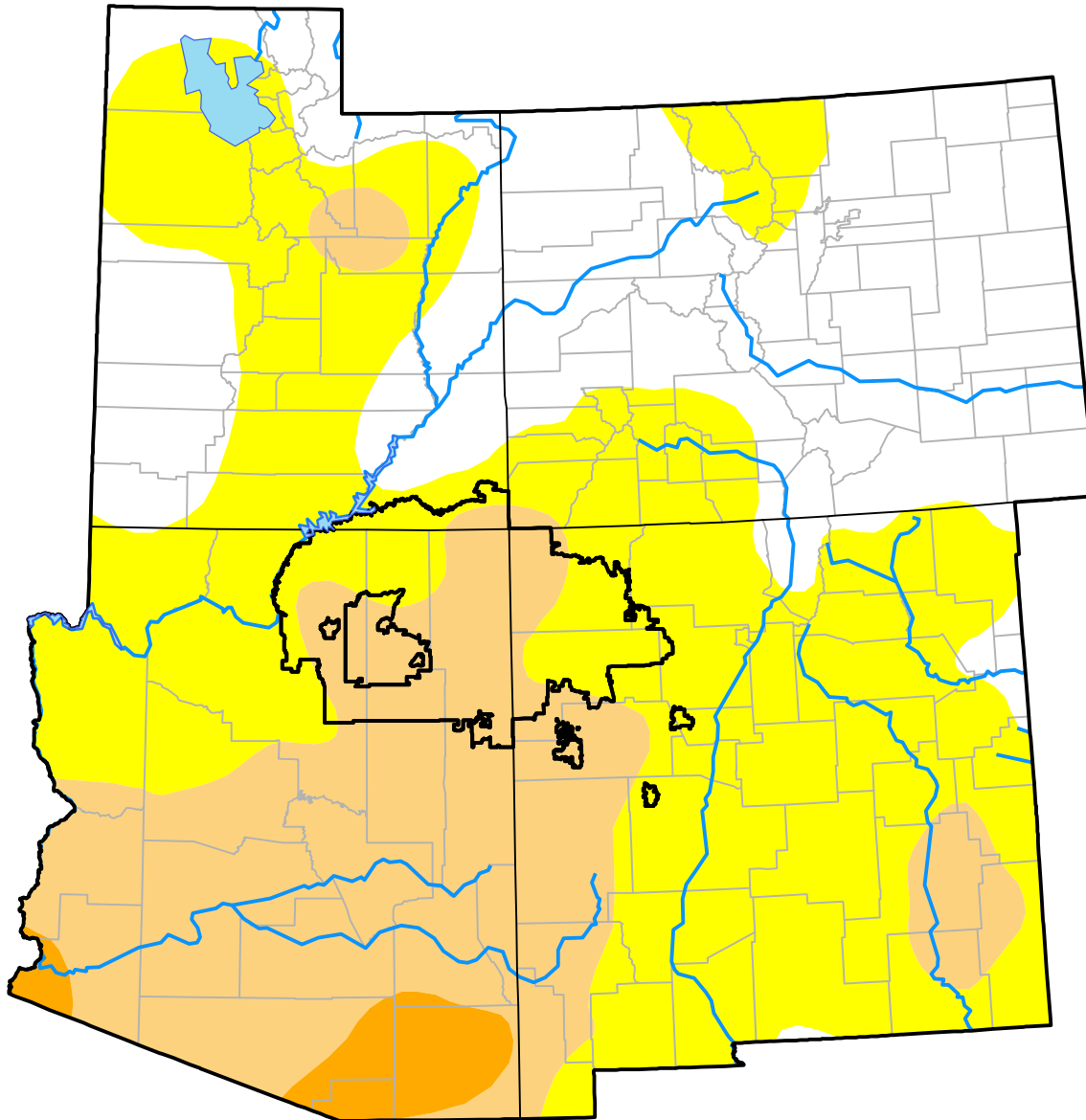
Nebraska RDEWS and Surrounding Areas

(Released Thursday, Jul. 28, 2016)

Valid 8 a.m. EDT

Drought Conditions (Percent Area)

| | None | D0-D4 | D1-D4 | D2-D4 | D3-D4 | D4 |
|--|-------|-------|-------|-------|-------|------|
| Current | 29.92 | 70.08 | 26.47 | 2.34 | 0.00 | 0.00 |
| Last Week <i>07-21-2016</i> | 36.70 | 63.30 | 20.43 | 2.15 | 0.00 | 0.00 |
| 3 Months Ago <i>04-28-2016</i> | 20.15 | 79.85 | 36.93 | 2.87 | 0.00 | 0.00 |
| Start of Calendar Year <i>12-31-2015</i> | 51.56 | 48.44 | 18.69 | 4.81 | 0.00 | 0.00 |
| Start of Water Year <i>10-01-2015</i> | 38.97 | 61.03 | 31.68 | 6.24 | 0.00 | 0.00 |
| One Year Ago <i>07-30-2015</i> | 42.45 | 57.55 | 38.66 | 8.01 | 0.00 | 0.00 |



Intensity:

- None
- D0 Abnormally Dry
- D1 Moderate Drought
- D2 Severe Drought
- D3 Extreme Drought
- D4 Exceptional Drought

The Drought Monitor focuses on broad-scale conditions. Local conditions may vary. For more information on the Drought Monitor, go to <https://droughtmonitor.unl.edu/About.aspx>

Author:

Brad Rippey
U.S. Department of Agriculture

