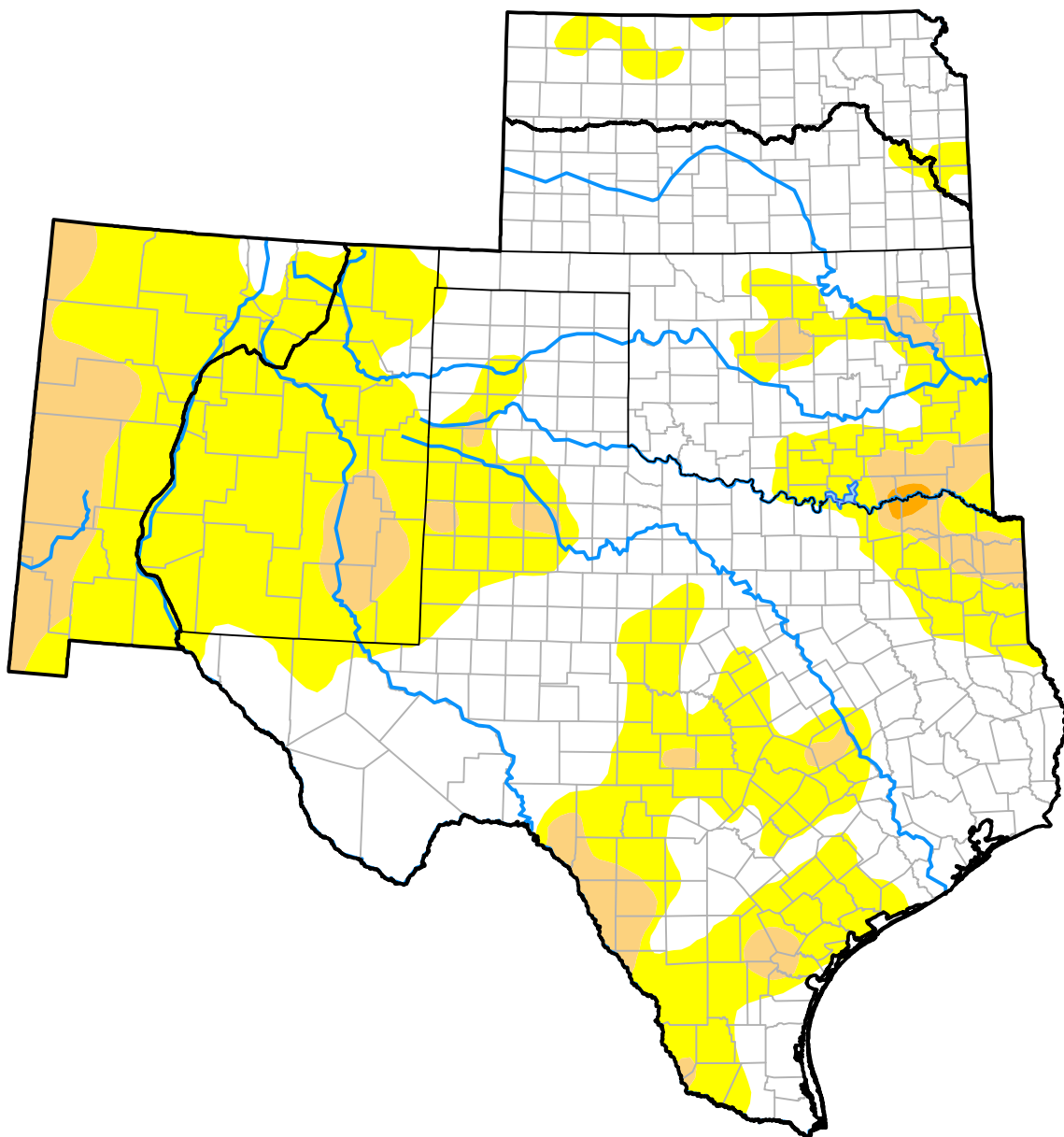


# U.S. Drought Monitor

## Southern Plains RDEWS

**July 26, 2016**  
 (Released Thursday, Jul. 28, 2016)  
 Valid 8 a.m. EDT



*Drought Conditions (Percent Area)*

	None	D0-D4	D1-D4	D2-D4	D3-D4	D4
<b>Current</b>	47.04	52.96	10.67	0.19	0.00	0.00
<b>Last Week</b> <i>07-21-2016</i>	66.60	33.40	6.28	0.00	0.00	0.00
<b>3 Months Ago</b> <i>04-28-2016</i>	59.97	40.03	14.50	0.41	0.00	0.00
<b>Start of Calendar Year</b> <i>12-31-2015</i>	90.39	9.61	0.00	0.00	0.00	0.00
<b>Start of Water Year</b> <i>10-01-2015</i>	43.19	56.81	26.94	11.17	3.79	0.00
<b>One Year Ago</b> <i>07-30-2015</i>	78.67	21.33	5.53	0.07	0.00	0.00

***Intensity:***



*The Drought Monitor focuses on broad-scale conditions. Local conditions may vary. For more information on the Drought Monitor, go to <https://droughtmonitor.unl.edu/About.aspx>*

***Author:***

Brad Rippey  
 U.S. Department of Agriculture

