

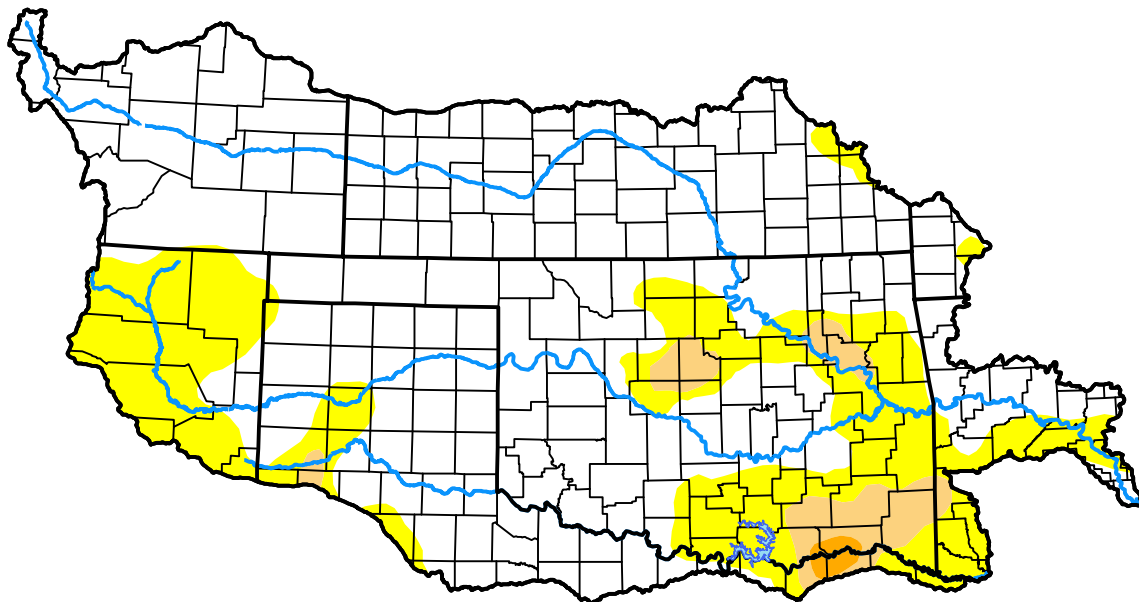
U.S. Drought Monitor

Arkansas Red Basin RFC

July 26, 2016
 (Released Thursday, Jul. 28, 2016)
 Valid 8 a.m. EDT

Drought Conditions (Percent Area)

	None	D0	D1	D2	D3	D4
Current	73.59	22.29	3.72	0.40	0.00	0.00
Last Week <i>07-21-2016</i>	82.90	14.05	3.06	0.00	0.00	0.00
3 Months Ago <i>04-28-2016</i>	41.47	45.76	11.89	0.88	0.00	0.00
Start of Calendar Year <i>12-31-2015</i>	97.52	2.48	0.00	0.00	0.00	0.00
Start of Water Year <i>10-01-2015</i>	68.67	21.02	6.36	3.18	0.78	0.00
One Year Ago <i>07-30-2015</i>	96.39	3.61	0.00	0.00	0.00	0.00



Intensity:



The Drought Monitor focuses on broad-scale conditions. Local conditions may vary. For more information on the Drought Monitor, go to <https://droughtmonitor.unl.edu/About.aspx>

Author:

Brad Rippey
 U.S. Department of Agriculture



droughtmonitor.unl.edu