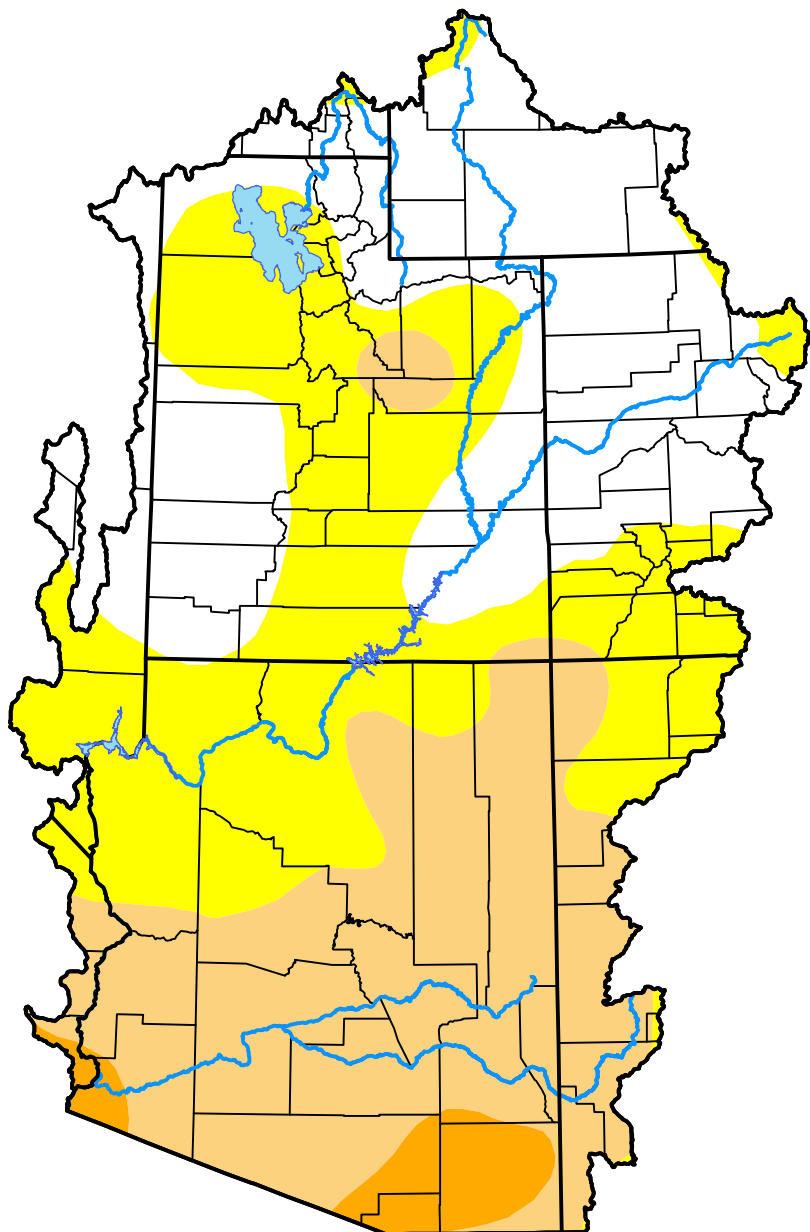


U.S. Drought Monitor

Colorado Basin RFC

July 26, 2016
 (Released Thursday, Jul. 28, 2016)
 Valid 8 a.m. EDT



Drought Conditions (Percent Area)

	None	D0-D4	D1-D4	D2-D4	D3-D4	D4
Current	31.80	68.20	33.95	3.45	0.00	0.00
Last Week <i>07-21-2016</i>	33.80	66.20	27.07	3.17	0.00	0.00
3 Months Ago <i>04-28-2016</i>	16.52	83.48	42.49	4.71	0.00	0.00
Start of Calendar Year <i>12-31-2015</i>	26.59	73.41	30.87	6.95	0.00	0.00
Start of Water Year <i>10-01-2015</i>	24.00	76.00	48.47	9.85	0.00	0.00
One Year Ago <i>07-30-2015</i>	22.33	77.67	56.49	12.33	0.00	0.00

Intensity:



The Drought Monitor focuses on broad-scale conditions. Local conditions may vary. For more information on the Drought Monitor, go to <https://droughtmonitor.unl.edu/About.aspx>

Author:

Brad Rippey
 U.S. Department of Agriculture

