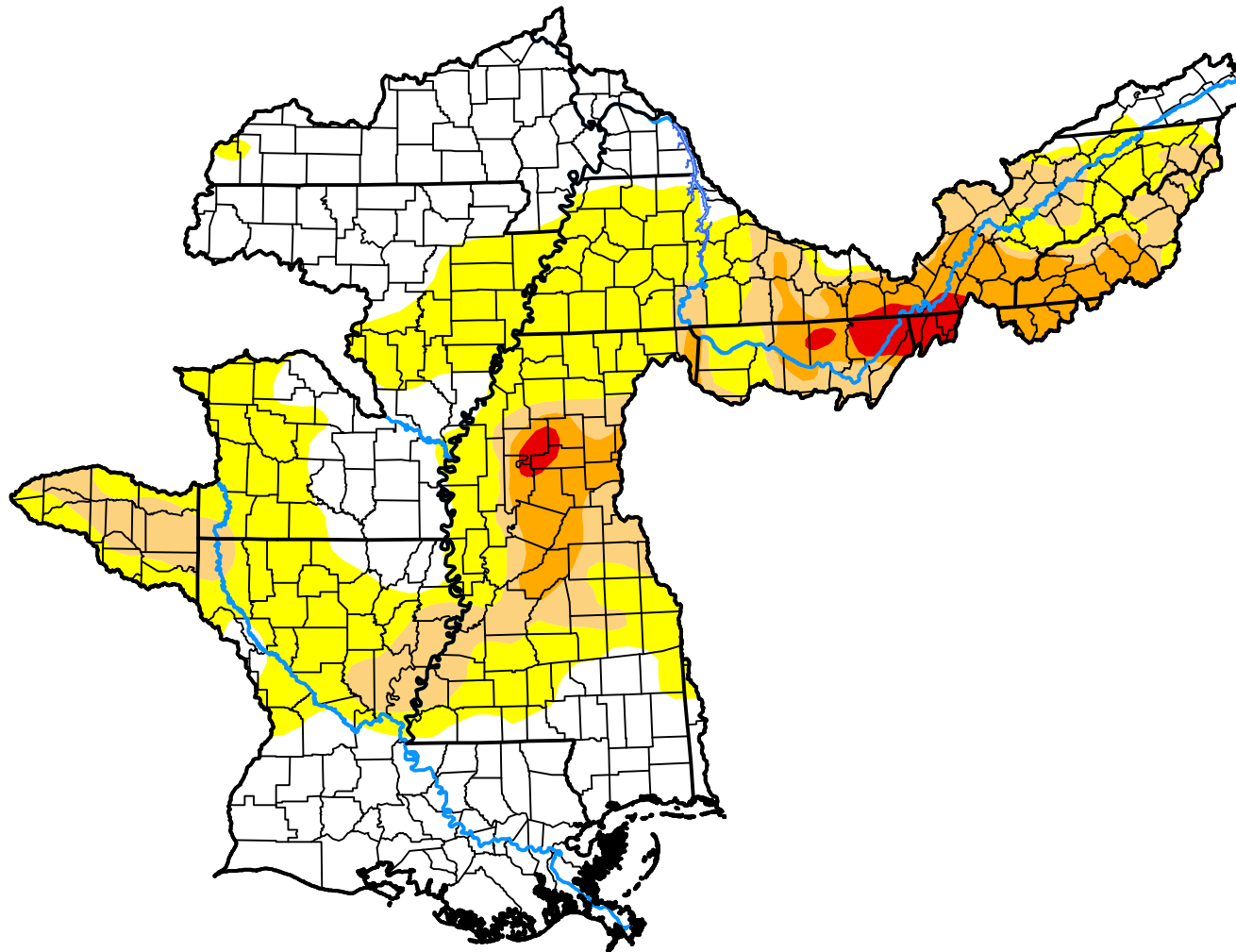
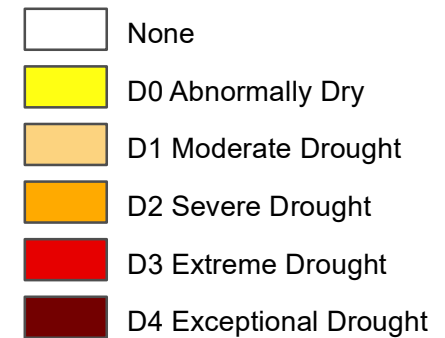


# U.S. Drought Monitor Lower Mississippi RFC

July 26, 2016  
(Released Thursday, Jul. 28, 2016)  
Valid 8 a.m. EDT



## Intensity:



*The Drought Monitor focuses on broad-scale conditions. Local conditions may vary. For more information on the Drought Monitor, go to <https://droughtmonitor.unl.edu/About.aspx>*

## Author:

Brad Rippey  
U.S. Department of Agriculture



[droughtmonitor.unl.edu](https://droughtmonitor.unl.edu)