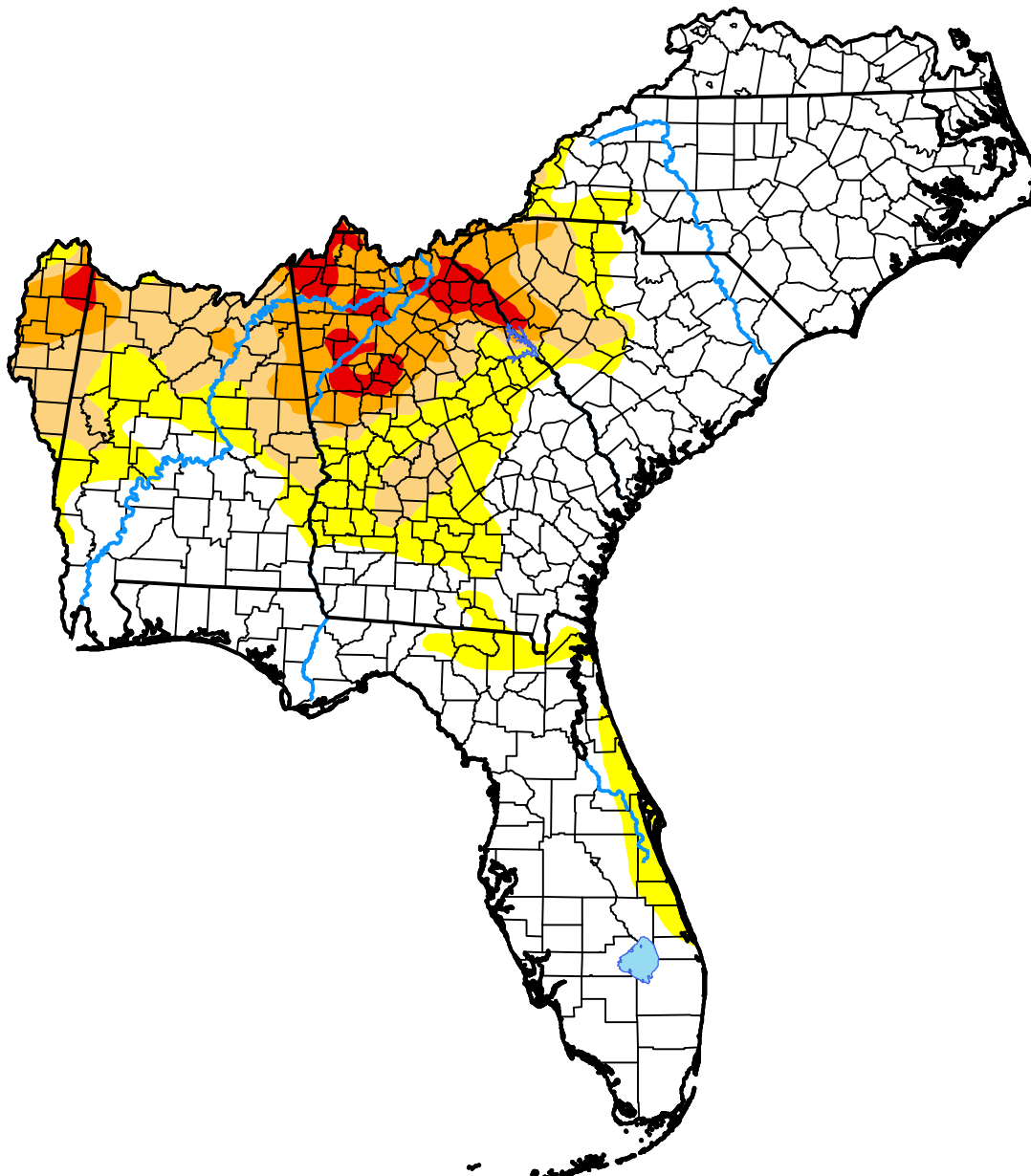


U.S. Drought Monitor

Southeast RFC

July 26, 2016
 (Released Thursday, Jul. 28, 2016)
 Valid 8 a.m. EDT



Drought Conditions (Percent Area)

	None	D0-D4	D1-D4	D2-D4	D3-D4	D4
Current	64.68	35.32	20.11	9.94	2.79	0.00
Last Week <i>07-21-2016</i>	66.29	33.71	20.36	9.81	2.27	0.00
3 Months Ago <i>04-28-2016</i>	68.70	31.30	1.58	0.00	0.00	0.00
Start of Calendar Year <i>12-31-2015</i>	94.27	5.73	0.00	0.00	0.00	0.00
Start of Water Year <i>10-01-2015</i>	53.12	46.88	13.09	2.01	0.00	0.00
One Year Ago <i>07-30-2015</i>	50.70	49.30	20.62	2.58	0.27	0.00

Intensity:



The Drought Monitor focuses on broad-scale conditions. Local conditions may vary. For more information on the Drought Monitor, go to <https://droughtmonitor.unl.edu/About.aspx>

Author:

Brad Rippey
 U.S. Department of Agriculture

