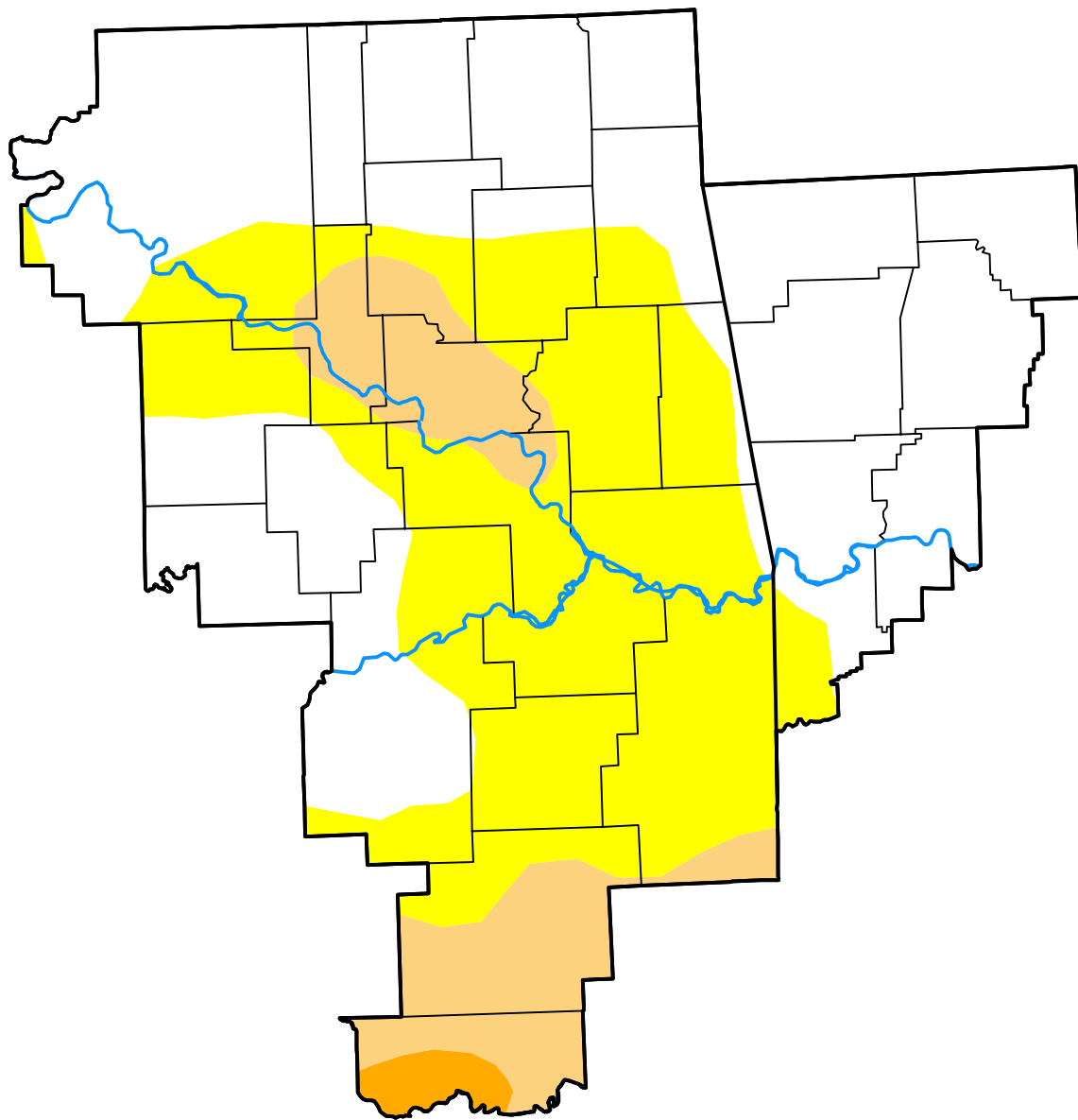


U.S. Drought Monitor Tulsa, OK WFO

July 26, 2016
(Released Thursday, Jul. 28, 2016)
Valid 8 a.m. EDT



Drought Conditions (Percent Area)

	None	D0	D1	D2	D3	D4
Current	51.65	36.05	11.20	1.10	0.00	0.00
Last Week <i>07-21-2016</i>	51.84	40.21	7.96	0.00	0.00	0.00
3 Months Ago <i>04-28-2016</i>	55.48	44.52	0.00	0.00	0.00	0.00
Start of Calendar Year <i>12-31-2015</i>	100.00	0.00	0.00	0.00	0.00	0.00
Start of Water Year <i>10-01-2015</i>	87.68	5.30	2.22	4.80	0.00	0.00
One Year Ago <i>07-30-2015</i>	100.00	0.00	0.00	0.00	0.00	0.00

Intensity:

- None
- D0 Abnormally Dry
- D1 Moderate Drought
- D2 Severe Drought
- D3 Extreme Drought
- D4 Exceptional Drought

The Drought Monitor focuses on broad-scale conditions. Local conditions may vary. For more information on the Drought Monitor, go to <https://droughtmonitor.unl.edu/About.aspx>

Author:

Brad Rippey
U.S. Department of Agriculture

