

U.S. Drought Monitor

Arkansas-White-Red Watershed

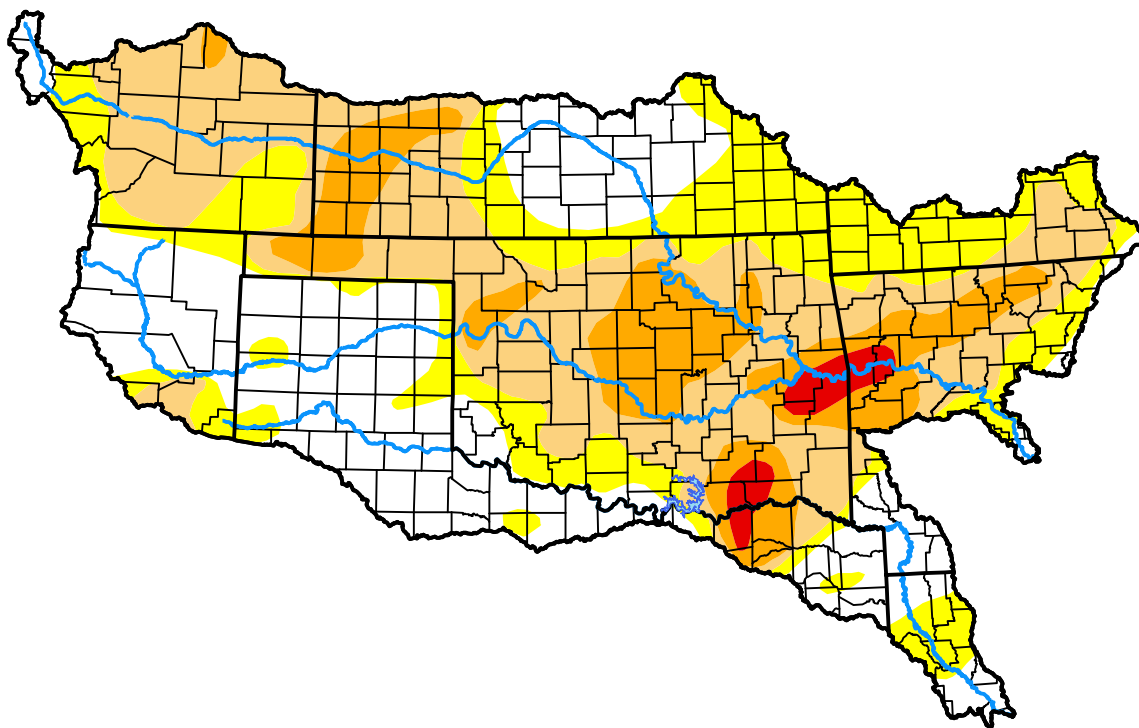
February 7, 2017

(Released Thursday, Feb. 9, 2017)

Valid 7 a.m. EST

Drought Conditions (Percent Area)

	None	D0	D1	D2	D3	D4
Current	30.34	23.80	30.51	13.58	1.77	0.00
Last Week <i>02-02-2017</i>	31.53	23.00	30.78	13.15	1.54	0.00
3 Months Ago <i>11-10-2016</i>	39.77	27.13	24.07	9.03	0.00	0.00
Start of Calendar Year <i>01-05-2017</i>	12.70	33.65	29.11	22.50	2.04	0.00
Start of Water Year <i>09-29-2016</i>	79.48	14.68	4.98	0.86	0.00	0.00
One Year Ago <i>02-11-2016</i>	98.30	1.70	0.00	0.00	0.00	0.00



Intensity:



The Drought Monitor focuses on broad-scale conditions. Local conditions may vary. For more information on the Drought Monitor, go to <https://droughtmonitor.unl.edu/About.aspx>

Author:

David Simeral
Western Regional Climate Center



droughtmonitor.unl.edu