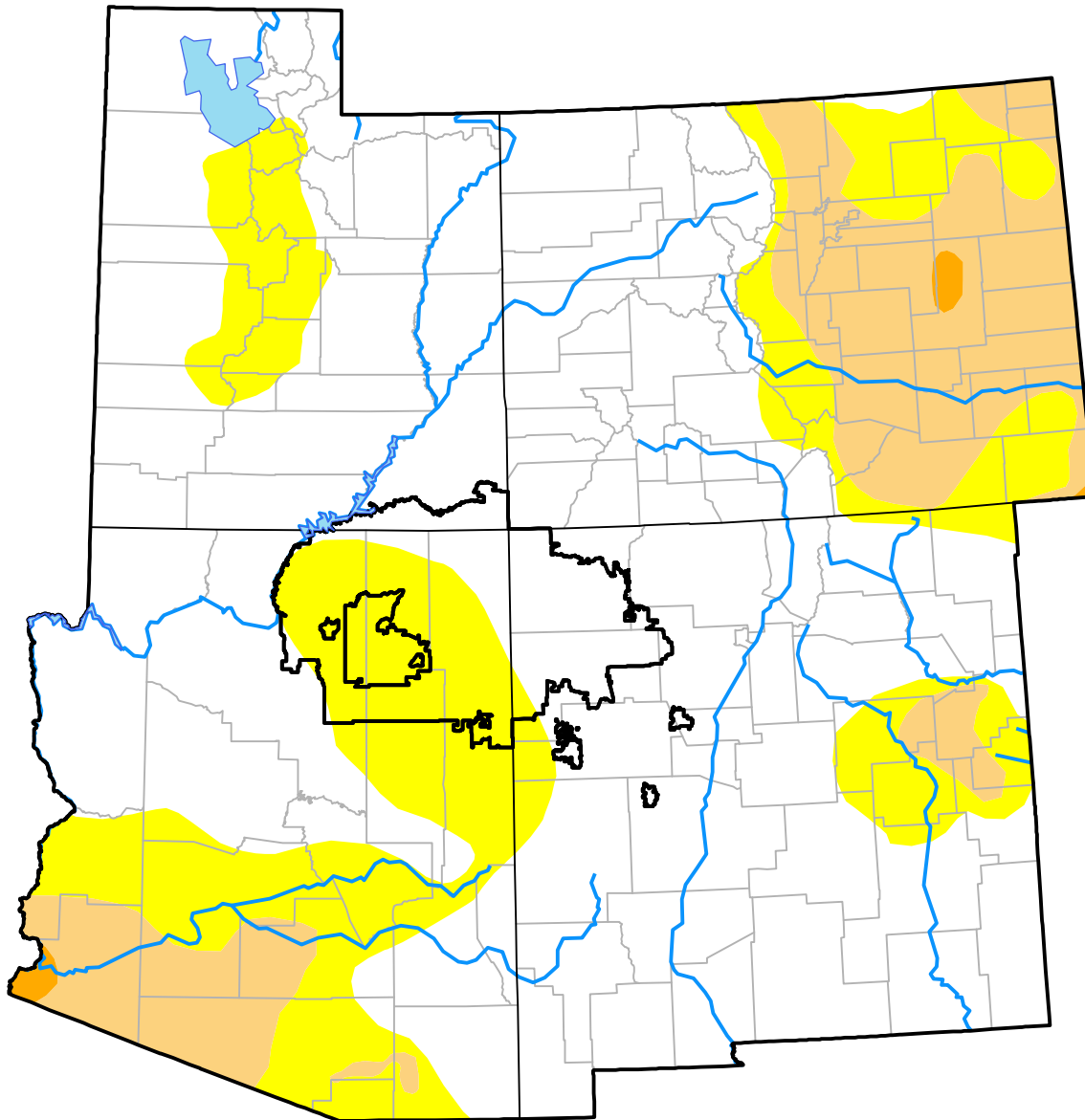


# U.S. Drought Monitor

## Navajo RDEWS

**February 7, 2017**  
 (Released Thursday, Feb. 9, 2017)  
 Valid 7 a.m. EST



*Drought Conditions (Percent Area)*

	None	D0-D4	D1-D4	D2-D4	D3-D4	D4
<b>Current</b>	52.03	47.97	0.00	0.00	0.00	0.00
<b>Last Week</b> <i>02-02-2017</i>	52.03	47.97	0.00	0.00	0.00	0.00
<b>3 Months Ago</b> <i>11-10-2016</i>	0.93	99.07	32.28	0.00	0.00	0.00
<b>Start of Calendar Year</b> <i>01-05-2017</i>	41.25	58.75	21.38	0.00	0.00	0.00
<b>Start of Water Year</b> <i>09-29-2016</i>	2.59	97.41	32.28	0.00	0.00	0.00
<b>One Year Ago</b> <i>02-11-2016</i>	80.01	19.99	0.00	0.00	0.00	0.00

***Intensity:***

- None
- D0 Abnormally Dry
- D1 Moderate Drought
- D2 Severe Drought
- D3 Extreme Drought
- D4 Exceptional Drought

*The Drought Monitor focuses on broad-scale conditions. Local conditions may vary. For more information on the Drought Monitor, go to <https://droughtmonitor.unl.edu/About.aspx>*

***Author:***

David Simeral  
 Western Regional Climate Center

