

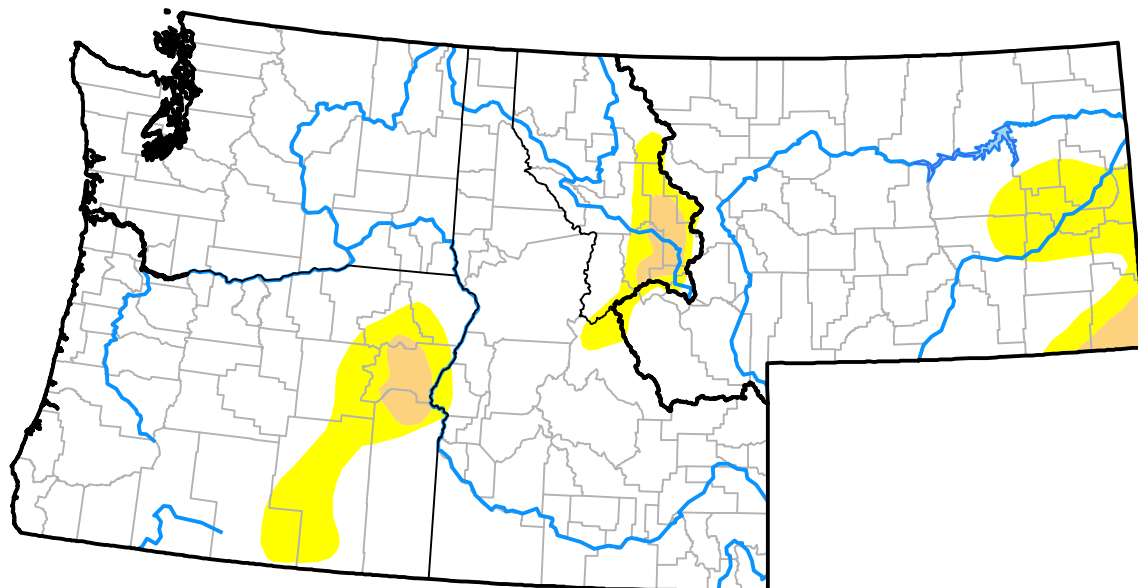
# U.S. Drought Monitor

## Pacific Northwest RDEWS

**February 7, 2017**  
 (Released Thursday, Feb. 9, 2017)  
 Valid 7 a.m. EST

*Drought Conditions (Percent Area)*

	None	D0	D1	D2	D3	D4
<b>Current</b>	90.98	7.08	1.94	0.00	0.00	0.00
<b>Last Week</b> <i>02-02-2017</i>	90.72	7.34	1.94	0.00	0.00	0.00
<b>3 Months Ago</b> <i>11-10-2016</i>	76.97	13.12	8.97	0.93	0.00	0.00
<b>Start of Calendar Year</b> <i>01-05-2017</i>	81.28	15.49	3.23	0.00	0.00	0.00
<b>Start of Water Year</b> <i>09-29-2016</i>	3.39	67.88	23.30	5.43	0.00	0.00
<b>One Year Ago</b> <i>02-11-2016</i>	26.32	20.03	33.88	17.86	1.91	0.00



***Intensity:***

- None
- D0 Abnormally Dry
- D1 Moderate Drought
- D2 Severe Drought
- D3 Extreme Drought
- D4 Exceptional Drought

*The Drought Monitor focuses on broad-scale conditions. Local conditions may vary. For more information on the Drought Monitor, go to <https://droughtmonitor.unl.edu/About.aspx>*

***Author:***

David Simeral  
 Western Regional Climate Center

