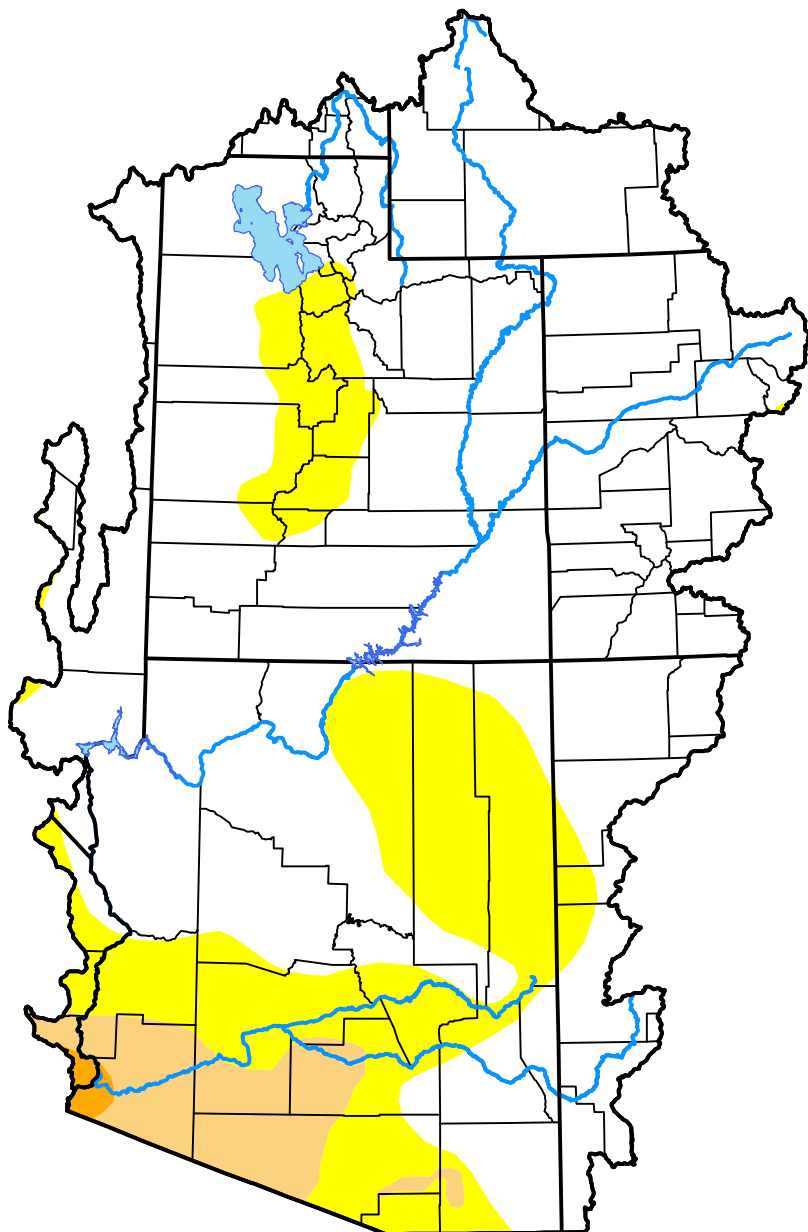


# U.S. Drought Monitor

## Colorado Basin RFC

**February 7, 2017**  
 (Released Thursday, Feb. 9, 2017)  
 Valid 7 a.m. EST



*Drought Conditions (Percent Area)*

	None	D0	D1	D2	D3	D4
<b>Current</b>	74.04	20.43	5.17	0.35	0.00	0.00
<b>Last Week</b> <i>02-02-2017</i>	67.49	26.98	5.17	0.35	0.00	0.00
<b>3 Months Ago</b> <i>11-10-2016</i>	28.92	48.58	19.79	2.71	0.00	0.00
<b>Start of Calendar Year</b> <i>01-05-2017</i>	54.20	31.77	12.54	1.50	0.00	0.00
<b>Start of Water Year</b> <i>09-29-2016</i>	29.69	47.90	19.71	2.71	0.00	0.00
<b>One Year Ago</b> <i>02-11-2016</i>	44.37	39.81	12.21	3.62	0.00	0.00

***Intensity:***



*The Drought Monitor focuses on broad-scale conditions. Local conditions may vary. For more information on the Drought Monitor, go to <https://droughtmonitor.unl.edu/About.aspx>*

***Author:***

David Simeral  
 Western Regional Climate Center

