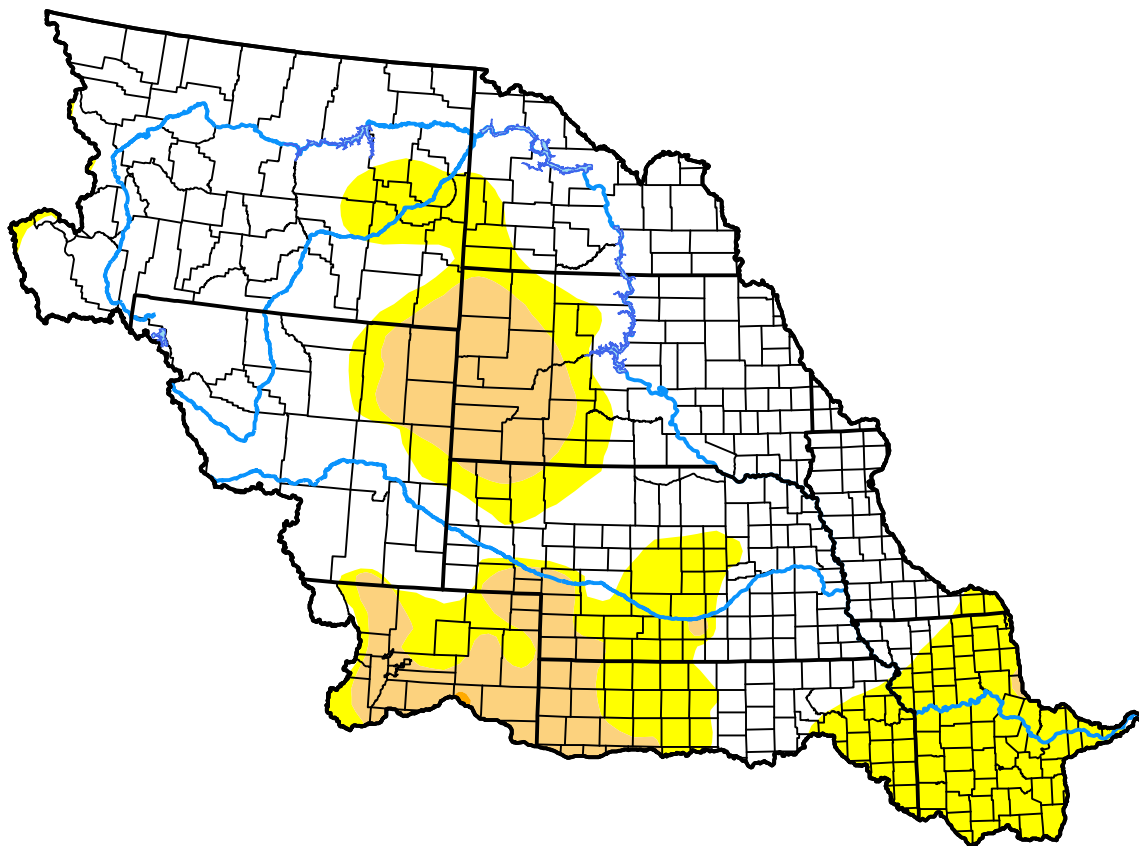


U.S. Drought Monitor

Missouri Basin RFC

February 7, 2017
 (Released Thursday, Feb. 9, 2017)
 Valid 7 a.m. EST



Drought Conditions (Percent Area)

	None	D0-D4	D1-D4	D2-D4	D3-D4	D4
Current	64.49	35.51	12.44	0.03	0.00	0.00
Last Week <i>02-02-2017</i>	63.61	36.39	12.44	0.03	0.00	0.00
3 Months Ago <i>11-10-2016</i>	64.15	35.85	10.32	0.65	0.00	0.00
Start of Calendar Year <i>01-05-2017</i>	55.38	44.62	15.99	1.41	0.00	0.00
Start of Water Year <i>09-29-2016</i>	68.21	31.79	12.24	3.65	0.26	0.00
One Year Ago <i>02-11-2016</i>	73.46	26.54	6.63	0.16	0.00	0.00

Intensity:



The Drought Monitor focuses on broad-scale conditions. Local conditions may vary. For more information on the Drought Monitor, go to <https://droughtmonitor.unl.edu/About.aspx>

Author:

David Simeral
 Western Regional Climate Center

