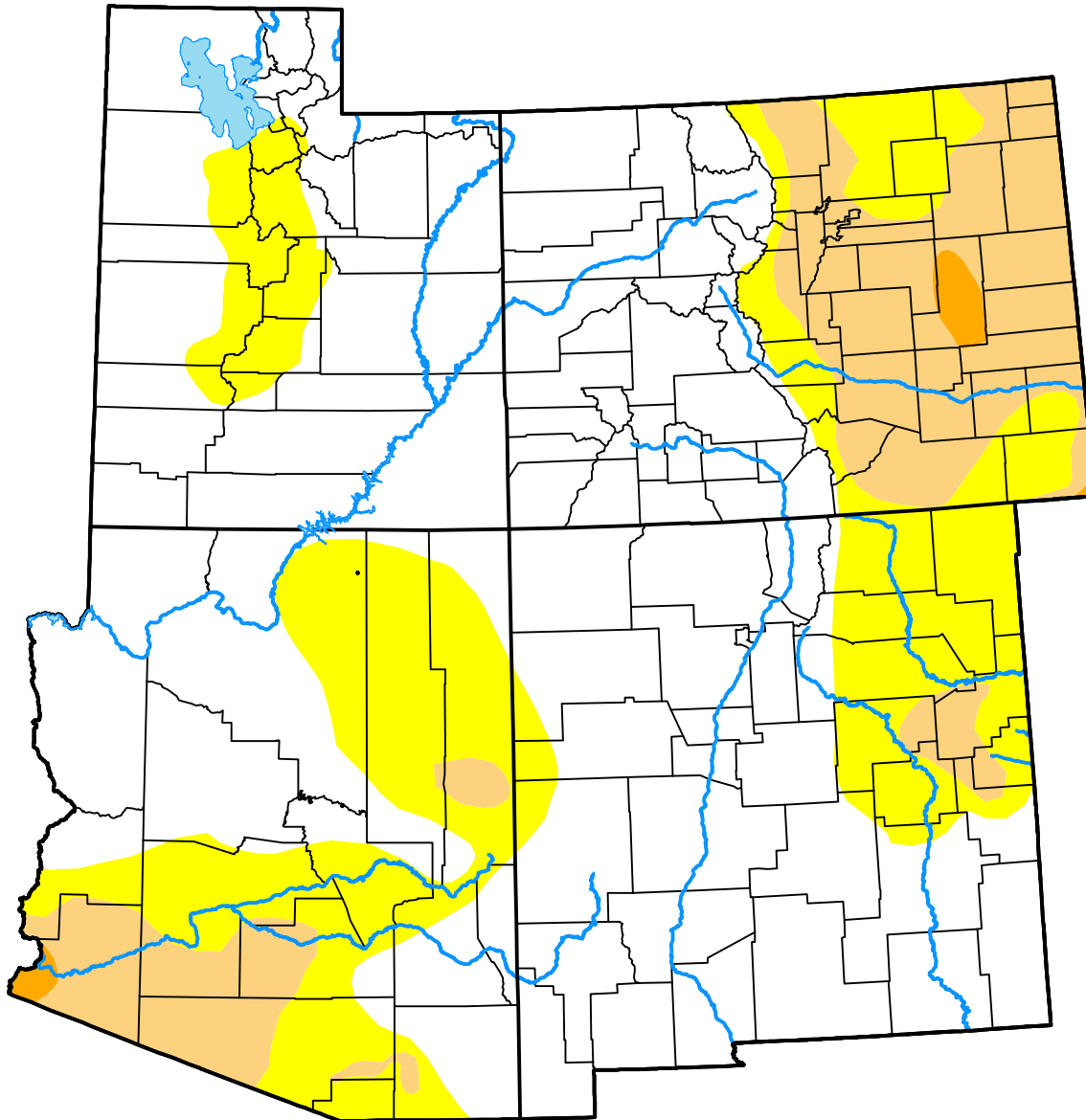


U.S. Drought Monitor Four Corners (States)

February 28, 2017
(Released Thursday, Mar. 2, 2017)
Valid 7 a.m. EST



Drought Conditions (Percent Area)

	None	D0	D1	D2	D3	D4
Current	63.90	22.38	13.15	0.57	0.00	0.00
Last Week <i>02-21-2017</i>	66.04	20.16	13.23	0.57	0.00	0.00
3 Months Ago <i>11-29-2016</i>	25.59	49.50	22.77	2.14	0.00	0.00
Start of Calendar Year <i>01-03-2017</i>	46.78	33.57	17.96	1.69	0.00	0.00
Start of Water Year <i>09-27-2016</i>	42.64	40.80	14.95	1.61	0.00	0.00
One Year Ago <i>03-01-2016</i>	54.29	35.22	7.93	2.56	0.00	0.00

Intensity:

- None
- D0 Abnormally Dry
- D1 Moderate Drought
- D2 Severe Drought
- D3 Extreme Drought
- D4 Exceptional Drought

The Drought Monitor focuses on broad-scale conditions. Local conditions may vary. For more information on the Drought Monitor, go to <https://droughtmonitor.unl.edu/About.aspx>

Author:

Richard Heim
NCEI/NOAA

