

U.S. Drought Monitor

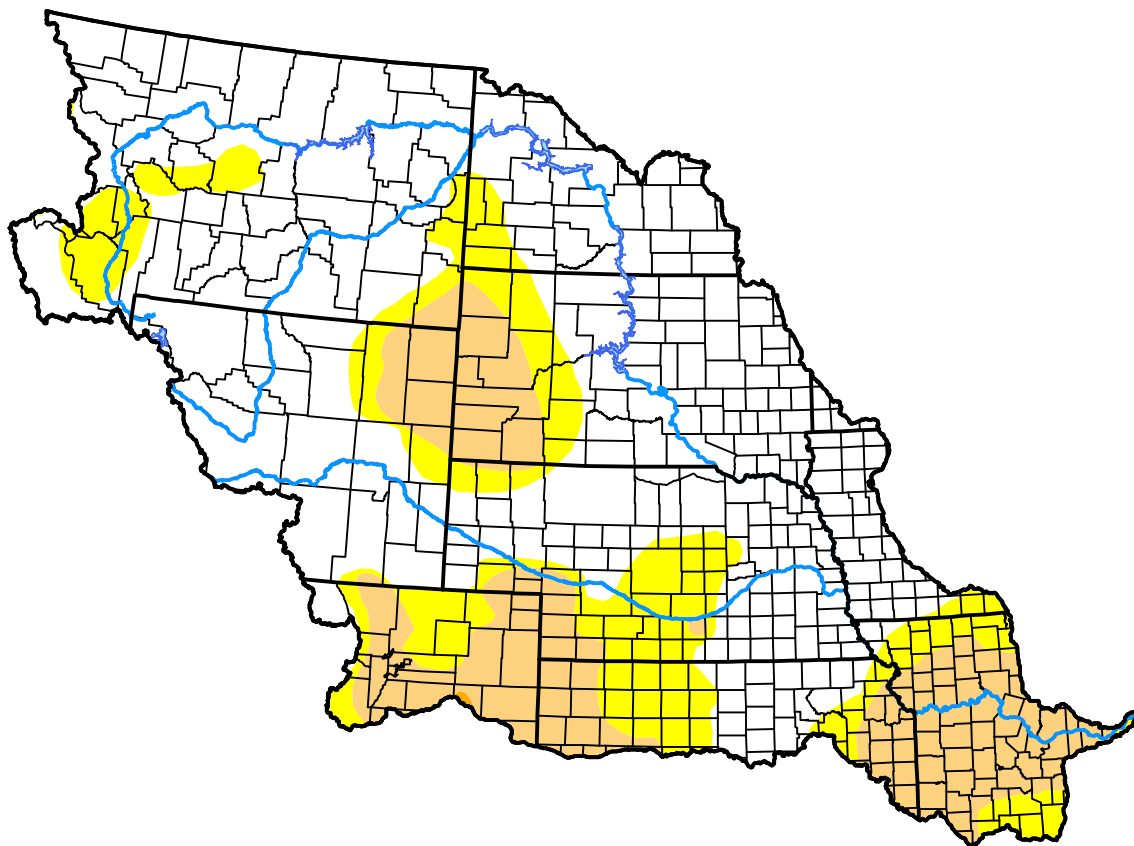
Missouri Basin RFC

February 28, 2017
(Released Thursday, Mar. 2, 2017)

Valid 7 a.m. EST

Drought Conditions (Percent Area)

	None	D0-D4	D1-D4	D2-D4	D3-D4	D4
Current	65.12	34.88	17.66	0.04	0.00	0.00
Last Week <i>02-23-2017</i>	62.80	37.20	16.06	0.04	0.00	0.00
3 Months Ago <i>12-01-2016</i>	51.75	48.25	15.33	0.99	0.00	0.00
Start of Calendar Year <i>01-05-2017</i>	55.38	44.62	15.99	1.41	0.00	0.00
Start of Water Year <i>09-29-2016</i>	68.21	31.79	12.24	3.65	0.26	0.00
One Year Ago <i>03-03-2016</i>	69.47	30.53	5.60	0.60	0.00	0.00



Intensity:

- None
- D0 Abnormally Dry
- D1 Moderate Drought
- D2 Severe Drought
- D3 Extreme Drought
- D4 Exceptional Drought

The Drought Monitor focuses on broad-scale conditions. Local conditions may vary. For more information on the Drought Monitor, go to <https://droughtmonitor.unl.edu/About.aspx>

Author:

Richard Heim
 NCEI/NOAA

