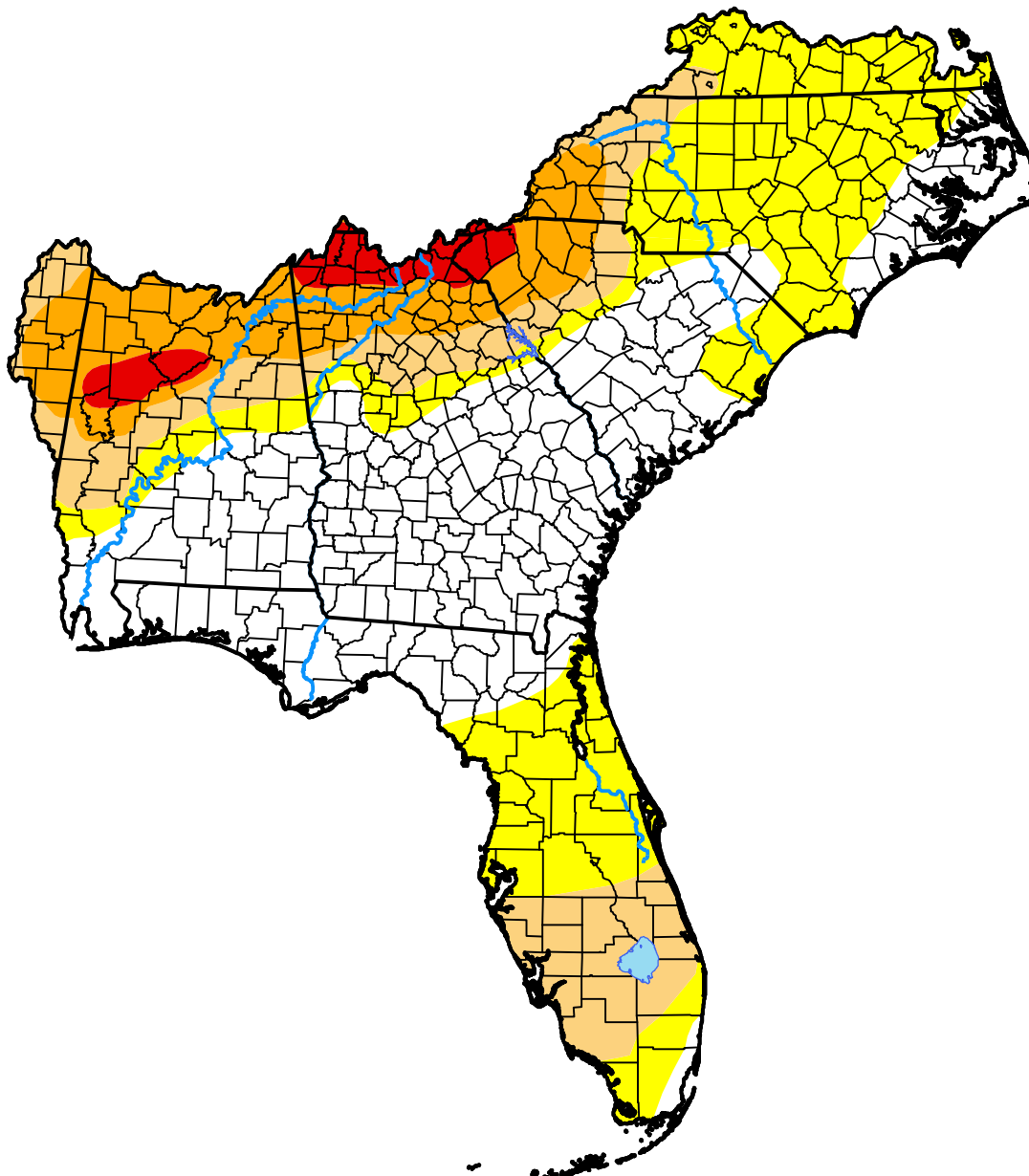


U.S. Drought Monitor Southeast RFC

February 28, 2017
(Released Thursday, Mar. 2, 2017)

Valid 7 a.m. EST



Drought Conditions (Percent Area)

	None	D0-D4	D1-D4	D2-D4	D3-D4	D4
Current	41.39	58.61	29.02	14.48	3.18	0.00
Last Week <i>02-23-2017</i>	42.61	57.39	28.24	13.15	2.48	0.00
3 Months Ago <i>12-01-2016</i>	28.24	71.76	55.42	45.82	38.39	13.60
Start of Calendar Year <i>01-05-2017</i>	26.36	73.64	38.99	20.89	9.16	0.00
Start of Water Year <i>09-29-2016</i>	56.39	43.61	23.46	11.80	4.04	0.16
One Year Ago <i>03-03-2016</i>	97.63	2.37	0.00	0.00	0.00	0.00

Intensity:



The Drought Monitor focuses on broad-scale conditions. Local conditions may vary. For more information on the Drought Monitor, go to <https://droughtmonitor.unl.edu/About.aspx>

Author:

Richard Heim
NCEI/NOAA



droughtmonitor.unl.edu