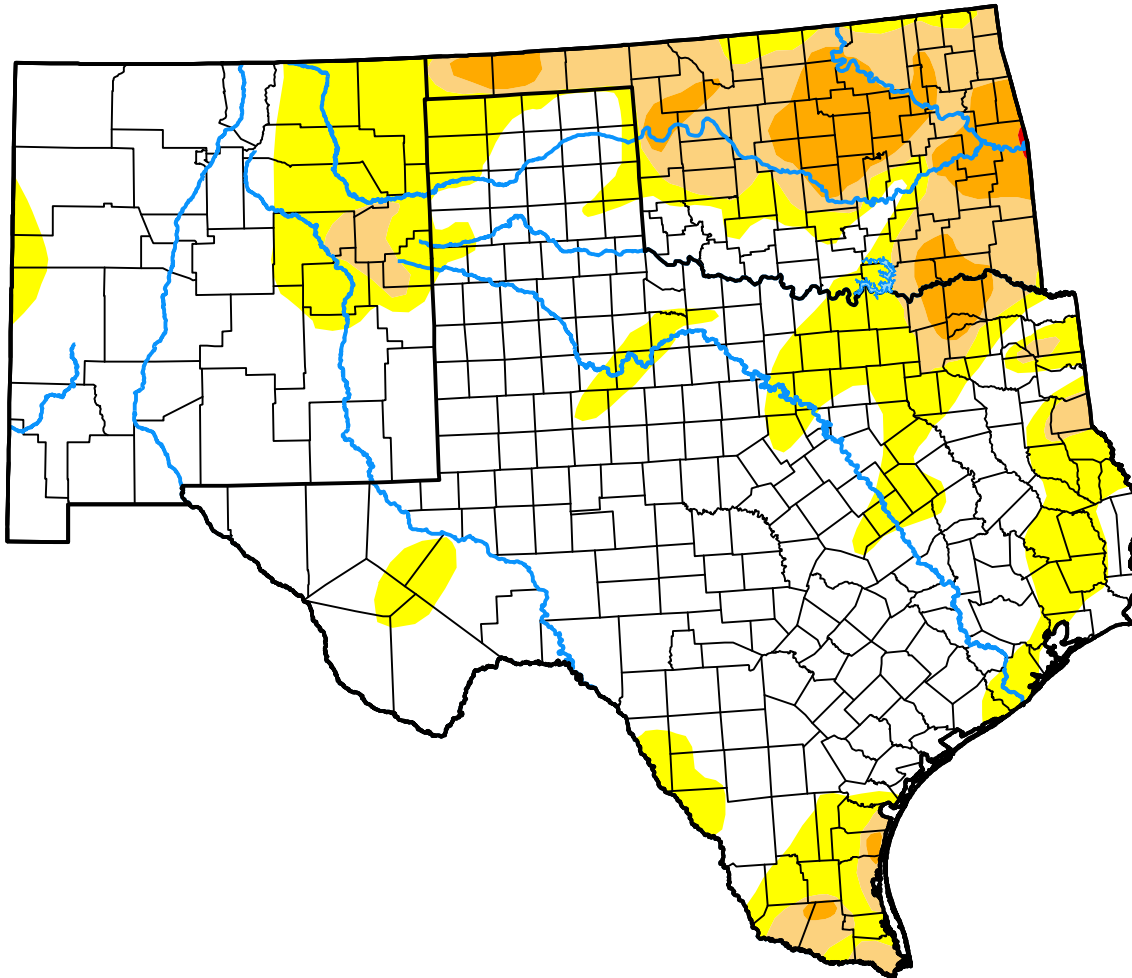


U.S. Drought Monitor

Southern Plains RDEWS

February 28, 2017
 (Released Thursday, Mar. 2, 2017)
 Valid 7 a.m. EST



Drought Conditions (Percent Area)

	None	D0	D1	D2	D3	D4
Current	66.28	19.58	9.15	4.97	0.03	0.00
Last Week <i>02-21-2017</i>	78.02	9.72	7.71	4.52	0.03	0.00
3 Months Ago <i>11-29-2016</i>	53.24	28.50	13.54	4.25	0.48	0.00
Start of Calendar Year <i>01-03-2017</i>	65.81	16.66	7.85	8.80	0.87	0.00
Start of Water Year <i>09-27-2016</i>	78.11	17.59	3.83	0.47	0.00	0.00
One Year Ago <i>03-01-2016</i>	73.79	25.58	0.63	0.00	0.00	0.00

Intensity:

- None
- D0 Abnormally Dry
- D1 Moderate Drought
- D2 Severe Drought
- D3 Extreme Drought
- D4 Exceptional Drought

The Drought Monitor focuses on broad-scale conditions. Local conditions may vary. For more information on the Drought Monitor, go to <https://droughtmonitor.unl.edu/About.aspx>

Author:

Richard Heim
 NCEI/NOAA

