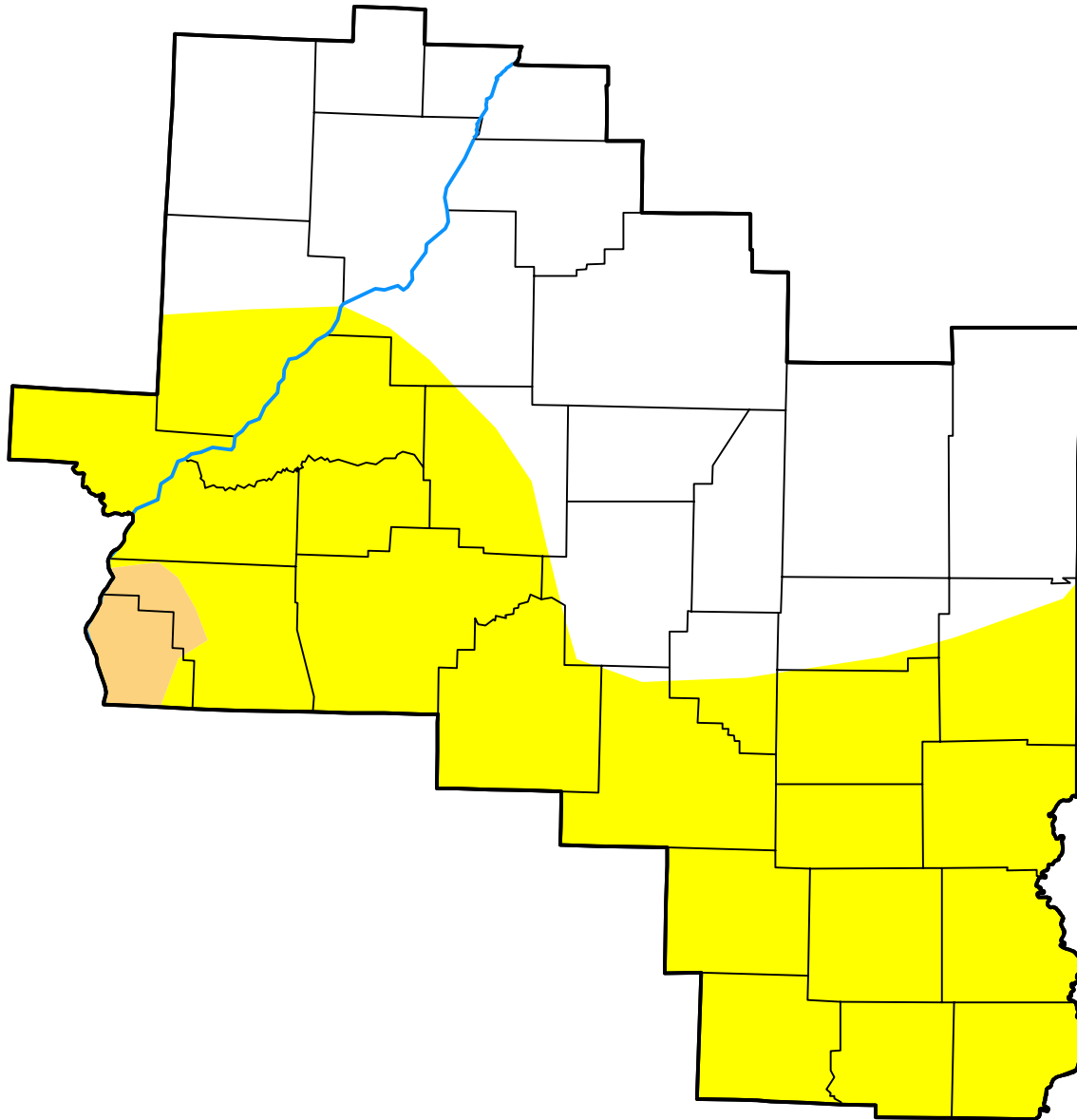


U.S. Drought Monitor Lincoln, IL WFO

February 28, 2017
(Released Thursday, Mar. 2, 2017)
Valid 7 a.m. EST



Drought Conditions (Percent Area)

	None	D0	D1	D2	D3	D4
Current	46.26	52.05	1.69	0.00	0.00	0.00
Last Week <i>02-23-2017</i>	46.82	51.49	1.69	0.00	0.00	0.00
3 Months Ago <i>12-01-2016</i>	61.37	38.63	0.00	0.00	0.00	0.00
Start of Calendar Year <i>01-05-2017</i>	59.54	35.13	5.33	0.00	0.00	0.00
Start of Water Year <i>09-29-2016</i>	100.00	0.00	0.00	0.00	0.00	0.00
One Year Ago <i>03-03-2016</i>	100.00	0.00	0.00	0.00	0.00	0.00

Intensity:

- None
- D0 Abnormally Dry
- D1 Moderate Drought
- D2 Severe Drought
- D3 Extreme Drought
- D4 Exceptional Drought

The Drought Monitor focuses on broad-scale conditions. Local conditions may vary. For more information on the Drought Monitor, go to <https://droughtmonitor.unl.edu/About.aspx>

Author:

Richard Heim
NCEI/NOAA

