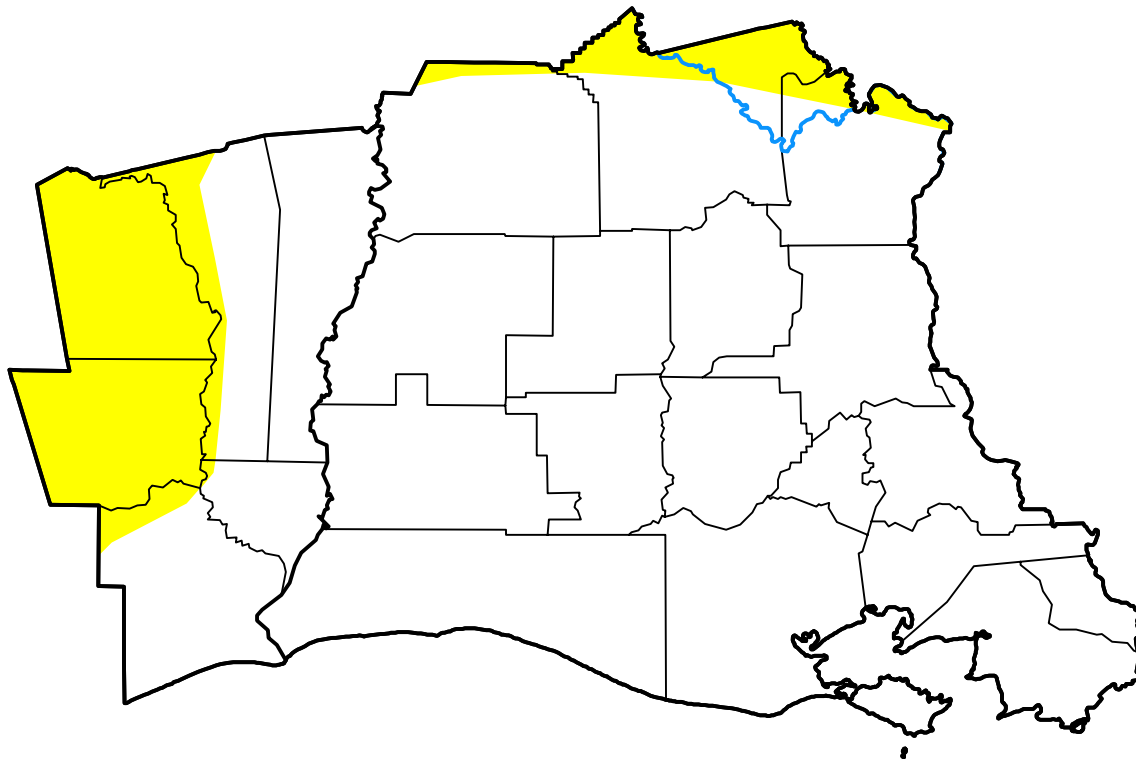


U.S. Drought Monitor

Lake Charles, LA WFO

February 28, 2017
 (Released Thursday, Mar. 2, 2017)
 Valid 7 a.m. EST



Drought Conditions (Percent Area)

	None	D0	D1	D2	D3	D4
Current	85.73	14.27	0.00	0.00	0.00	0.00
Last Week <i>02-23-2017</i>	100.00	0.00	0.00	0.00	0.00	0.00
3 Months Ago <i>12-01-2016</i>	2.99	4.17	31.31	55.35	6.17	0.00
Start of Calendar Year <i>01-05-2017</i>	83.31	16.69	0.00	0.00	0.00	0.00
Start of Water Year <i>09-29-2016</i>	100.00	0.00	0.00	0.00	0.00	0.00
One Year Ago <i>03-03-2016</i>	41.96	58.04	0.00	0.00	0.00	0.00

Intensity:

- None
- D0 Abnormally Dry
- D1 Moderate Drought
- D2 Severe Drought
- D3 Extreme Drought
- D4 Exceptional Drought

The Drought Monitor focuses on broad-scale conditions. Local conditions may vary. For more information on the Drought Monitor, go to <https://droughtmonitor.unl.edu/About.aspx>

Author:

Richard Heim
 NCEI/NOAA

