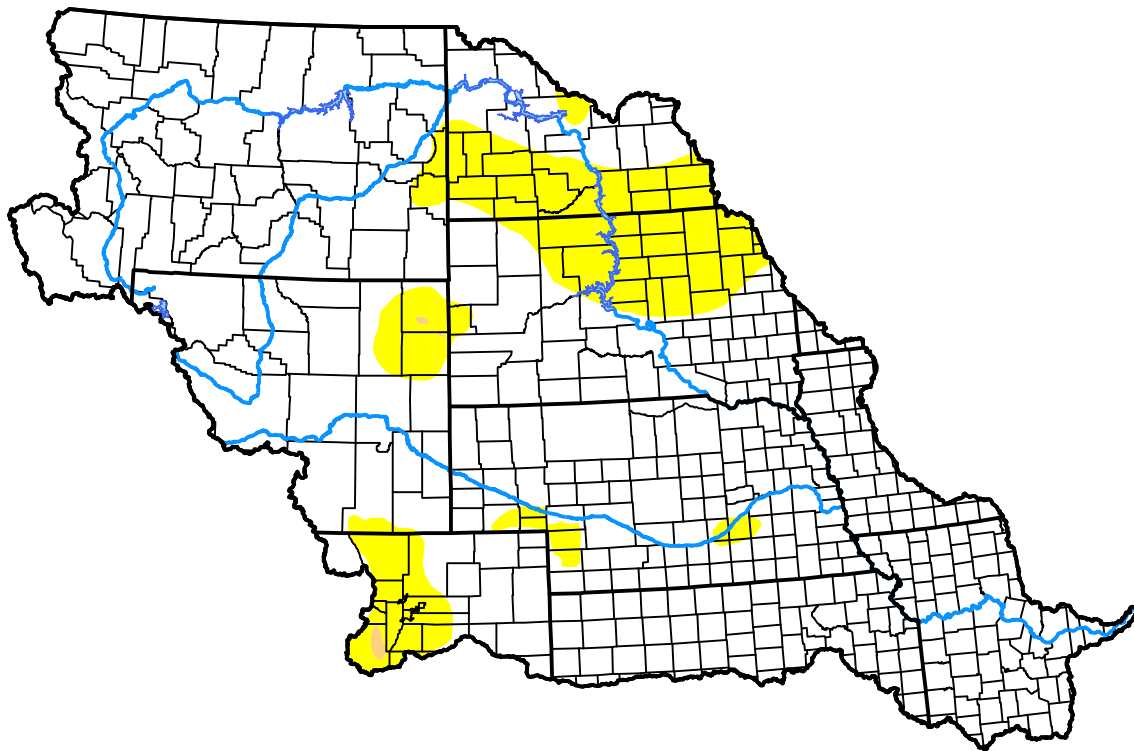


U.S. Drought Monitor

Missouri Watershed

May 16, 2017
 (Released Thursday, May. 18, 2017)
 Valid 8 a.m. EDT



Drought Conditions (Percent Area)

	None	D0-D4	D1-D4	D2-D4	D3-D4	D4
Current	86.19	13.81	0.11	0.00	0.00	0.00
Last Week <i>05-11-2017</i>	86.12	13.88	0.47	0.00	0.00	0.00
3 Months Ago <i>02-16-2017</i>	63.46	36.54	13.61	0.03	0.00	0.00
Start of Calendar Year <i>01-05-2017</i>	55.33	44.67	16.00	1.41	0.00	0.00
Start of Water Year <i>09-29-2016</i>	68.17	31.83	12.24	3.65	0.26	0.00
One Year Ago <i>05-19-2016</i>	88.61	11.39	2.63	0.20	0.00	0.00

Intensity:

- None
- D0 Abnormally Dry
- D1 Moderate Drought
- D2 Severe Drought
- D3 Extreme Drought
- D4 Exceptional Drought

The Drought Monitor focuses on broad-scale conditions. Local conditions may vary. For more information on the Drought Monitor, go to <https://droughtmonitor.unl.edu/About.aspx>

Author:

Brad Rippey
 U.S. Department of Agriculture

