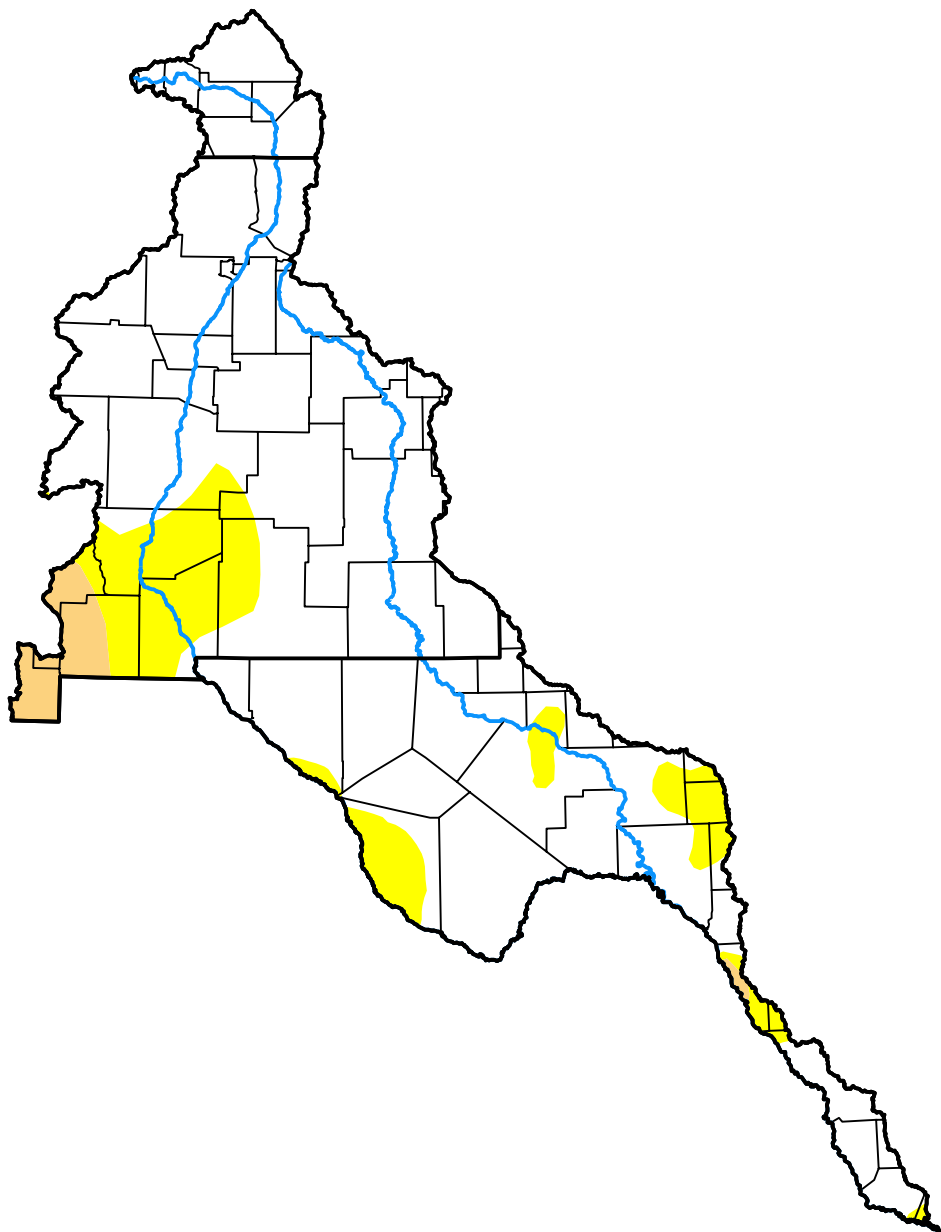


U.S. Drought Monitor

Rio Grande Watershed

May 16, 2017
 (Released Thursday, May. 18, 2017)

Valid 8 a.m. EDT



Drought Conditions (Percent Area)

	None	D0	D1	D2	D3	D4
Current	83.06	13.87	3.05	0.02	0.00	0.00
Last Week <i>05-11-2017</i>	86.02	11.10	2.88	0.00	0.00	0.00
3 Months Ago <i>02-16-2017</i>	92.74	5.54	1.72	0.00	0.00	0.00
Start of Calendar Year <i>01-05-2017</i>	83.38	15.70	0.92	0.00	0.00	0.00
Start of Water Year <i>09-29-2016</i>	75.04	24.10	0.86	0.00	0.00	0.00
One Year Ago <i>05-19-2016</i>	42.63	32.55	24.82	0.00	0.00	0.00

Intensity:

- None
- D0 Abnormally Dry
- D1 Moderate Drought
- D2 Severe Drought
- D3 Extreme Drought
- D4 Exceptional Drought

The Drought Monitor focuses on broad-scale conditions. Local conditions may vary. For more information on the Drought Monitor, go to <https://droughtmonitor.unl.edu/About.aspx>

Author:

Brad Rippey
 U.S. Department of Agriculture



droughtmonitor.unl.edu