

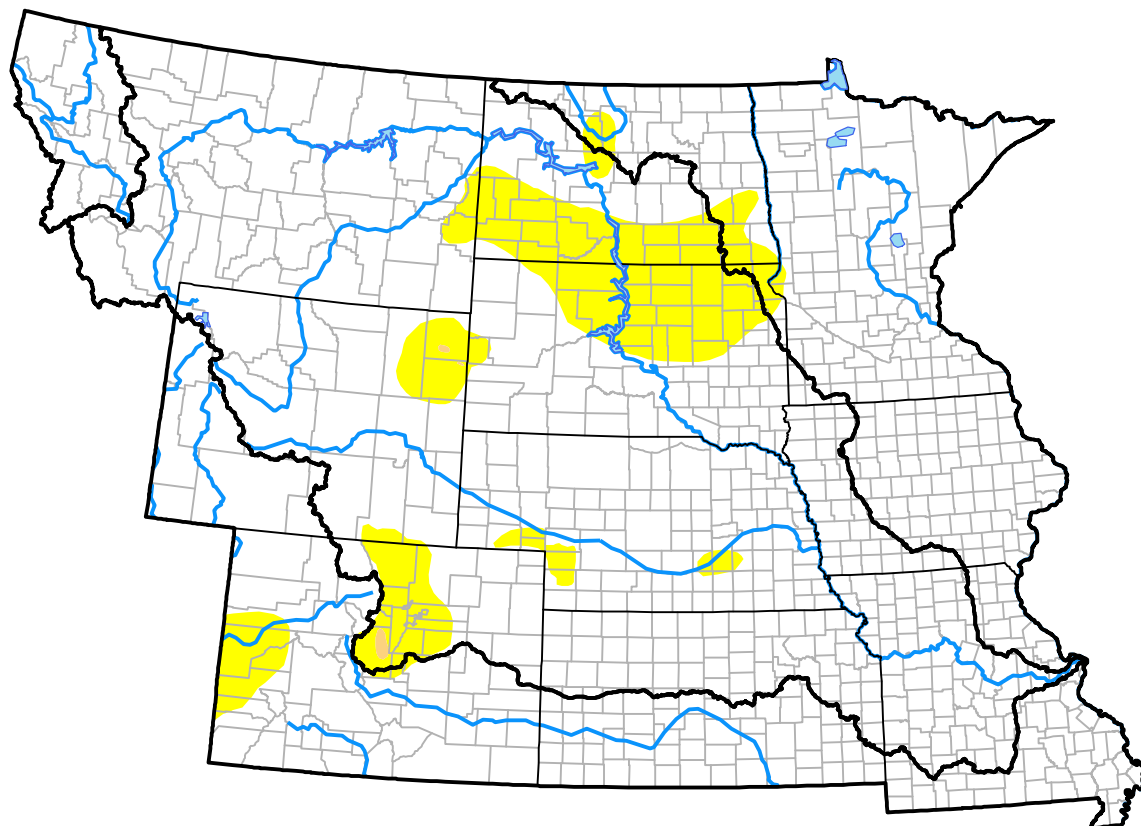
U.S. Drought Monitor

Missouri River Basin RDEWS

May 16, 2017
 (Released Thursday, May. 18, 2017)
 Valid 8 a.m. EDT

Drought Conditions (Percent Area)

	None	D0	D1	D2	D3	D4
Current	86.20	13.69	0.11	0.00	0.00	0.00
Last Week <i>05-11-2017</i>	86.13	13.40	0.47	0.00	0.00	0.00
3 Months Ago <i>02-16-2017</i>	63.50	22.91	13.57	0.03	0.00	0.00
Start of Calendar Year <i>01-05-2017</i>	55.38	28.62	14.59	1.41	0.00	0.00
Start of Water Year <i>09-29-2016</i>	68.23	19.54	8.58	3.39	0.26	0.00
One Year Ago <i>05-19-2016</i>	88.50	8.76	2.54	0.20	0.00	0.00



Intensity:



The Drought Monitor focuses on broad-scale conditions. Local conditions may vary. For more information on the Drought Monitor, go to <https://droughtmonitor.unl.edu/About.aspx>

Author:

Brad Rippey
 U.S. Department of Agriculture



droughtmonitor.unl.edu