

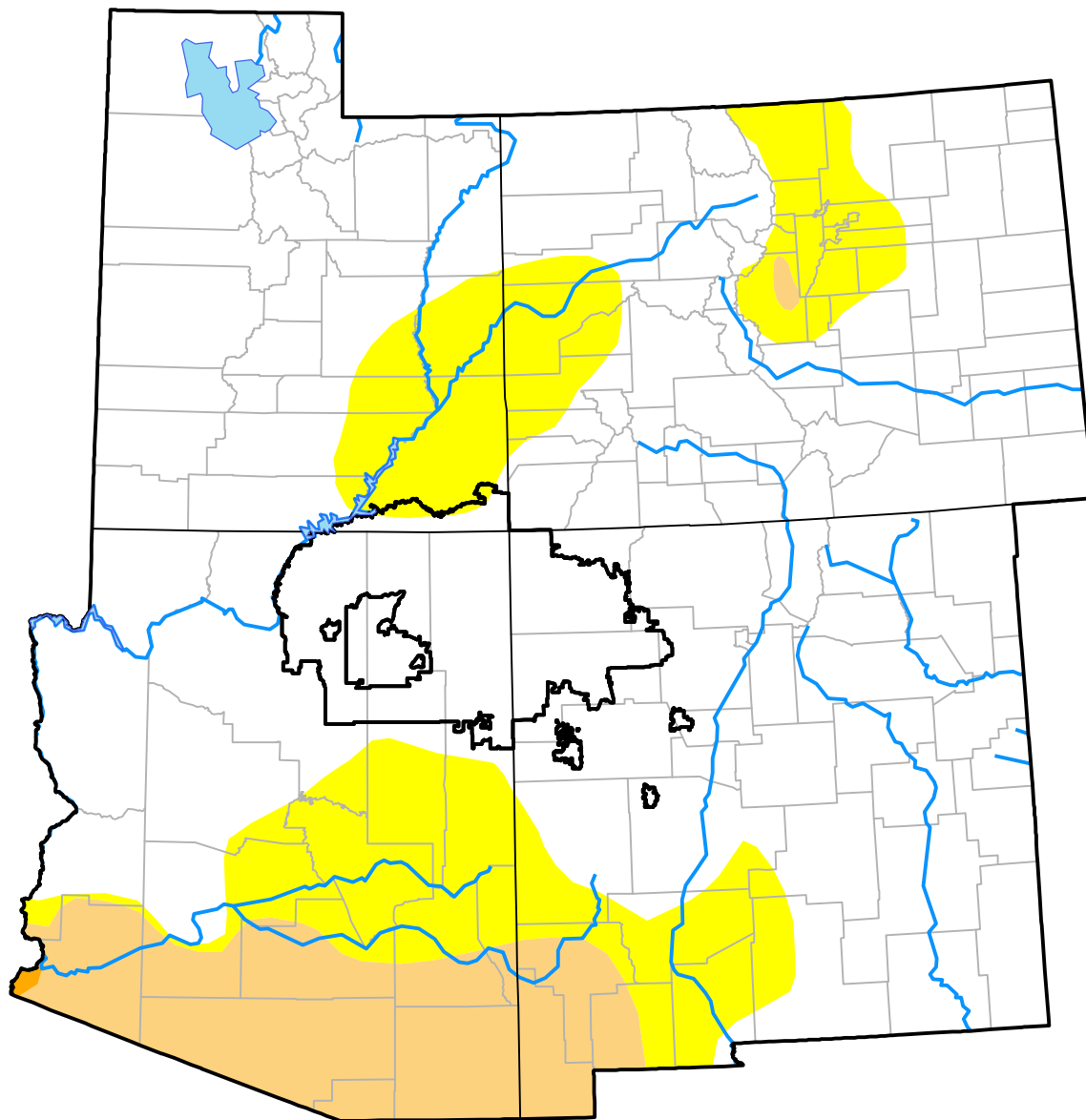
Nebraska RDEWS and Surrounding Areas

(Released Thursday, May. 18, 2017)

Valid 8 a.m. EDT

Drought Conditions (Percent Area)

	None	D0-D4	D1-D4	D2-D4	D3-D4	D4
Current	73.81	26.19	9.45	0.06	0.00	0.00
Last Week <i>05-11-2017</i>	76.25	23.75	9.53	0.06	0.00	0.00
3 Months Ago <i>02-16-2017</i>	66.09	33.91	13.50	0.35	0.00	0.00
Start of Calendar Year <i>01-05-2017</i>	46.78	53.22	19.65	1.69	0.00	0.00
Start of Water Year <i>09-29-2016</i>	42.64	57.36	16.56	1.61	0.00	0.00
One Year Ago <i>05-19-2016</i>	34.84	65.16	29.31	0.31	0.00	0.00



Intensity:

- None
- D0 Abnormally Dry
- D1 Moderate Drought
- D2 Severe Drought
- D3 Extreme Drought
- D4 Exceptional Drought

The Drought Monitor focuses on broad-scale conditions. Local conditions may vary. For more information on the Drought Monitor, go to <https://droughtmonitor.unl.edu/About.aspx>

Author:

Brad Rippey
U.S. Department of Agriculture

