

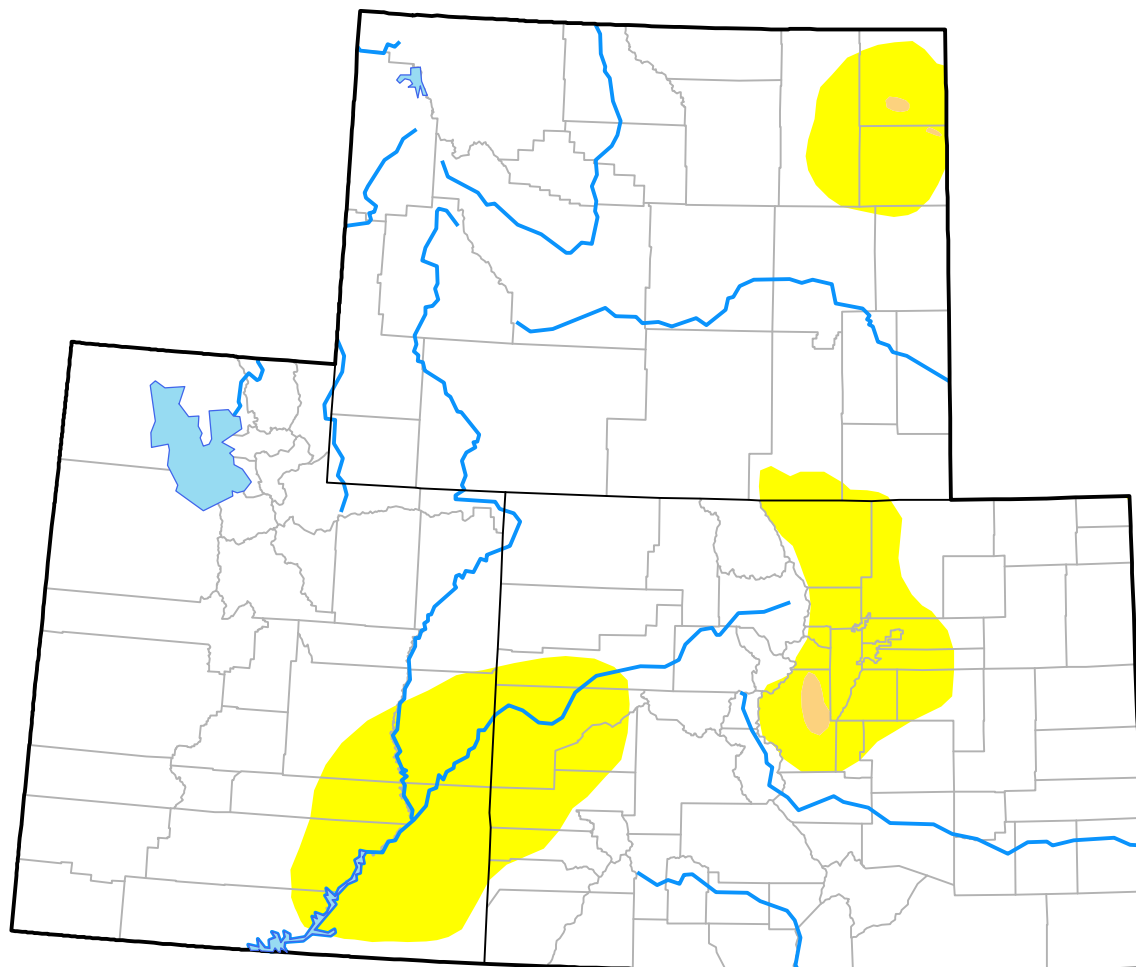
# Upper Colorado River Basin RDEWS

(Released Thursday, May. 18, 2017)

Valid 8 a.m. EDT

Drought Conditions (Percent Area)

	None	D0-D4	D1-D4	D2-D4	D3-D4	D4
<b>Current</b>	85.47	14.53	0.19	0.00	0.00	0.00
<b>Last Week</b> <i>05-11-2017</i>	88.73	11.27	0.84	0.00	0.00	0.00
<b>3 Months Ago</b> <i>02-16-2017</i>	71.74	28.26	16.58	0.27	0.00	0.00
<b>Start of Calendar Year</b> <i>01-05-2017</i>	46.62	53.38	22.75	1.29	0.00	0.00
<b>Start of Water Year</b> <i>09-29-2016</i>	52.16	47.84	13.41	4.12	0.00	0.00
<b>One Year Ago</b> <i>05-19-2016</i>	73.01	26.99	1.62	0.36	0.00	0.00



**Intensity:**

- None
- D0 Abnormally Dry
- D1 Moderate Drought
- D2 Severe Drought
- D3 Extreme Drought
- D4 Exceptional Drought

The Drought Monitor focuses on broad-scale conditions. Local conditions may vary. For more information on the Drought Monitor, go to <https://droughtmonitor.unl.edu/About.aspx>

**Author:**

Brad Rippey  
U.S. Department of Agriculture

