

# U.S. Drought Monitor

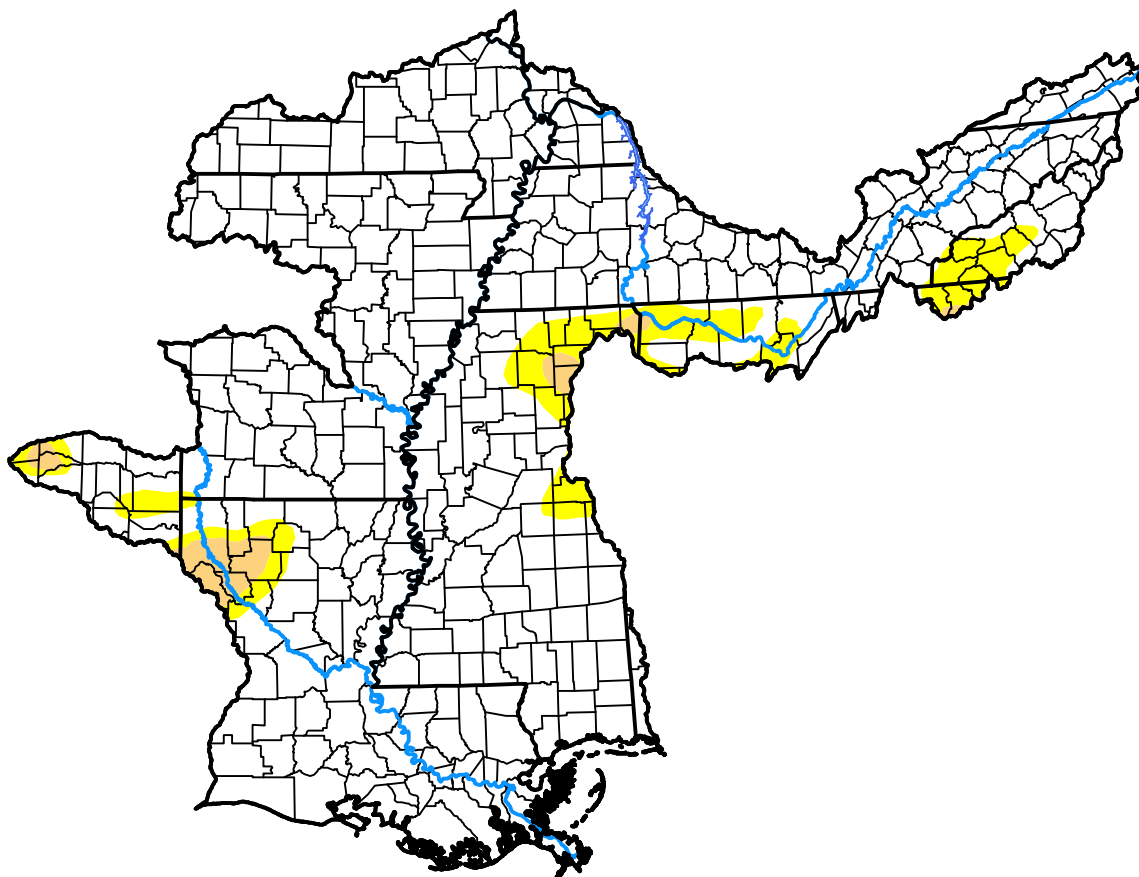
## Lower Mississippi RFC

May 16, 2017  
 (Released Thursday, May. 18, 2017)

Valid 8 a.m. EDT

Drought Conditions (Percent Area)

	None	D0-D4	D1-D4	D2-D4	D3-D4	D4
<b>Current</b>	91.59	8.41	1.85	0.00	0.00	0.00
<b>Last Week</b> <i>05-11-2017</i>	90.75	9.25	1.82	0.00	0.00	0.00
<b>3 Months Ago</b> <i>02-16-2017</i>	53.76	46.24	18.49	5.64	0.76	0.00
<b>Start of Calendar Year</b> <i>01-05-2017</i>	32.55	67.45	38.90	10.01	1.68	0.00
<b>Start of Water Year</b> <i>09-29-2016</i>	55.60	44.40	12.80	4.35	1.65	0.55
<b>One Year Ago</b> <i>05-19-2016</i>	81.85	18.15	8.93	0.00	0.00	0.00



**Intensity:**

- None
- D0 Abnormally Dry
- D1 Moderate Drought
- D2 Severe Drought
- D3 Extreme Drought
- D4 Exceptional Drought

The Drought Monitor focuses on broad-scale conditions. Local conditions may vary. For more information on the Drought Monitor, go to <https://droughtmonitor.unl.edu/About.aspx>

**Author:**

Brad Rippey  
 U.S. Department of Agriculture

