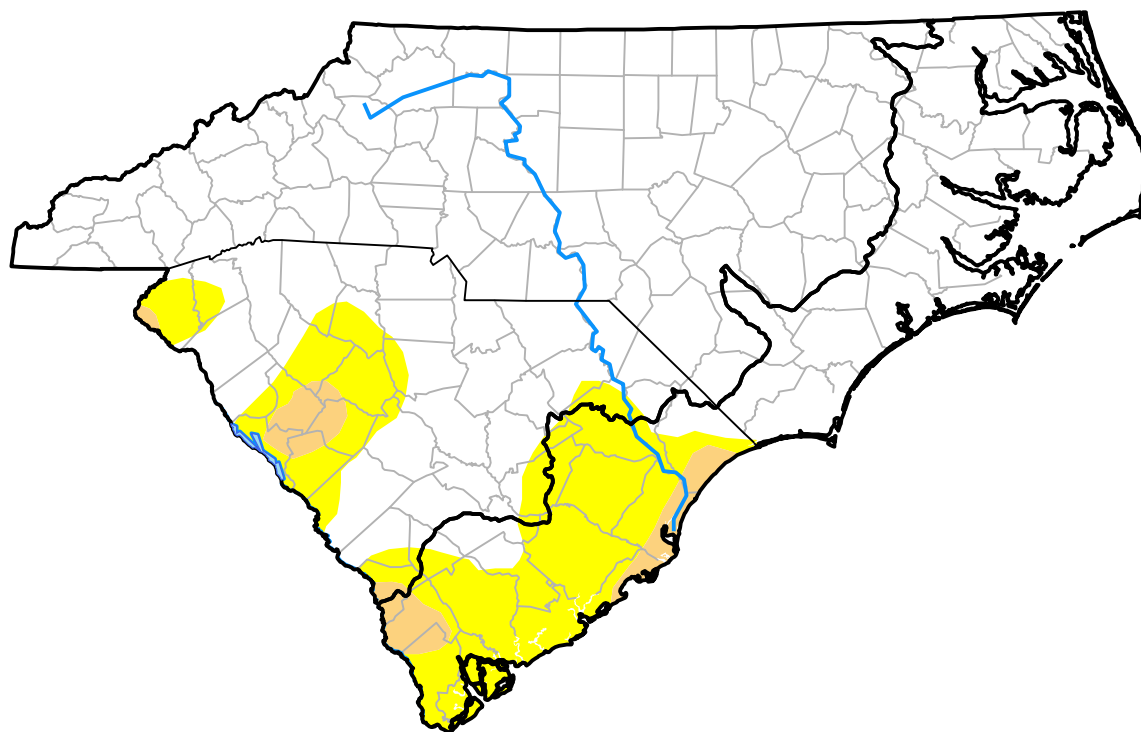


# U.S. Drought Monitor

## Coastal Carolinas RDEWS

**May 23, 2017**  
 (Released Thursday, May. 25, 2017)  
 Valid 8 a.m. EDT



*Drought Conditions (Percent Area)*

	None	D0-D4	D1-D4	D2-D4	D3-D4	D4
<b>Current</b>	61.92	38.08	5.62	0.00	0.00	0.00
<b>Last Week</b> <i>05-18-2017</i>	61.91	38.09	12.44	0.00	0.00	0.00
<b>3 Months Ago</b> <i>02-23-2017</i>	70.65	29.35	0.00	0.00	0.00	0.00
<b>Start of Calendar Year</b> <i>01-05-2017</i>	74.47	25.53	0.00	0.00	0.00	0.00
<b>Start of Water Year</b> <i>09-29-2016</i>	95.73	4.27	0.00	0.00	0.00	0.00
<b>One Year Ago</b> <i>05-26-2016</i>	100.00	0.00	0.00	0.00	0.00	0.00

***Intensity:***



*The Drought Monitor focuses on broad-scale conditions. Local conditions may vary. For more information on the Drought Monitor, go to <https://droughtmonitor.unl.edu/About.aspx>*

***Author:***

Brad Rippey  
 U.S. Department of Agriculture



**droughtmonitor.unl.edu**