

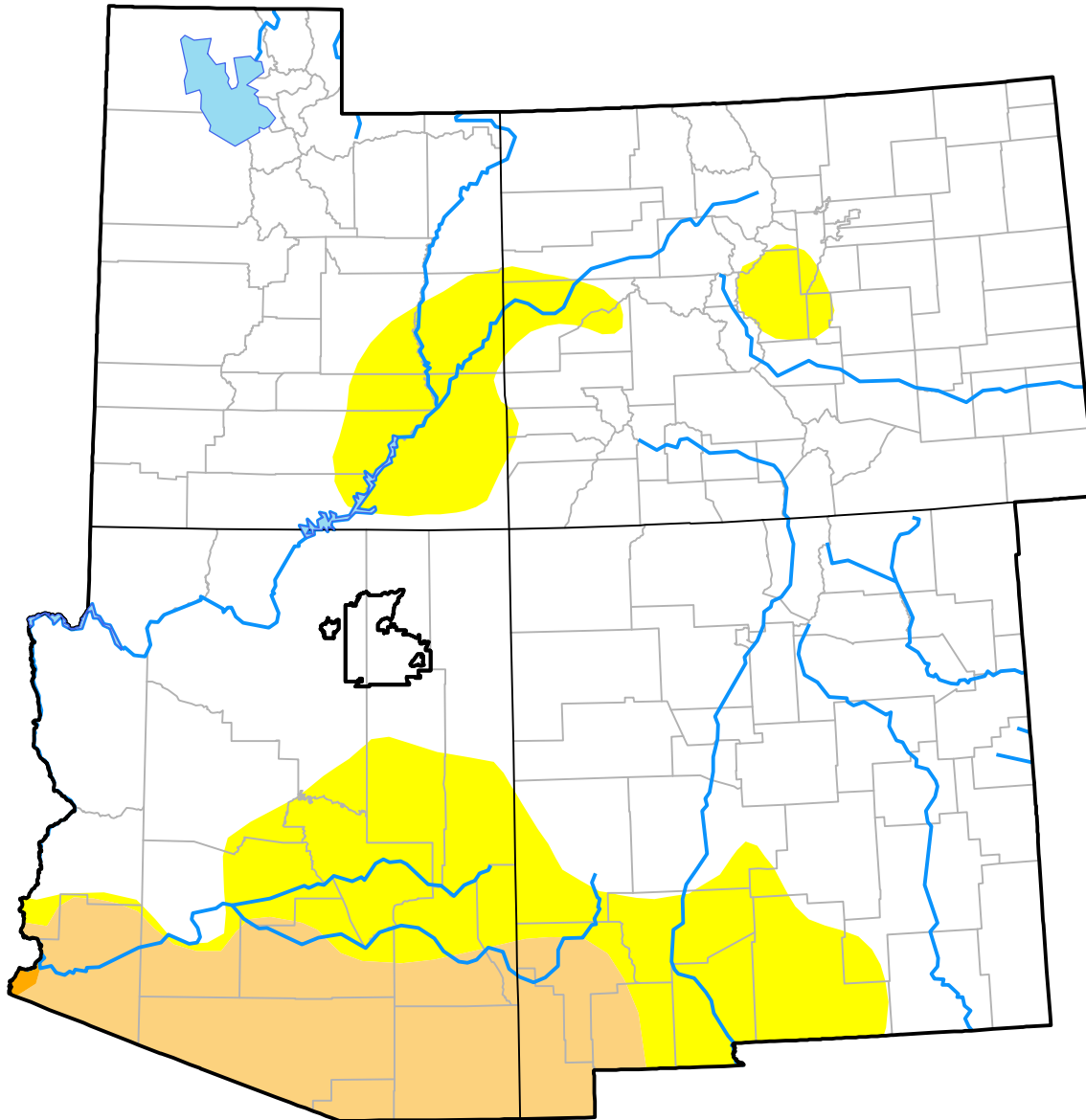
Opportunity RDEWS and Surrounding Areas

(Released Thursday, May. 25, 2017)

Valid 8 a.m. EDT

Drought Conditions (Percent Area)

| | None | D0-D4 | D1-D4 | D2-D4 | D3-D4 | D4 |
|--|-------|-------|-------|-------|-------|------|
| Current | 75.62 | 24.38 | 9.35 | 0.06 | 0.00 | 0.00 |
| Last Week <i>05-18-2017</i> | 73.81 | 26.19 | 9.45 | 0.06 | 0.00 | 0.00 |
| 3 Months Ago <i>02-23-2017</i> | 66.04 | 33.96 | 13.80 | 0.57 | 0.00 | 0.00 |
| Start of Calendar Year <i>01-05-2017</i> | 46.78 | 53.22 | 19.65 | 1.69 | 0.00 | 0.00 |
| Start of Water Year <i>09-29-2016</i> | 42.64 | 57.36 | 16.56 | 1.61 | 0.00 | 0.00 |
| One Year Ago <i>05-26-2016</i> | 35.46 | 64.54 | 28.31 | 0.31 | 0.00 | 0.00 |



Intensity:

- None
- D0 Abnormally Dry
- D1 Moderate Drought
- D2 Severe Drought
- D3 Extreme Drought
- D4 Exceptional Drought

The Drought Monitor focuses on broad-scale conditions. Local conditions may vary. For more information on the Drought Monitor, go to <https://droughtmonitor.unl.edu/About.aspx>

Author:

Brad Rippey
U.S. Department of Agriculture

