

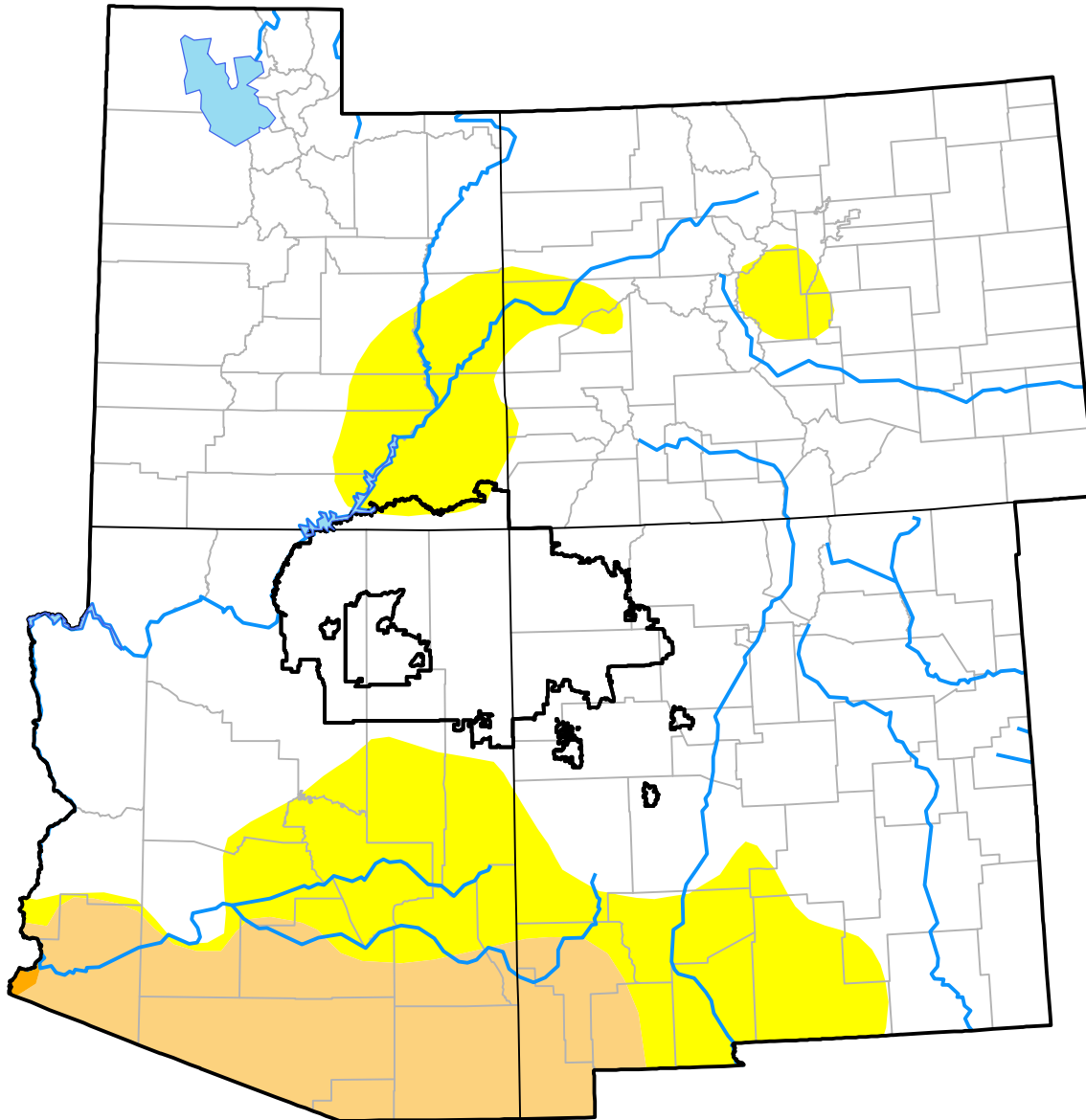
# Nebraska RDEWS and Surrounding Areas

(Released Thursday, May. 25, 2017)

Valid 8 a.m. EDT

Drought Conditions (Percent Area)

	None	D0-D4	D1-D4	D2-D4	D3-D4	D4
<b>Current</b>	75.62	24.38	9.35	0.06	0.00	0.00
<b>Last Week</b> <i>05-18-2017</i>	73.81	26.19	9.45	0.06	0.00	0.00
<b>3 Months Ago</b> <i>02-23-2017</i>	66.04	33.96	13.80	0.57	0.00	0.00
<b>Start of Calendar Year</b> <i>01-05-2017</i>	46.78	53.22	19.65	1.69	0.00	0.00
<b>Start of Water Year</b> <i>09-29-2016</i>	42.64	57.36	16.56	1.61	0.00	0.00
<b>One Year Ago</b> <i>05-26-2016</i>	35.46	64.54	28.31	0.31	0.00	0.00



**Intensity:**

- None
- D0 Abnormally Dry
- D1 Moderate Drought
- D2 Severe Drought
- D3 Extreme Drought
- D4 Exceptional Drought

The Drought Monitor focuses on broad-scale conditions. Local conditions may vary. For more information on the Drought Monitor, go to <https://droughtmonitor.unl.edu/About.aspx>

**Author:**

Brad Rippey  
U.S. Department of Agriculture

