

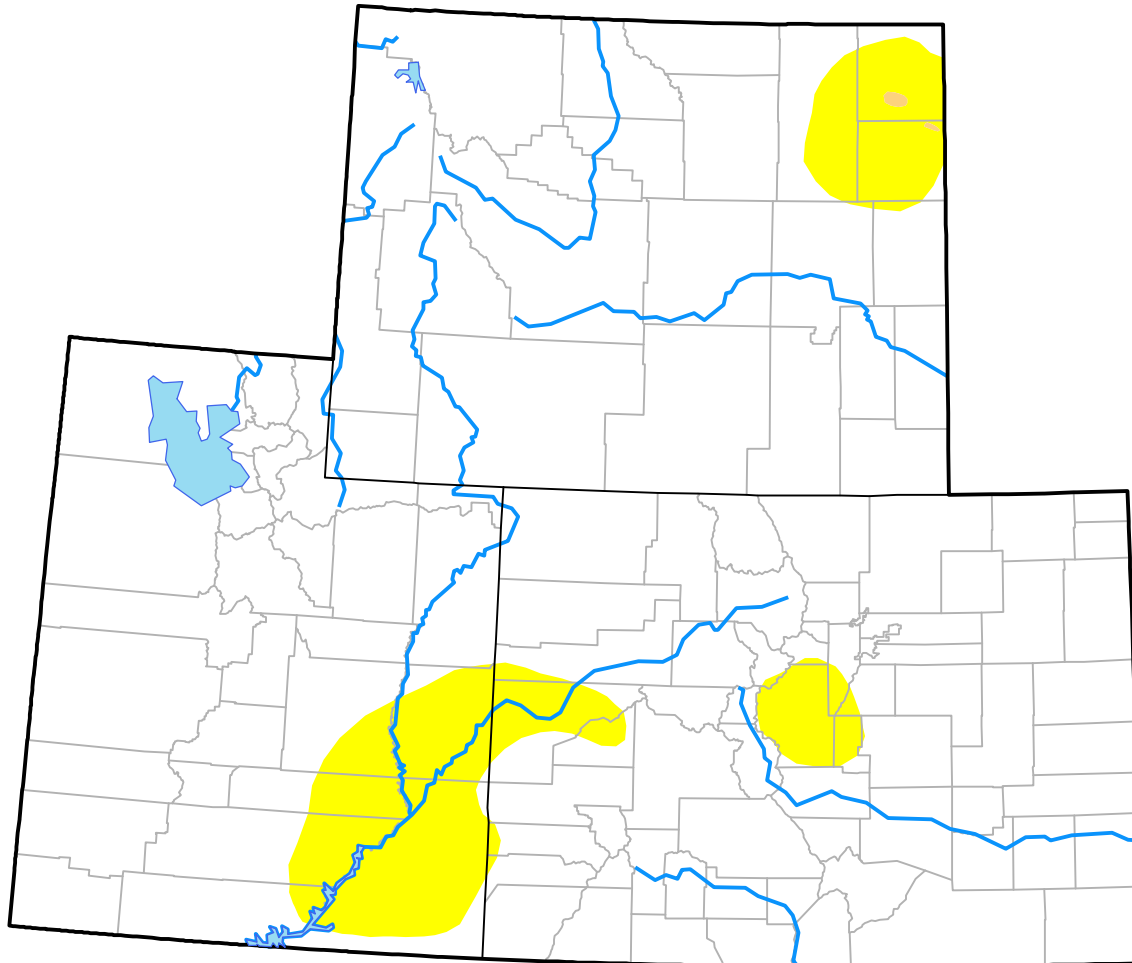
Upper Colorado River Basin RDEWS

(Released Thursday, May. 25, 2017)

Valid 8 a.m. EDT

Drought Conditions (Percent Area)

	None	D0-D4	D1-D4	D2-D4	D3-D4	D4
Current	90.61	9.39	0.04	0.00	0.00	0.00
Last Week <i>05-18-2017</i>	85.47	14.53	0.19	0.00	0.00	0.00
3 Months Ago <i>02-23-2017</i>	72.16	27.84	16.58	0.60	0.00	0.00
Start of Calendar Year <i>01-05-2017</i>	46.62	53.38	22.75	1.29	0.00	0.00
Start of Water Year <i>09-29-2016</i>	52.16	47.84	13.41	4.12	0.00	0.00
One Year Ago <i>05-26-2016</i>	74.44	25.56	1.62	0.36	0.00	0.00



Intensity:

- None
- D0 Abnormally Dry
- D1 Moderate Drought
- D2 Severe Drought
- D3 Extreme Drought
- D4 Exceptional Drought

The Drought Monitor focuses on broad-scale conditions. Local conditions may vary. For more information on the Drought Monitor, go to <https://droughtmonitor.unl.edu/About.aspx>

Author:

Brad Rippey
U.S. Department of Agriculture

