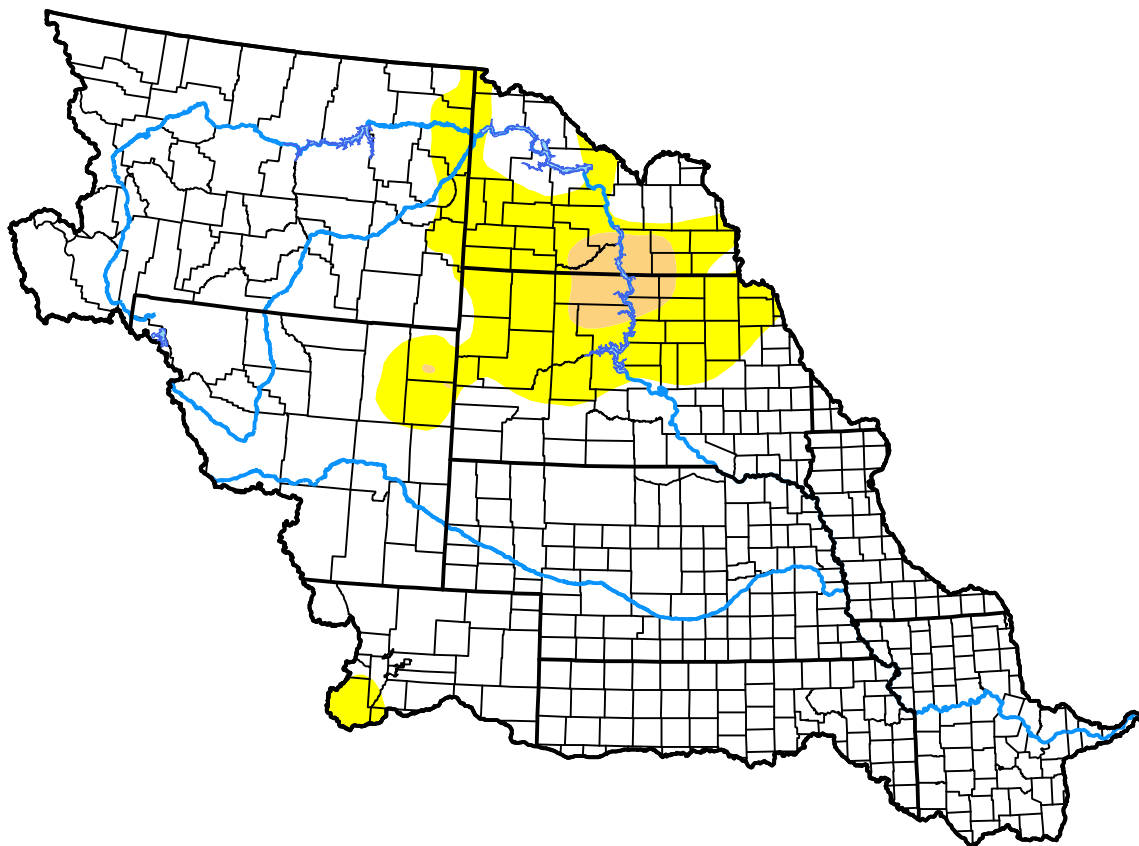


U.S. Drought Monitor

Missouri Basin RFC

May 23, 2017
 (Released Thursday, May. 25, 2017)
 Valid 8 a.m. EDT



Drought Conditions (Percent Area)

	None	D0-D4	D1-D4	D2-D4	D3-D4	D4
Current	84.52	15.48	1.93	0.00	0.00	0.00
Last Week <i>05-18-2017</i>	86.21	13.79	0.11	0.00	0.00	0.00
3 Months Ago <i>02-23-2017</i>	62.80	37.20	16.06	0.04	0.00	0.00
Start of Calendar Year <i>01-05-2017</i>	55.38	44.62	15.99	1.41	0.00	0.00
Start of Water Year <i>09-29-2016</i>	68.21	31.79	12.24	3.65	0.26	0.00
One Year Ago <i>05-26-2016</i>	88.50	11.50	2.74	0.20	0.00	0.00

Intensity:

- None
- D0 Abnormally Dry
- D1 Moderate Drought
- D2 Severe Drought
- D3 Extreme Drought
- D4 Exceptional Drought

The Drought Monitor focuses on broad-scale conditions. Local conditions may vary. For more information on the Drought Monitor, go to <https://droughtmonitor.unl.edu/About.aspx>

Author:

Brad Rippey
 U.S. Department of Agriculture

