

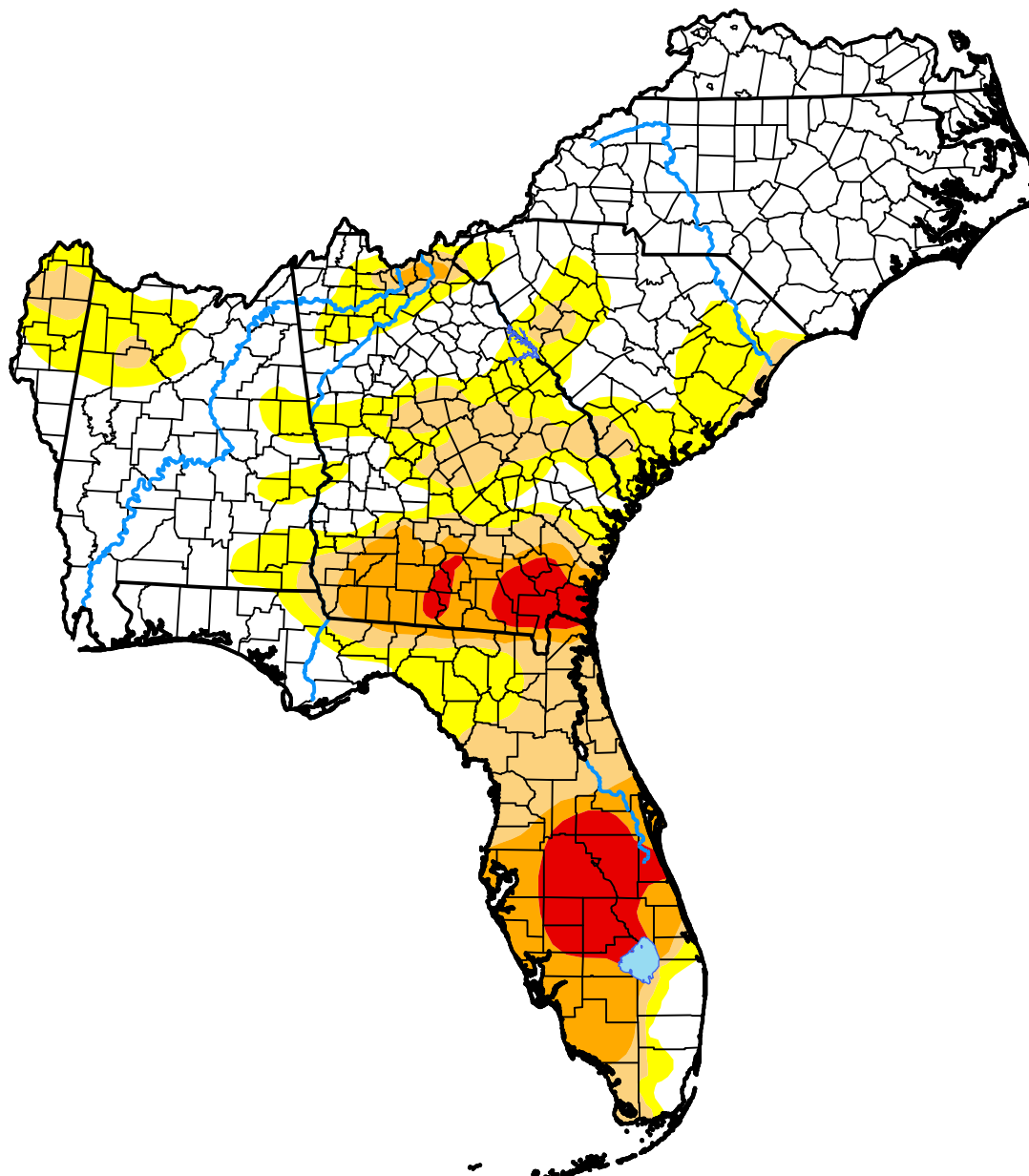
U.S. Drought Monitor Southeast RFC

May 23, 2017
(Released Thursday, May. 25, 2017)

Valid 8 a.m. EDT

Drought Conditions (Percent Area)

	None	D0-D4	D1-D4	D2-D4	D3-D4	D4
Current	53.60	46.40	26.42	13.71	5.01	0.00
Last Week <i>05-18-2017</i>	40.13	59.87	36.19	14.60	5.21	0.00
3 Months Ago <i>02-23-2017</i>	42.61	57.39	28.24	13.15	2.48	0.00
Start of Calendar Year <i>01-05-2017</i>	26.36	73.64	38.99	20.89	9.16	0.00
Start of Water Year <i>09-29-2016</i>	56.39	43.61	23.46	11.80	4.04	0.16
One Year Ago <i>05-26-2016</i>	79.68	20.32	7.55	0.00	0.00	0.00



Intensity:



The Drought Monitor focuses on broad-scale conditions. Local conditions may vary. For more information on the Drought Monitor, go to <https://droughtmonitor.unl.edu/About.aspx>

Author:

Brad Rippey
U.S. Department of Agriculture



droughtmonitor.unl.edu