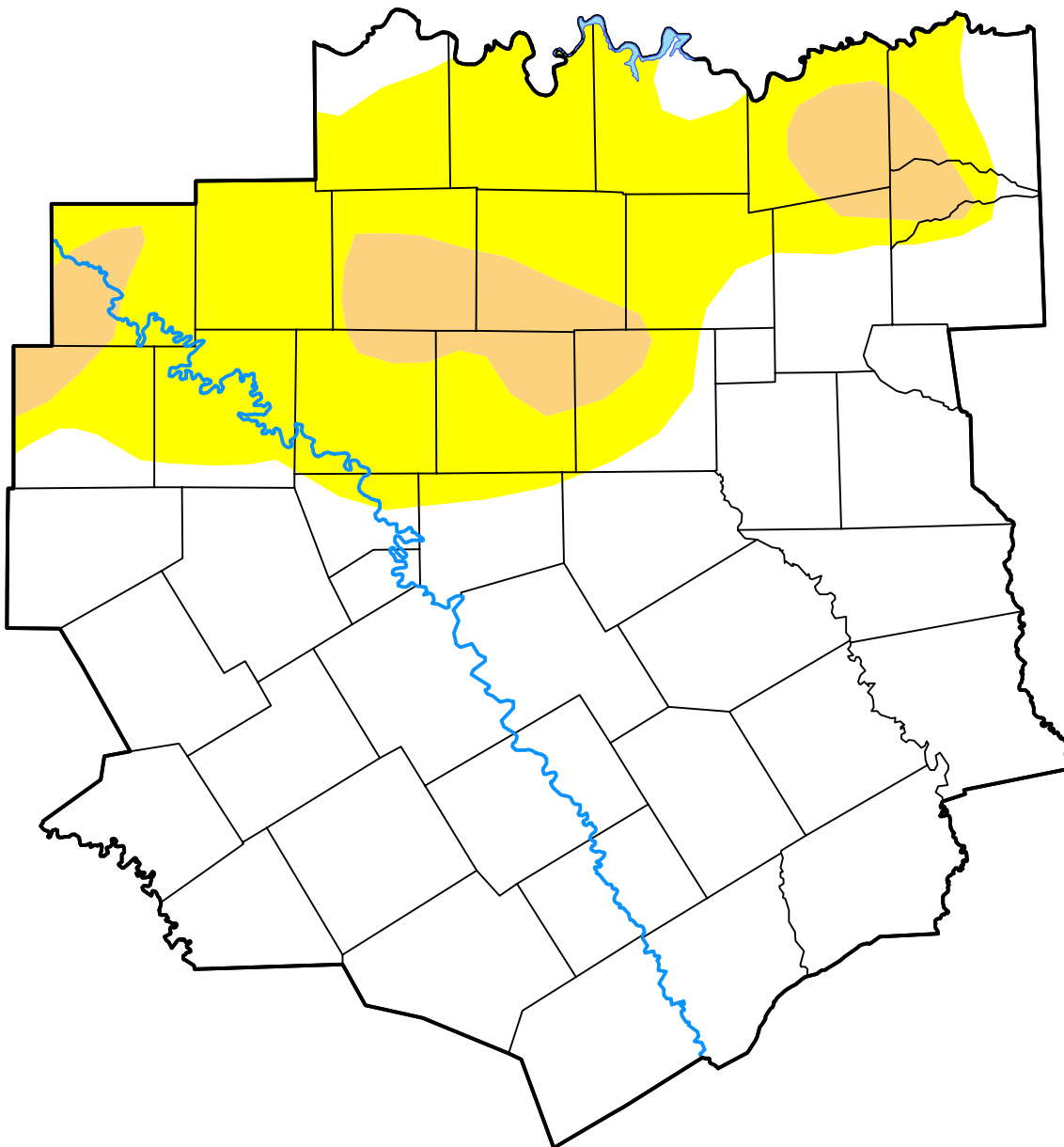


U.S. Drought Monitor

Fort Worth/Dallas, TX WFO

May 23, 2017
 (Released Thursday, May. 25, 2017)
 Valid 8 a.m. EDT



Drought Conditions (Percent Area)

	None	D0-D4	D1-D4	D2-D4	D3-D4	D4
Current	67.24	32.76	7.46	0.00	0.00	0.00
Last Week <i>05-18-2017</i>	58.36	41.64	9.37	0.91	0.00	0.00
3 Months Ago <i>02-23-2017</i>	89.91	10.09	6.36	4.02	0.00	0.00
Start of Calendar Year <i>01-05-2017</i>	58.11	41.89	14.07	5.65	0.26	0.00
Start of Water Year <i>09-29-2016</i>	91.59	8.41	0.76	0.00	0.00	0.00
One Year Ago <i>05-26-2016</i>	100.00	0.00	0.00	0.00	0.00	0.00

Intensity:

- None
- D0 Abnormally Dry
- D1 Moderate Drought
- D2 Severe Drought
- D3 Extreme Drought
- D4 Exceptional Drought

The Drought Monitor focuses on broad-scale conditions. Local conditions may vary. For more information on the Drought Monitor, go to <https://droughtmonitor.unl.edu/About.aspx>

Author:

Brad Rippey
 U.S. Department of Agriculture



droughtmonitor.unl.edu