

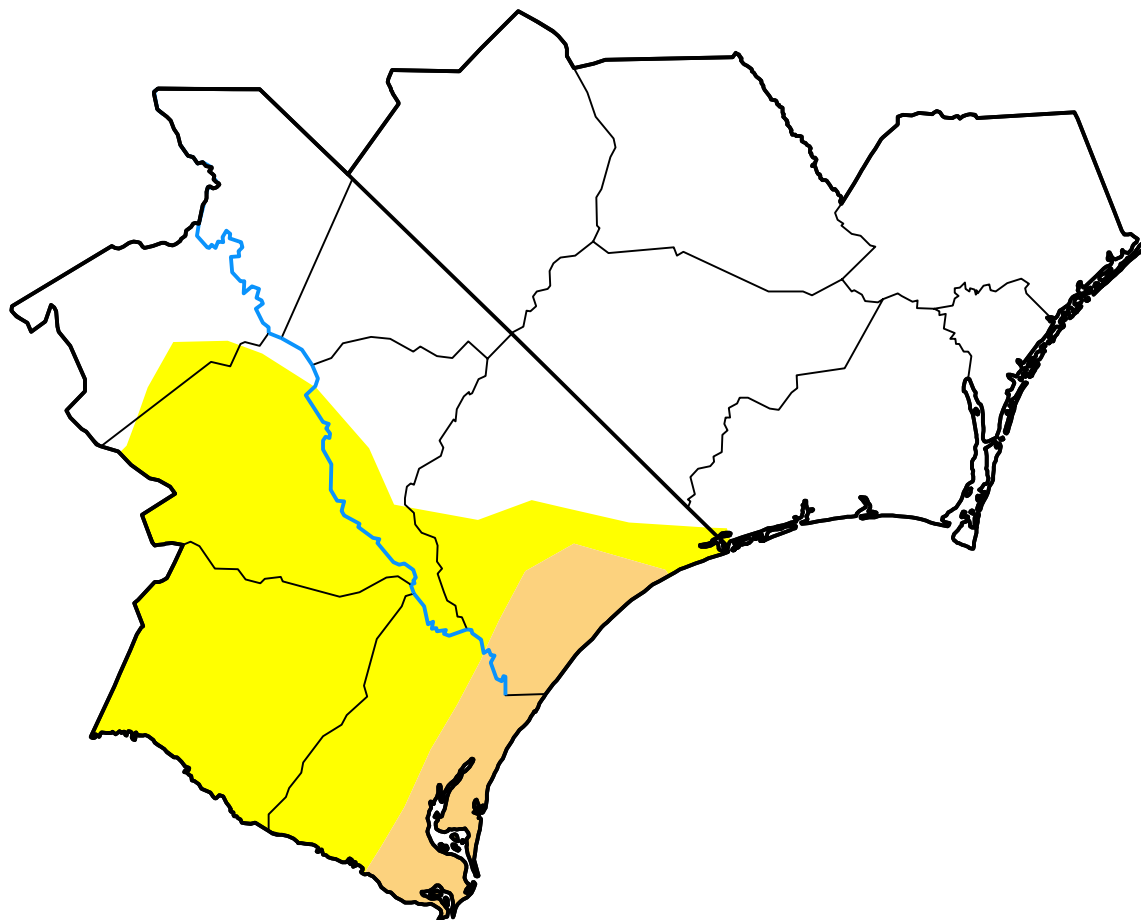
U.S. Drought Monitor Wilmington, NC WFO

May 23, 2017
(Released Thursday, May. 25, 2017)

Valid 8 a.m. EDT

Drought Conditions (Percent Area)

	None	D0-D4	D1-D4	D2-D4	D3-D4	D4
Current	67.18	32.82	5.81	0.00	0.00	0.00
Last Week <i>05-18-2017</i>	67.18	32.82	6.47	0.00	0.00	0.00
3 Months Ago <i>02-23-2017</i>	35.22	64.78	0.00	0.00	0.00	0.00
Start of Calendar Year <i>01-05-2017</i>	100.00	0.00	0.00	0.00	0.00	0.00
Start of Water Year <i>09-29-2016</i>	100.00	0.00	0.00	0.00	0.00	0.00
One Year Ago <i>05-26-2016</i>	100.00	0.00	0.00	0.00	0.00	0.00



Intensity:

- None
- D0 Abnormally Dry
- D1 Moderate Drought
- D2 Severe Drought
- D3 Extreme Drought
- D4 Exceptional Drought

The Drought Monitor focuses on broad-scale conditions. Local conditions may vary. For more information on the Drought Monitor, go to <https://droughtmonitor.unl.edu/About.aspx>

Author:

Brad Rippey
U.S. Department of Agriculture

