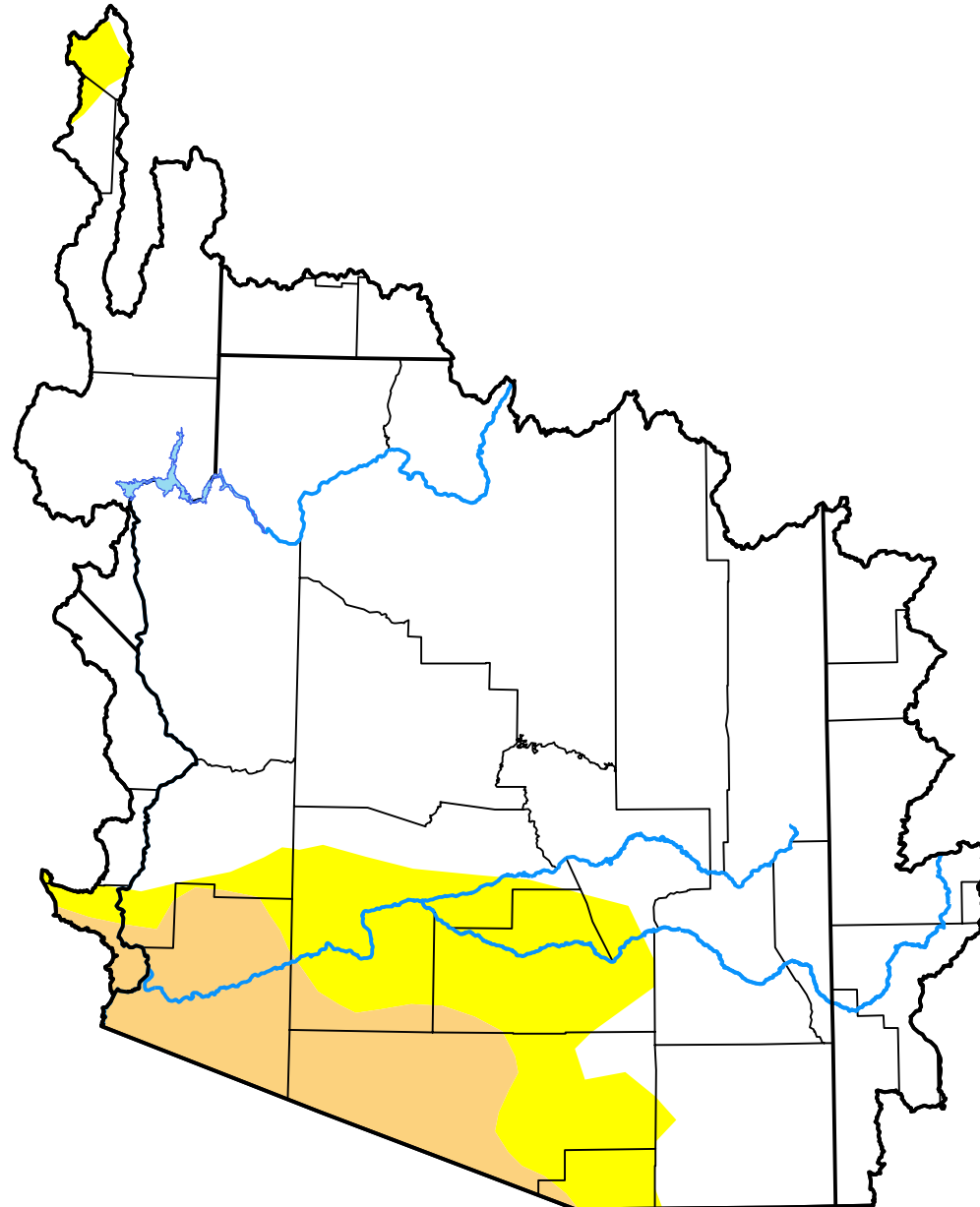


U.S. Drought Monitor

Lower Colorado Watershed

August 29, 2017
 (Released Thursday, Aug. 31, 2017)
 Valid 8 a.m. EDT



Drought Conditions (Percent Area)

	None	D0	D1	D2	D3	D4
Current	78.61	12.30	9.09	0.00	0.00	0.00
Last Week <i>08-24-2017</i>	78.61	12.30	9.09	0.00	0.00	0.00
3 Months Ago <i>06-01-2017</i>	54.86	19.13	25.69	0.33	0.00	0.00
Start of Calendar Year <i>01-05-2017</i>	45.82	32.32	18.60	3.25	0.00	0.00
Start of Water Year <i>09-29-2016</i>	11.79	50.37	33.46	4.38	0.00	0.00
One Year Ago <i>09-01-2016</i>	4.67	28.78	63.84	2.71	0.00	0.00

Intensity:

- None
- D0 Abnormally Dry
- D1 Moderate Drought
- D2 Severe Drought
- D3 Extreme Drought
- D4 Exceptional Drought

The Drought Monitor focuses on broad-scale conditions. Local conditions may vary. For more information on the Drought Monitor, go to <https://droughtmonitor.unl.edu/About.aspx>

Author:

Chris Fenimore
 NCEI/NESDIS/NOAA

