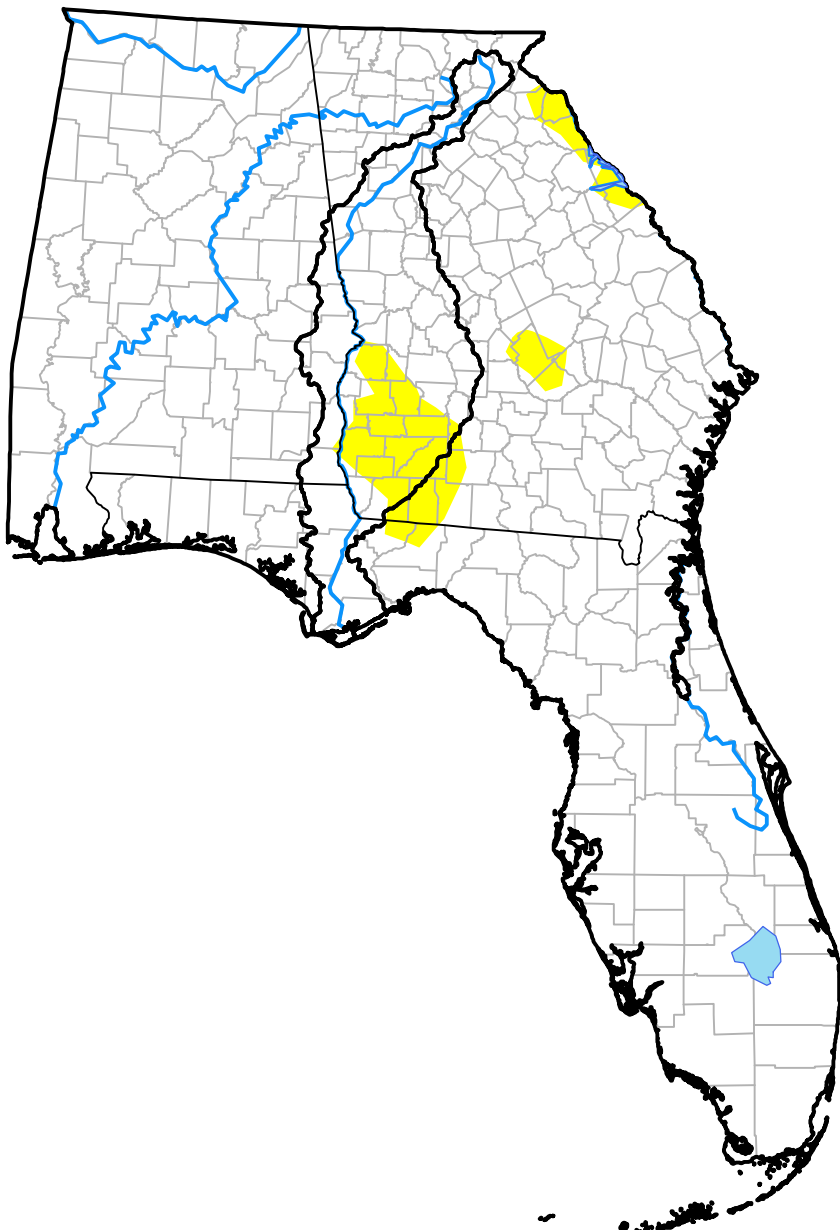


Upper Basin RDEWS and Surrounding Areas

(Released Thursday, Aug. 31, 2017)

10:08 a.m. EDT



Drought Conditions (Percent Area)

	None	D0-D4	D1-D4	D2-D4	D3-D4	D4
Current	95.52	4.48	0.00	0.00	0.00	0.00
Last Week <i>08-24-2017</i>	100.00	0.00	0.00	0.00	0.00	0.00
3 Months Ago <i>06-01-2017</i>	49.11	50.89	36.06	19.09	5.08	0.00
Start of Calendar Year <i>01-05-2017</i>	15.88	84.12	49.04	28.90	14.01	0.00
Start of Water Year <i>09-29-2016</i>	49.22	50.78	30.74	17.71	7.14	0.56
One Year Ago <i>09-01-2016</i>	51.47	48.53	25.80	12.89	2.32	0.00

Intensity:

- None
- D0 Abnormally Dry
- D1 Moderate Drought
- D2 Severe Drought
- D3 Extreme Drought
- D4 Exceptional Drought

The Drought Monitor focuses on broad-scale conditions. Local conditions may vary. For more information on the Drought Monitor, go to <https://droughtmonitor.unl.edu/About.aspx>

Author:

Chris Fenimore
NCEI/NESDIS/NOAA

