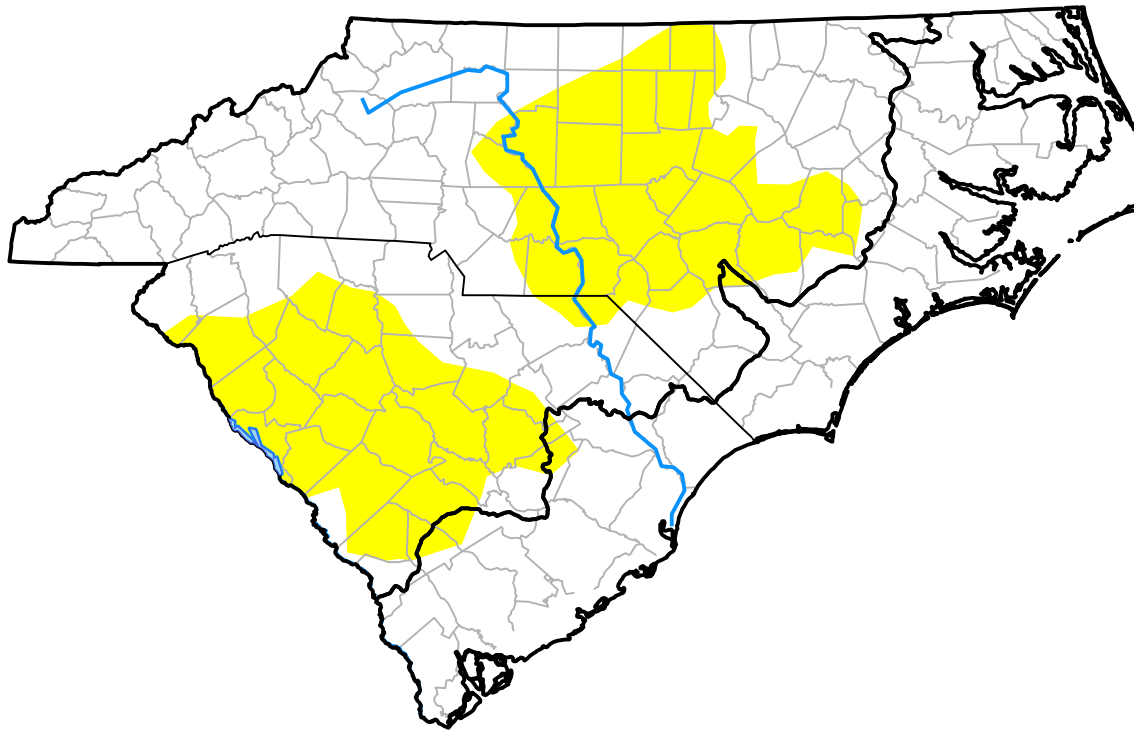


# U.S. Drought Monitor

## Coastal Carolinas RDEWS

**August 29, 2017**  
 (Released Thursday, Aug. 31, 2017)  
 Valid 8 a.m. EDT



*Drought Conditions (Percent Area)*

	None	D0	D1	D2	D3	D4
<b>Current</b>	100.00	0.00	0.00	0.00	0.00	0.00
<b>Last Week</b> <i>08-24-2017</i>	97.89	2.11	0.00	0.00	0.00	0.00
<b>3 Months Ago</b> <i>06-01-2017</i>	61.97	33.24	4.79	0.00	0.00	0.00
<b>Start of Calendar Year</b> <i>01-05-2017</i>	74.47	25.53	0.00	0.00	0.00	0.00
<b>Start of Water Year</b> <i>09-29-2016</i>	95.73	4.27	0.00	0.00	0.00	0.00
<b>One Year Ago</b> <i>09-01-2016</i>	85.36	10.37	4.28	0.00	0.00	0.00

***Intensity:***



*The Drought Monitor focuses on broad-scale conditions. Local conditions may vary. For more information on the Drought Monitor, go to <https://droughtmonitor.unl.edu/About.aspx>*

***Author:***

Chris Fenimore  
 NCEI/NESDIS/NOAA

