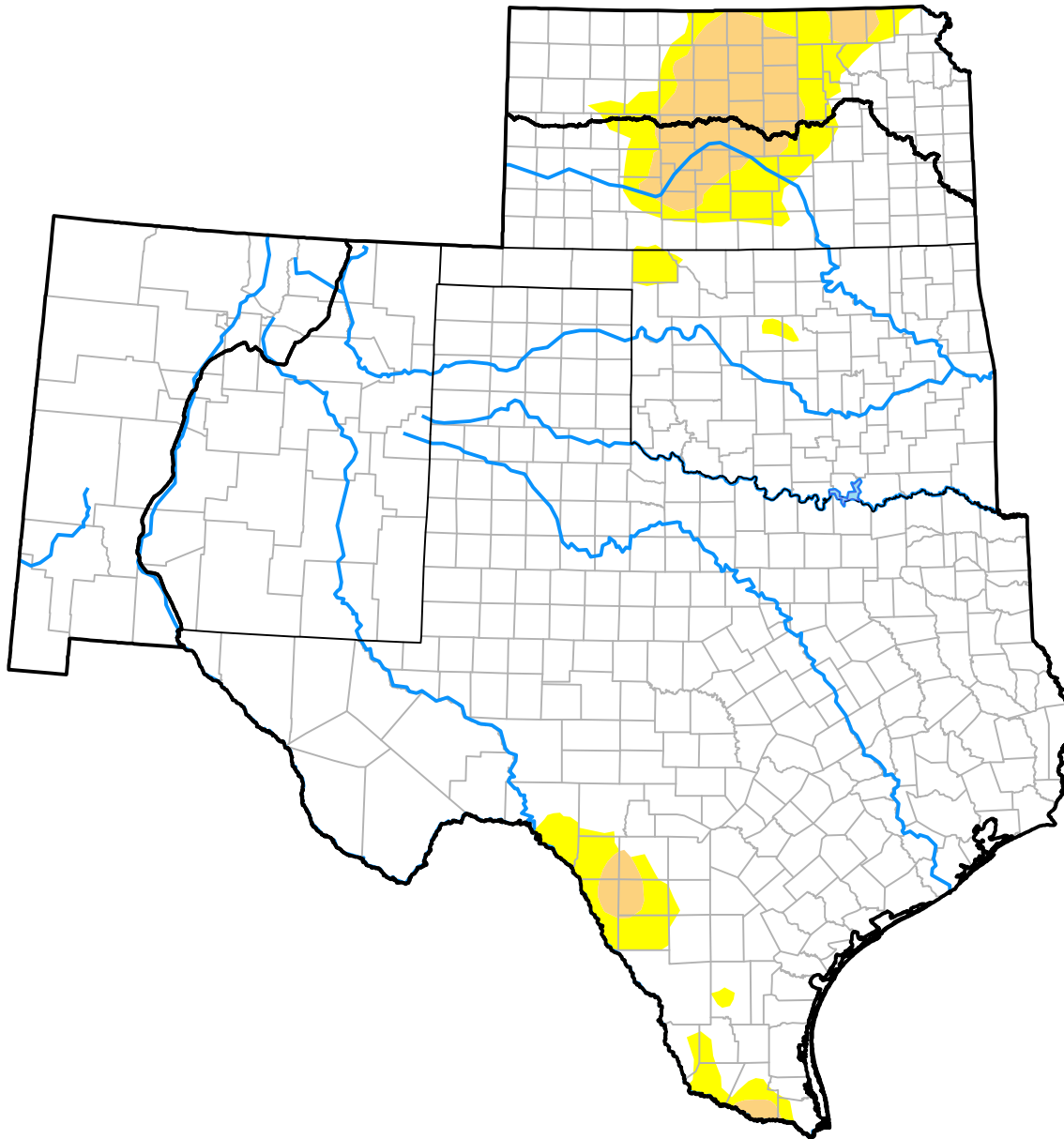


# U.S. Drought Monitor

## Southern Plains RDEWS

**August 29, 2017**  
 (Released Thursday, Aug. 31, 2017)  
 Valid 8 a.m. EDT



*Drought Conditions (Percent Area)*

	None	D0-D4	D1-D4	D2-D4	D3-D4	D4
<b>Current</b>	97.43	2.57	0.51	0.00	0.00	0.00
<b>Last Week</b> <i>08-24-2017</i>	91.52	8.48	1.43	0.00	0.00	0.00
<b>3 Months Ago</b> <i>06-01-2017</i>	72.39	27.61	3.89	0.00	0.00	0.00
<b>Start of Calendar Year</b> <i>01-05-2017</i>	65.81	34.19	17.53	9.68	0.87	0.00
<b>Start of Water Year</b> <i>09-29-2016</i>	78.11	21.89	4.30	0.47	0.00	0.00
<b>One Year Ago</b> <i>09-01-2016</i>	63.96	36.04	9.83	0.14	0.00	0.00

***Intensity:***

- None
- D0 Abnormally Dry
- D1 Moderate Drought
- D2 Severe Drought
- D3 Extreme Drought
- D4 Exceptional Drought

*The Drought Monitor focuses on broad-scale conditions. Local conditions may vary. For more information on the Drought Monitor, go to <https://droughtmonitor.unl.edu/About.aspx>*

***Author:***

Chris Fenimore  
 NCEI/NESDIS/NOAA

