

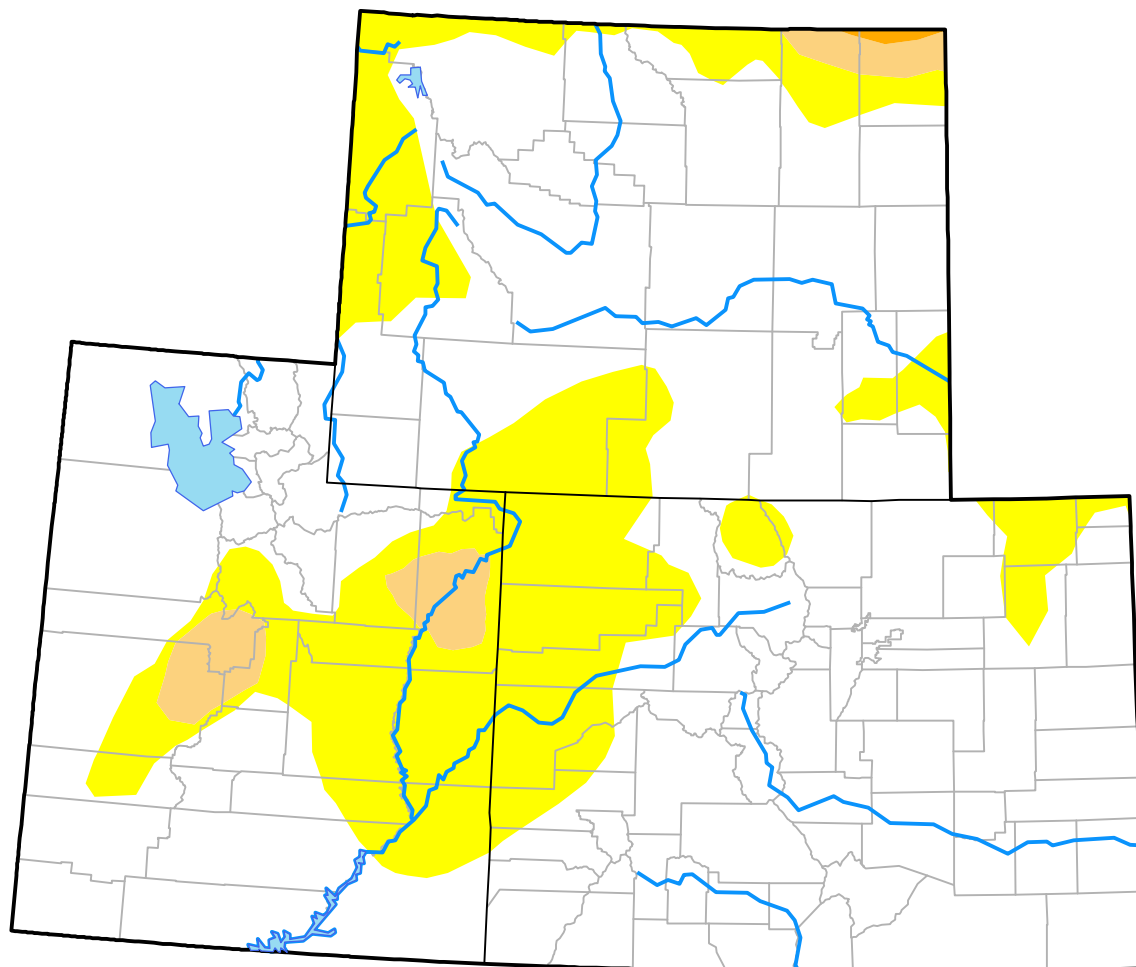
# Upper Colorado River Basin RDEWS

(Released Thursday, Aug. 31, 2017)

Valid 8 a.m. EDT

Drought Conditions (Percent Area)

	None	D0	D1	D2	D3	D4
<b>Current</b>	74.98	22.37	2.53	0.12	0.00	0.00
<b>Last Week</b> <i>08-24-2017</i>	79.54	17.82	2.53	0.12	0.00	0.00
<b>3 Months Ago</b> <i>06-01-2017</i>	90.52	9.44	0.04	0.00	0.00	0.00
<b>Start of Calendar Year</b> <i>01-05-2017</i>	46.62	30.64	21.46	1.29	0.00	0.00
<b>Start of Water Year</b> <i>09-29-2016</i>	52.16	34.42	9.29	4.12	0.00	0.00
<b>One Year Ago</b> <i>09-01-2016</i>	54.99	32.91	9.01	2.19	0.90	0.00



**Intensity:**

- None
- D0 Abnormally Dry
- D1 Moderate Drought
- D2 Severe Drought
- D3 Extreme Drought
- D4 Exceptional Drought

The Drought Monitor focuses on broad-scale conditions. Local conditions may vary. For more information on the Drought Monitor, go to <https://droughtmonitor.unl.edu/About.aspx>

**Author:**

Chris Fenimore  
NCEI/NESDIS/NOAA

